

KNEEDLEPOINTAUCCHERRE

KNEEDLEPOINTAUCCHERRE

# JIM THOMPSON

SPRING 2020

KF

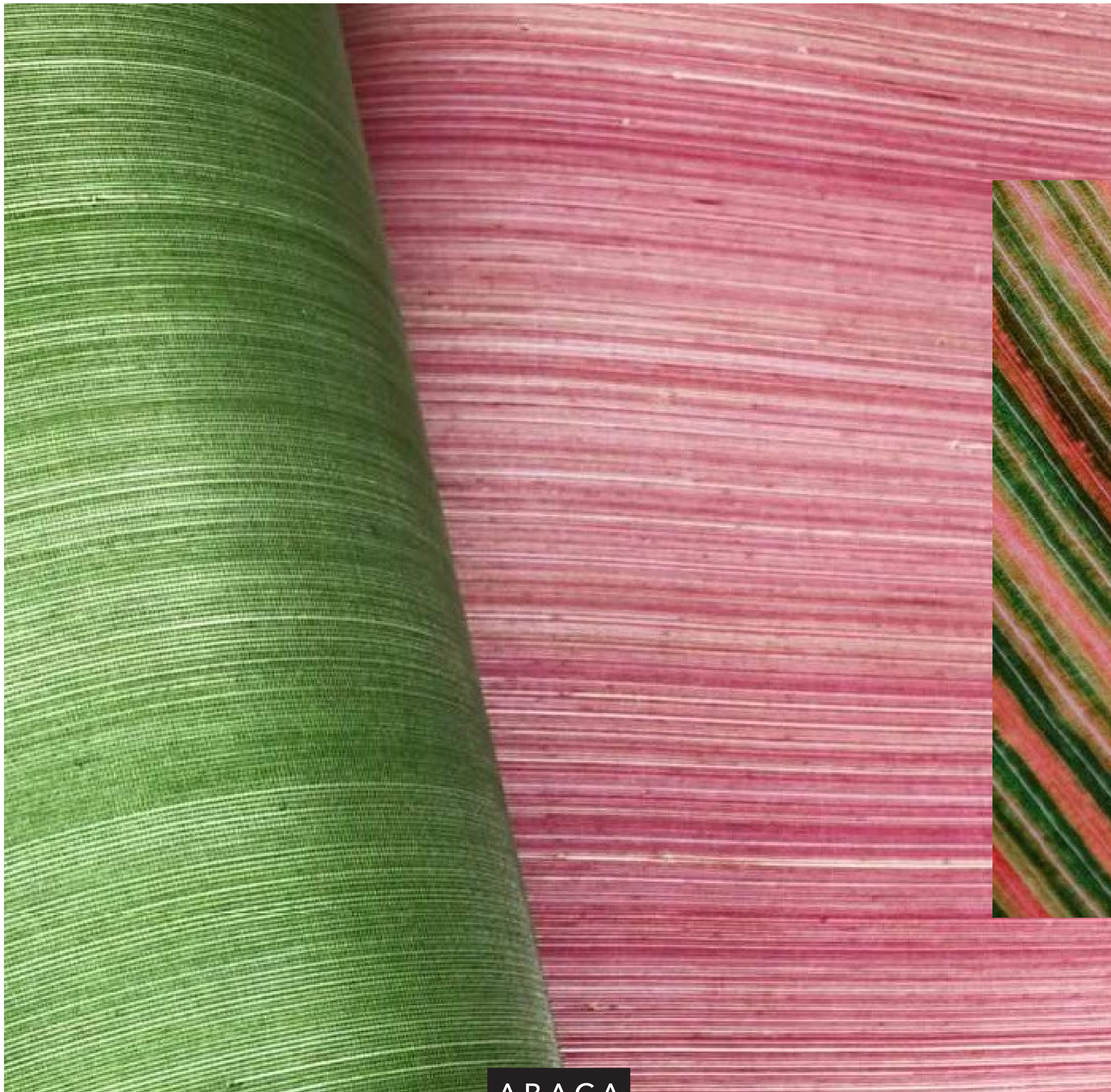




ABACA COLLECTION







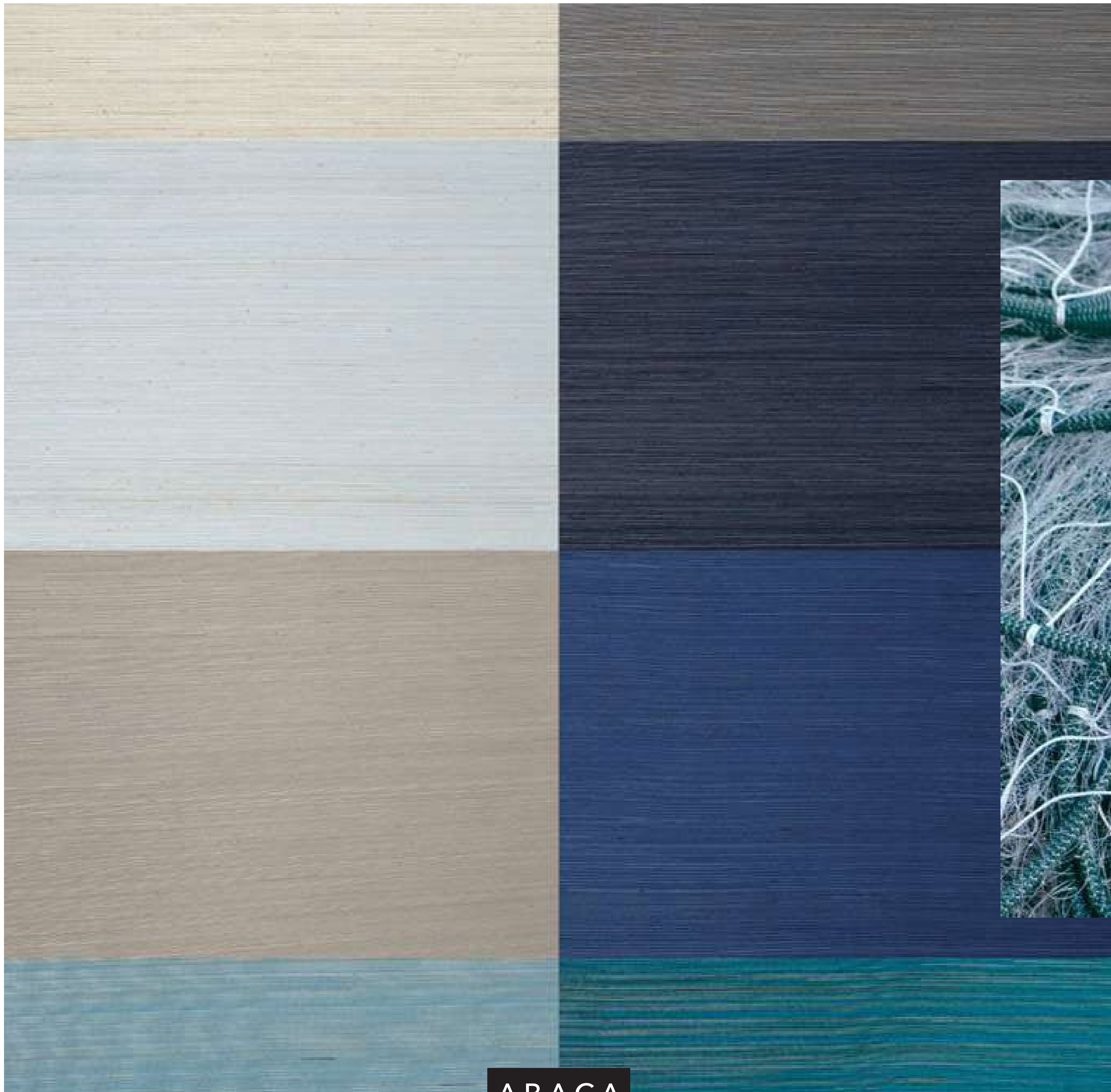
ABACA





ABACA





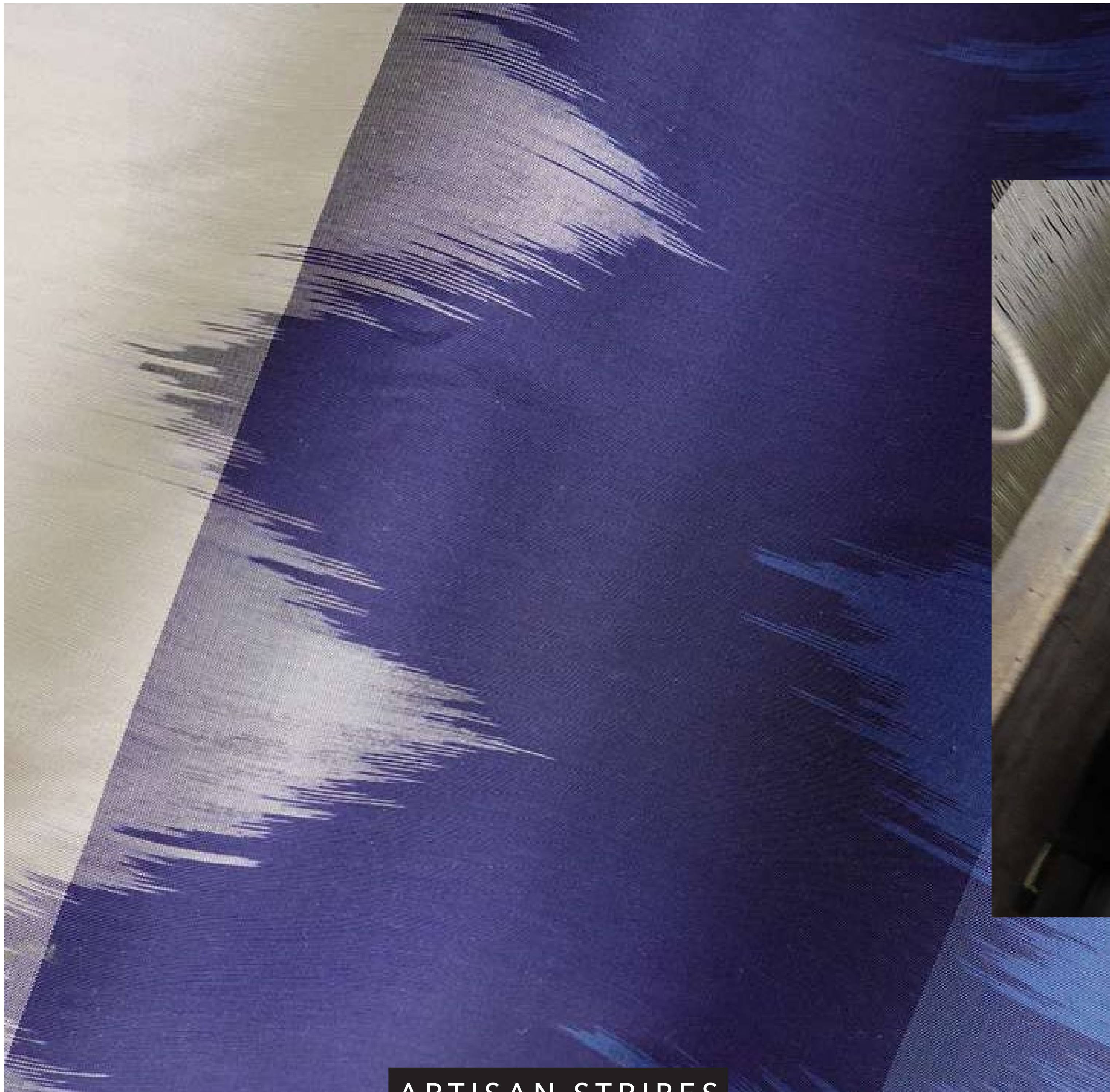
ABACA





ARTISAN STRIPES  
COLLECTION





ARTISAN STRIPES

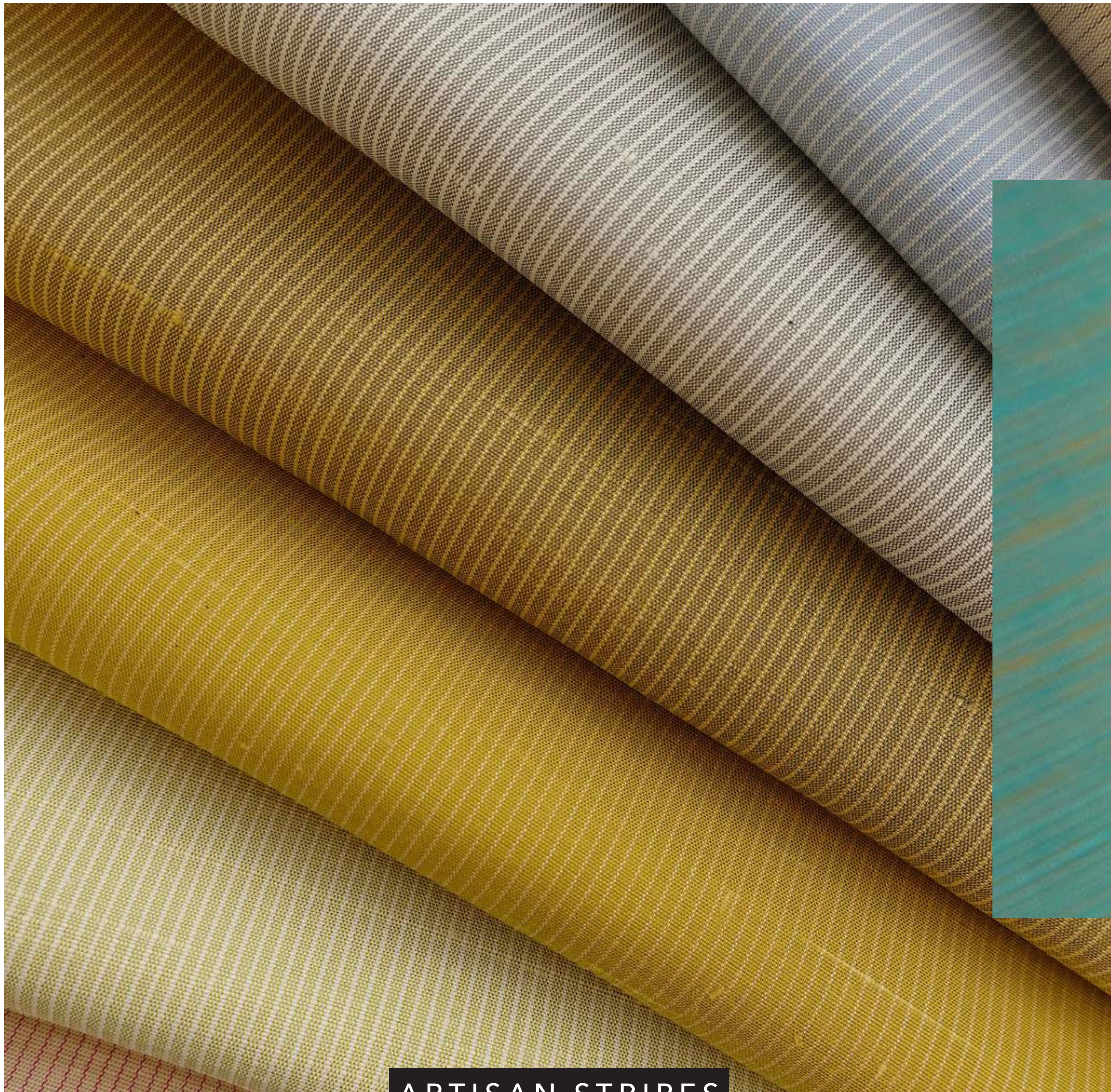






ARTISAN STRIPES





ARTISAN STRIPES





ISLA COLLECTION





ISLA





ISLA





ISLA



# JAZZ AGE COLLECTION



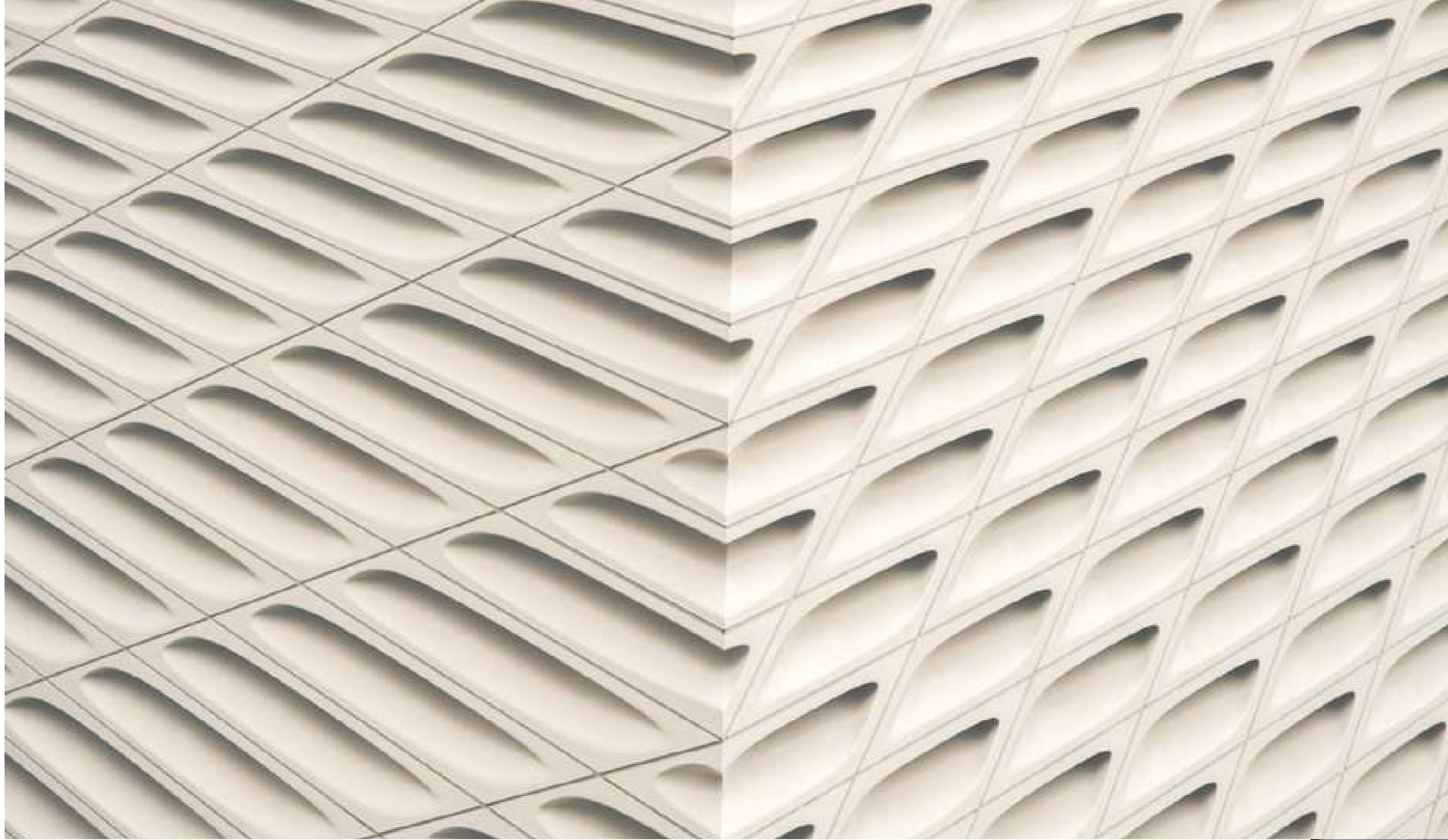




JAZZ AGE







JAZZ AGE





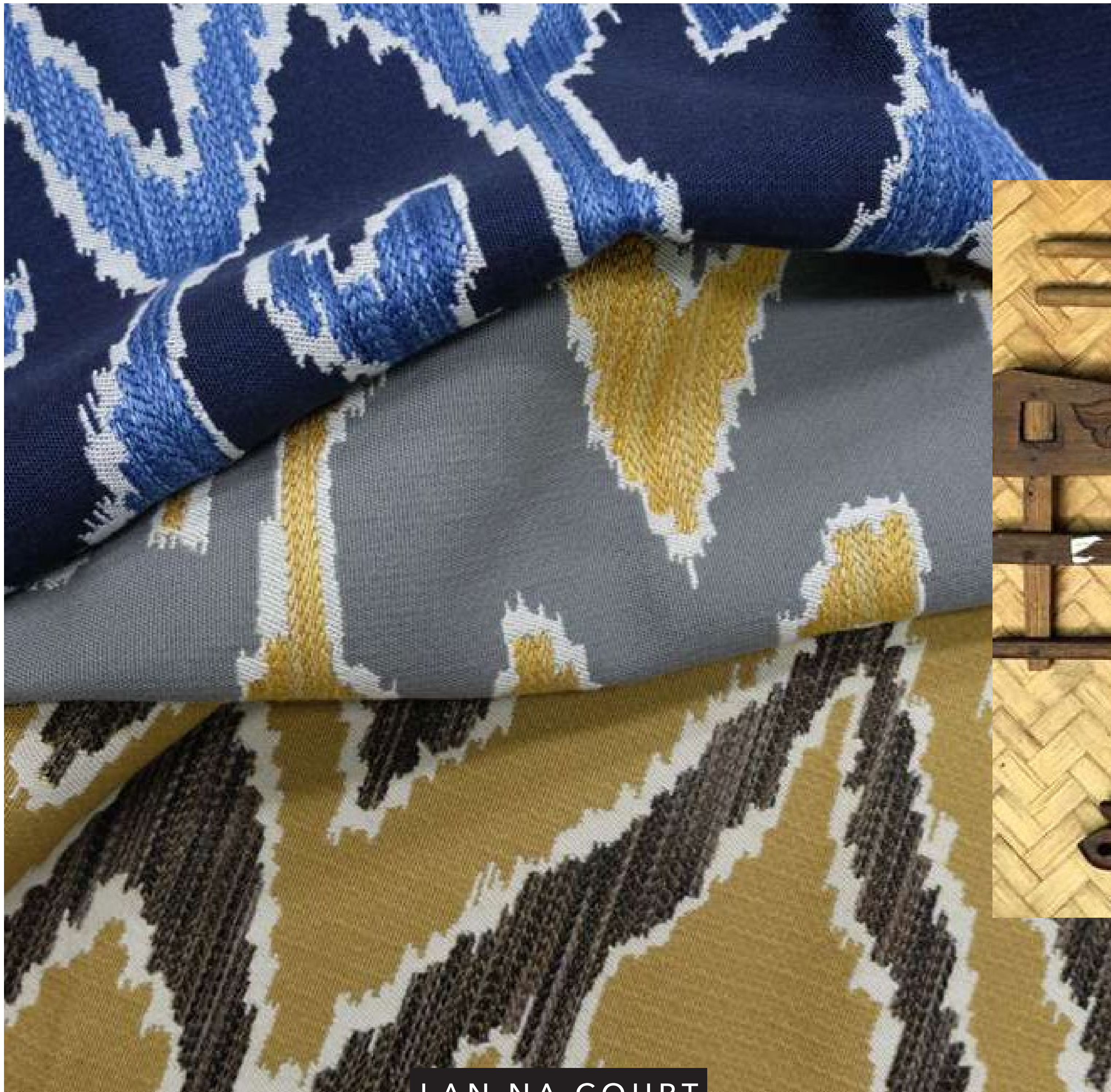
JAZZ AGE





LANNA COURT COLLECTION





LAN NA COURT





LAN NA COURT





LAN NA COURT

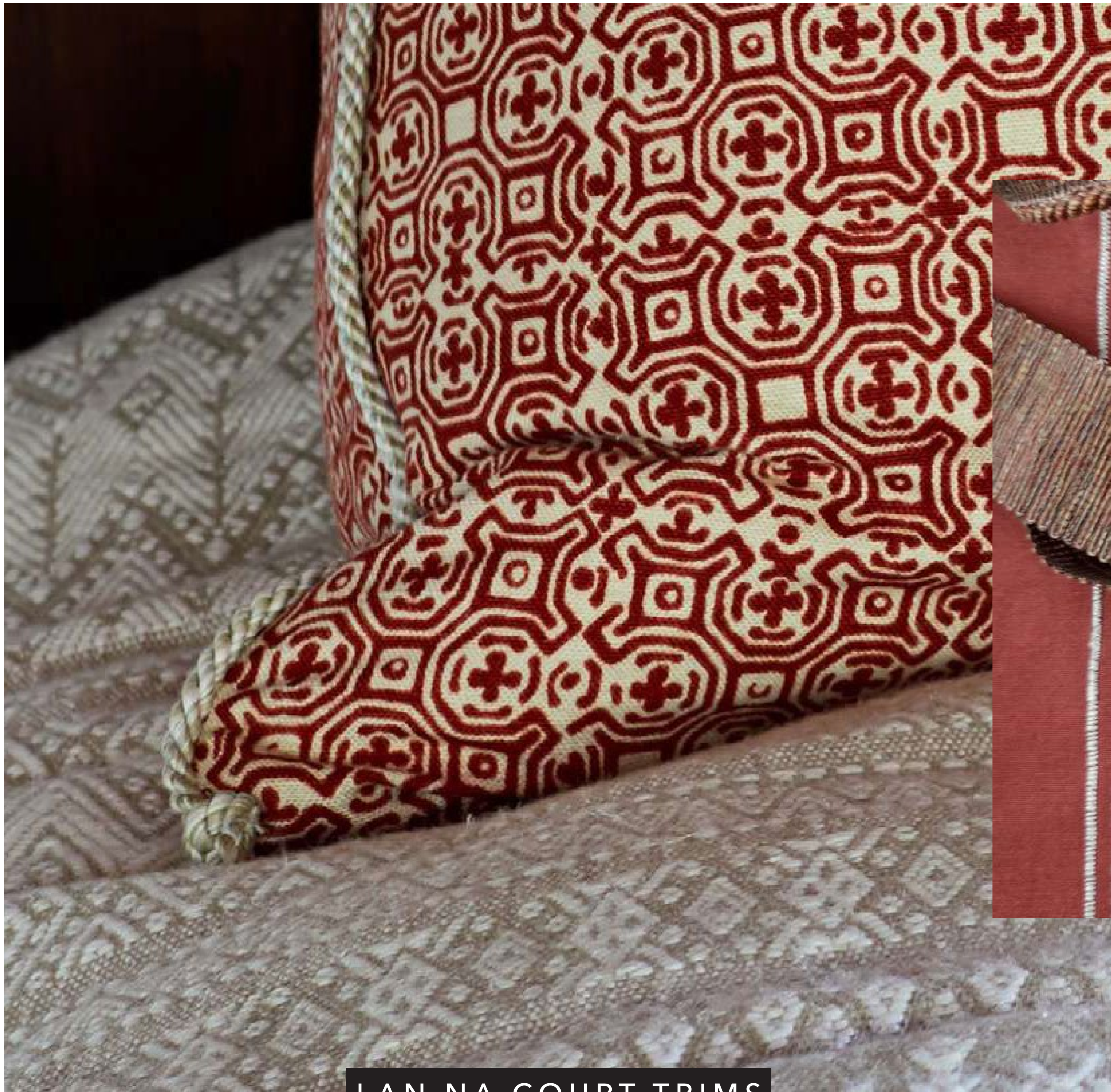




A collage of textile materials. On the left, there is a pile of soft, tan-colored wool. In the center, there are several skeins of vibrant blue yarn. To the right, there is a close-up of a tassel made of blue and green threads, hanging from a dark wooden surface. The background is a mix of these colors and textures, with a diagonal brown line crossing through the center.

# TRIM COLLECTIONS





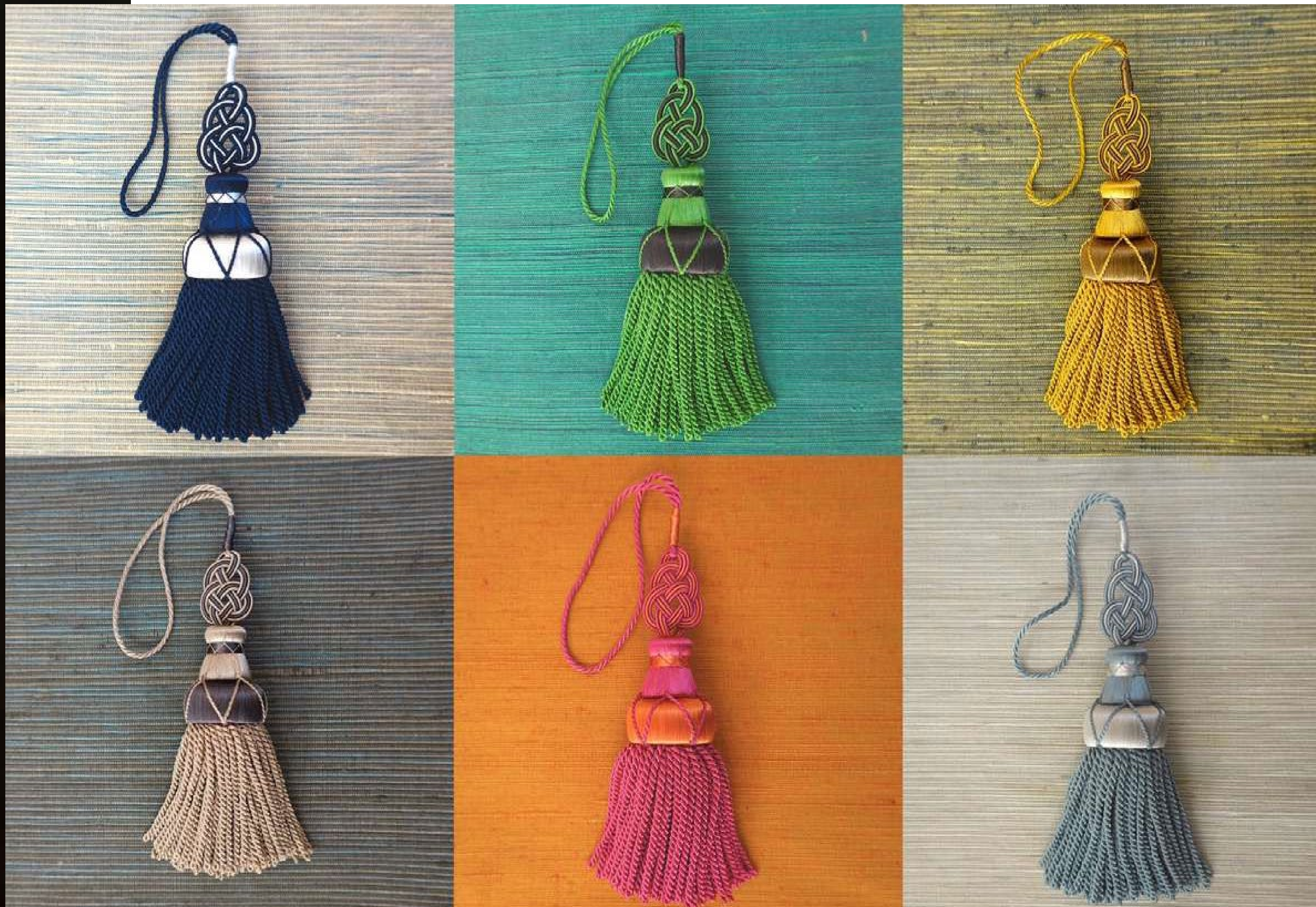
LAN NA COURT TRIMS





LAN NA COURT TRIMS





ORNAMENTA TRIMS





ORNAMENTA TRIMS



KF

# JIM THOMPSON

SPRING 2020

NOW AVAILABLE

KNIFE DIFER FAUCHÈRE