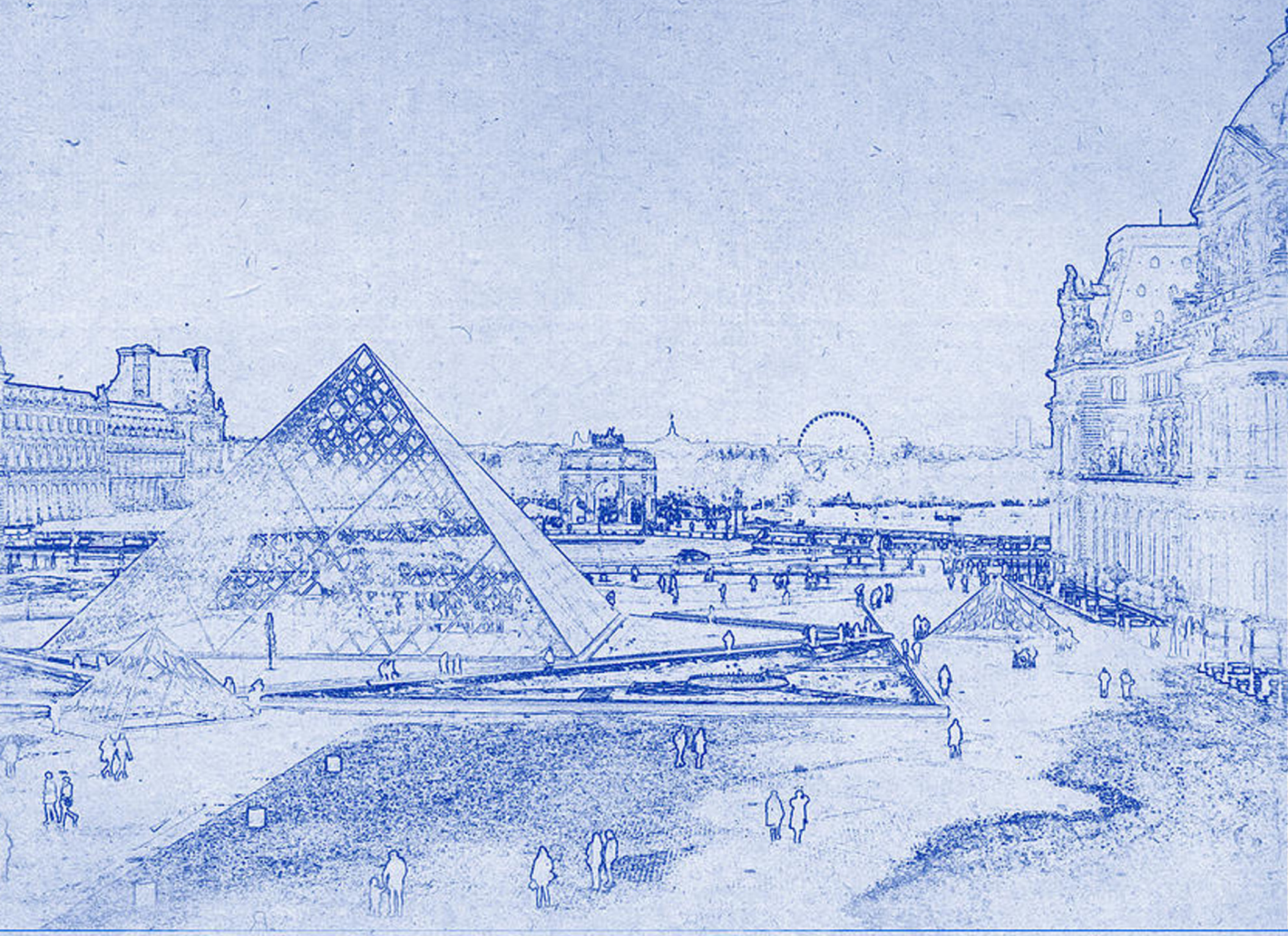


ROCKY  
LAFLEUR

CALVIN  
MA

STUDENT  
COMPETITION





DESIGN  
BOARD





# DESIGN CONCEPT

To provide a holistic space for Rocky LaFleur to stay in during his frequent business trips, the Parisian apartment includes both a gathering space for showcasing Kneedler Fauchère furniture and entertaining guests as well as a space for spiritual practice.

## 6TH FLOOR

The 6th floor felt to be the better candidate as an entertaining and showcase space because of its uniform level and double height ceiling. The great volume is filled in by the parties and engagements with artists and clients. To assist in containing an otherwise cavernous space and in creating an intimate environment, the dark Farrow and Ball Mahogany paint dresses the walls with a subtle warm violet. This low chroma paint was selected so that most colors could be paired with it to grant Rocky ease of changing and displaying new Kneedler Fauchère furniture and color stories. Also, the contrast with the bright sky outside frames in beautiful Paris while embracing this space as its own. Gauze-like drapery further frames the windows, allowing light filtering but not privacy as it is a space for entertainment rather than for personal privacy. A table is centered in front of the large window for Rocky to have coffee or to dine with guests while overlooking the Parisian scenery. Additional chairs could be drawn up to accommodate more friends.

The ceiling was the initial element designed. Rather than working around the ceiling beams, an asymmetric geometry design floats right under, playing off the geometric motif of the Louvre that can be seen right out the window. Because the ceiling is not entirely straight and symmetrical, the asymmetry helps to offset that while creating an element of interest. This concept runs down the wall as a mirror installation that frames the bar. The bar and closet built-in are embedded into the protruding wall as you enter the space so that Rocky may offer to hang coats and a drink as guests enter the space.

With an Aude Herlédan painting commanding attention across the room, eyes are immediately pulled through the entire space to cause people to absorb the atmosphere. Any large painting, art piece, or even textile arranged as tapestry can be showcased here. The large curved sofa allows guests to enjoy the view outward, but it also creates an organized conversation arrangement with the bench sofa arrangement. For the bench sofa, a rich gradation fabric was selected and pairs with the wall color. The long bench also allows for plenty of comfortable seating throughout. Calm yellow fabrics complement the paint and sofa fabric, and uplighting generates a relaxed mood for evening entertainment. A pedestal among other surfaces including the built-in surface behind the sofa serve to display Kneedler Fauchère-represented sculptures and lamps.

Ample closet space allows Rocky to store textiles, furniture, artwork, and other pieces to swap out with the pieces on the “floor” as this space also acts as a Kneedler Fauchère showroom. Being both the showroom and entertainment space allows people to see and touch the materials and realize the beauty and quality of the products. Most pieces could be changed and reupholstered, including the wallpapered door panels of the bar. Bare walls could be dressed with more artwork to exhibit established and up-and-coming artists.

Ultimately, the 6th floor is a blend of design styles and cultural inspiration to symbolize the diversity of Paris as a design hub. It also harmonizes with Rocky’s character as a social animal who is always expanding his circle. Hints of Swedish, Japanese, English, African, French, Belgian, romantic, modern, and rustic are currently curated and placed in a harmonious blend. A duality of luxury and comfort, complexity and simplicity, curvaceous and linear forms, woods and metals, stones and fabrics, dark and light, and symmetry and asymmetry were all highly considered. Overall, this grand space remains open as a place of social connection.

## 8TH FLOOR

With soft light from the satin glass and the skylight, the 8th floor seemed to desire maintaining silence. On this floor which feels like a hidden space, Rocky’s spirituality could be fostered and nourished. Orchestrated to be a room for him to practice spirituality or consult with spiritual leaders, this floor possesses a much simpler and pure design in terms of forms and materials to promote focus and peace.

Instead of the Japanese soaking tub, a stone reflection well emerged in its place. Whether standing over or sitting beside the well, Rocky can be immersed in peace as the water reflects the soul of the world. A tall mirror next to this well produces his spiritual companion in his sacred journey. With doors open to outside, sounds of the world ground him as he creates a divine connection. Gauze-like sheers again treat the windows to soften light and produce a natural heavenly glow instead of fully blocking out the light.

Antique French limestone tiles sweep the floor, while pearwood and plaster sheath the walls and the ceiling. The use of few and ancient materials is meant to connect the spirit with the past and with the earth. Bold forms and shapes are avoided so to maintain a lasting calm, while glowing light design aim to produce an ethereal atmosphere. A low table on the south with two stools as well as the bistro seating on the terrace grant meeting areas with a spiritual leader. On the terrace, the shrubbery in the planter is replaced with stones to further establish an area of zen. The shower was removed, with the bathroom becoming a powder room, and cabinetry and book shelving fill in the wall.

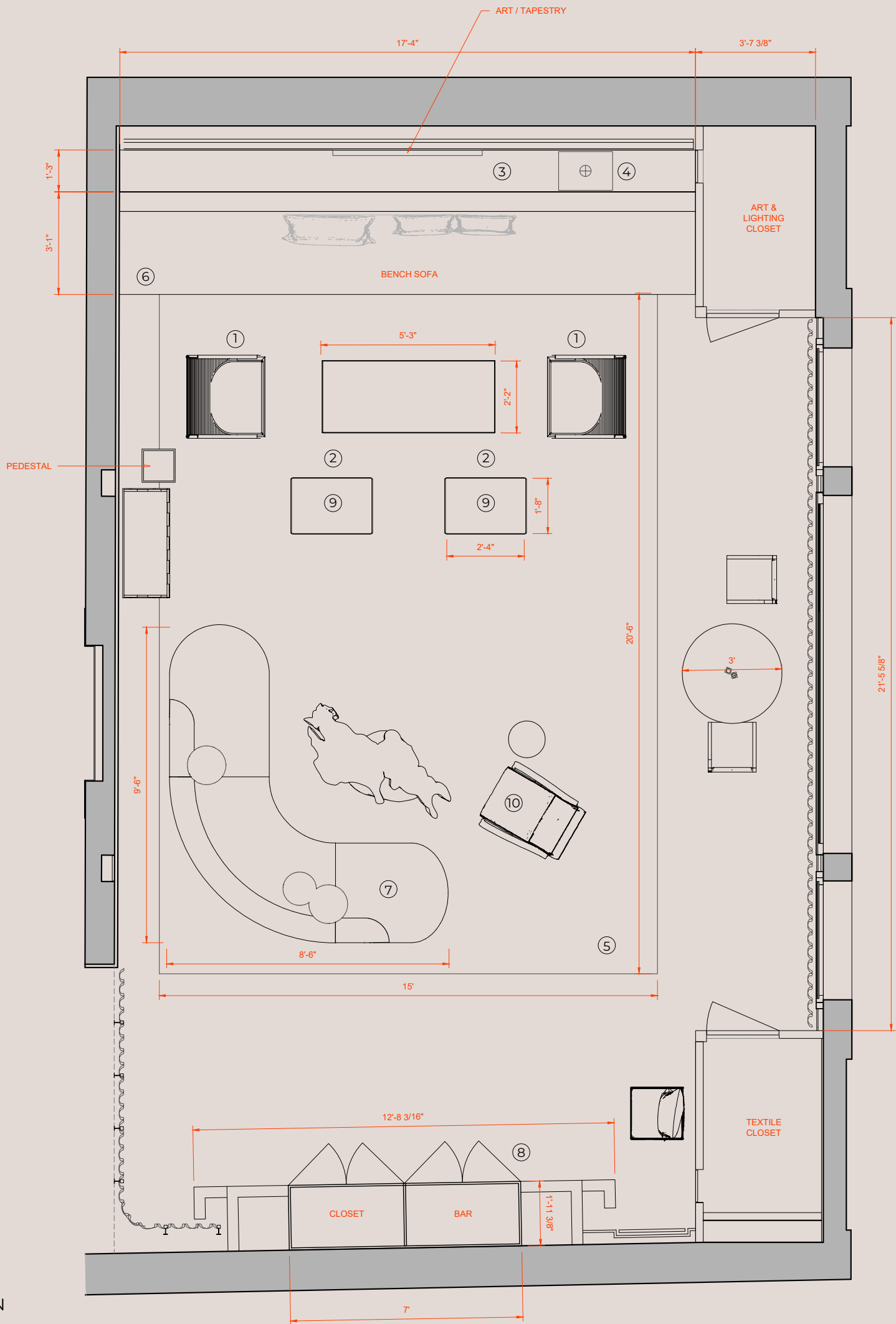
As a haven from constant meetings and entertaining, this is also a relaxation and reading space for Rocky in addition to a reflection area. With a minimalist approach of simplicity yet without lacking elegance, the 8th floor in a sense serves as the antithesis to the 6th floor, but still conveys a connection.







6TH FLOOR PLAN



- |                          |   |                        |   |                          |  |                          |   |                      |   |
|--------------------------|---|------------------------|---|--------------------------|--|--------------------------|---|----------------------|---|
| 1                        |  | 2                      |  | 3                        |  | 4                        |  | 5                    |  |
| Ironies - Turku Wide     |   | Ironies - Bonn Ottoman |   | Herledan - Precious Land |  | Galerie May - Stonn Lamp |   | Nobilis - Makalu Rug |   |
| 6                        |  | 7                      |  | 8                        |  | 9                        |  | 10                   |  |
| Zak+Fox - Tail of Heaven |   | Dedar - Nimbus         |   | Nobilis - Naiades        |  | Dedar - Tiger Silk       |   | Zak+Fox - Takara     |   |



NORTH ELEVATION



SOUTH ELEVATION



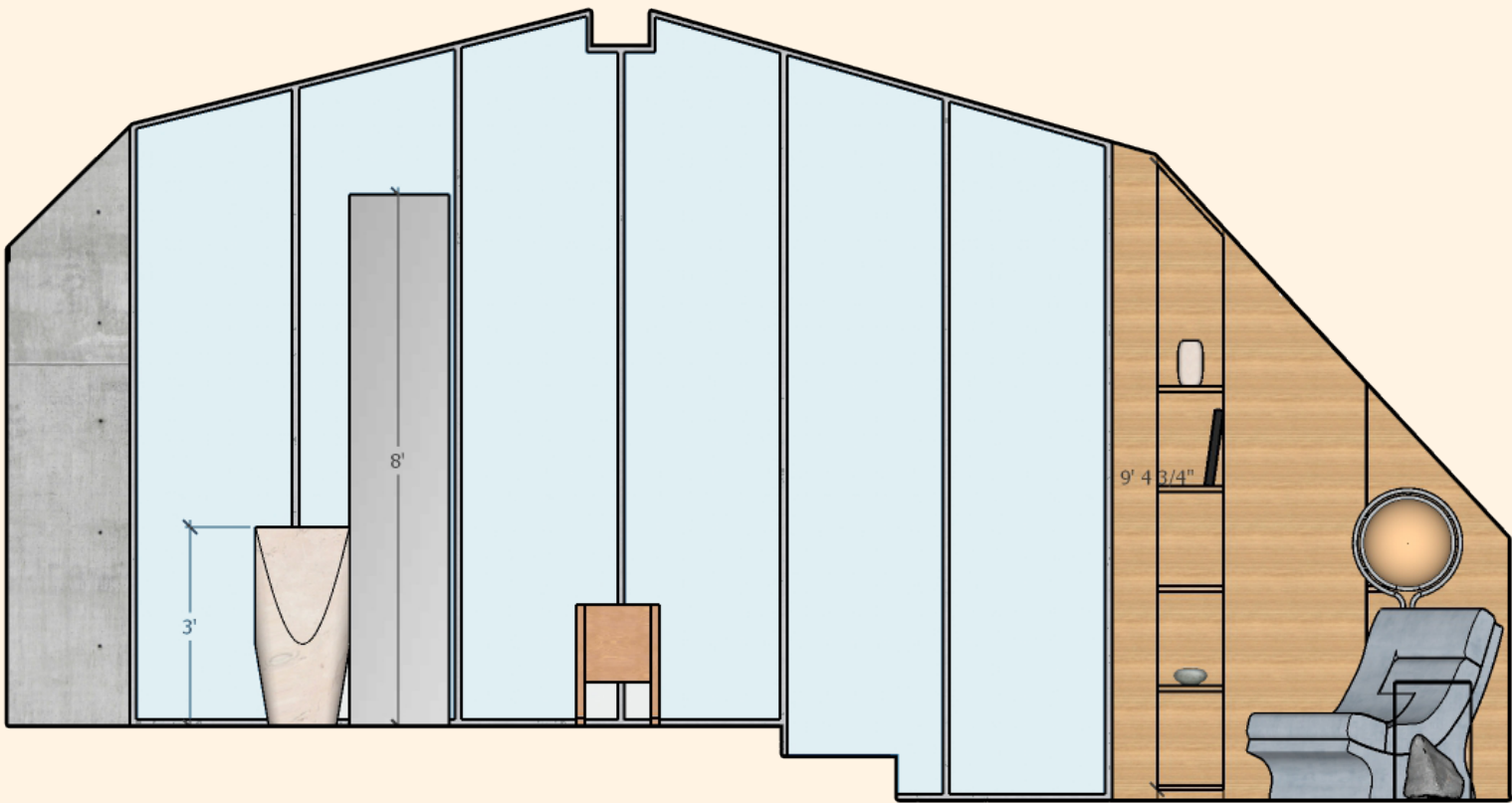
CEILING PLAN











NORTH ELEVATION





THANK  
YOU

