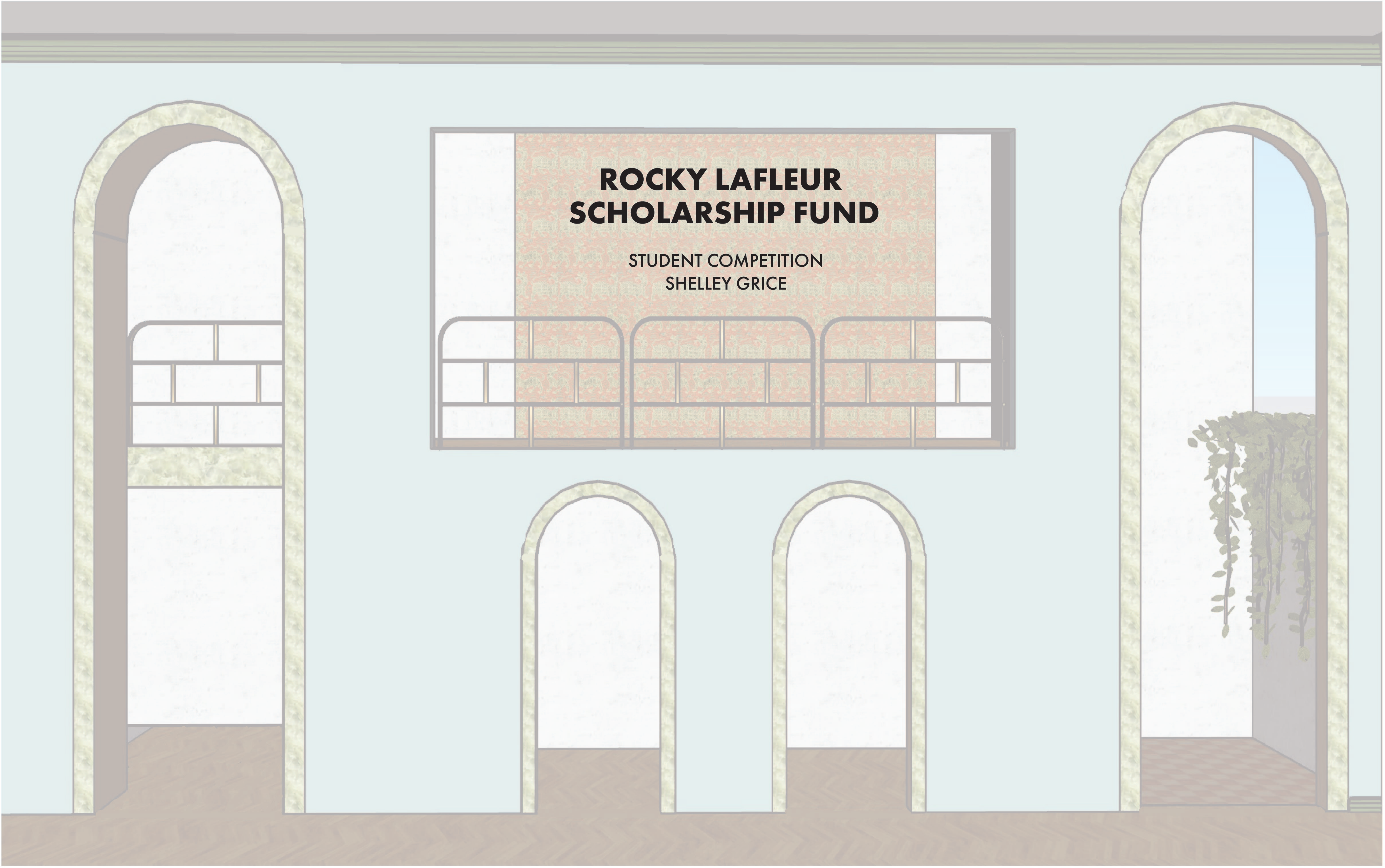


**ROCKY LAFLEUR
SCHOLARSHIP FUND**

STUDENT COMPETITION
SHELLEY GRICE



CONCEPT STATEMENT

My design concept for Rocky Lafleur's Paris apartment was to make the space feel as though you stepped into a Wes Anderson movie. Wes Anderson films have a very distinct Art Deco style set design. One of the most important qualities of his work is the balance he achieves in every frame. Most of the still shots you see from his films are almost perfectly symmetrical. Centered on my mood board is a still shot from Wes Anderson's film *Moonrise Kingdom*. My mood board directly inspired the symmetry, style and colors found in my design. My mood board includes my favorite fabrics from Kneeder Fauchere's various suppliers that fit with my design concept. The mood board helped guide my design choices as I redesigned the floor plans and furnished the space. First, I will walk you through my sixth and eighth floor plans and how the different spaces relate to each other. I will then explain how my Wes Anderson inspired design impacted my decision making with both the layout and furnishings of Rocky Lafleur's apartment.

My goal was to create a playful and unique space used for entertaining guests and hosting parties. I wanted to keep the fifth floor private for Rocky to live out his day to day while visiting Paris. In order to transform the sixth floor into the ultimate entertainment space, I wanted the interior to flow into the large courtyard. To accomplish this, I moved the guest room up to the seventh floor and carved out two three-foot wide archways to connect the entertainment room to the courtyard. As you walk through the archway towards the courtyard, there is another small lounge area that displays Rocky's wine collection. I took out the two sets of doors leading out to the courtyard and put in glass bifold doors that allow the room to merge with the outdoor space.

Moving up to the eighth floor, I created an environment suitable for both entertainment and relaxation. I turned this space into a bar room that includes a jacuzzi with a stunning view of Paris. I wanted the bar room to be luxurious yet still feel comfortable and inviting. The existing jacuzzi was replaced with a bigger jacuzzi that includes a backlit waterfall feature. Placed across from the jacuzzi is a hanging bubble chair to add some playfulness to the room. The sliding glass doors that open up to the balcony were replaced with wider glass sliders. I wanted less mullions obstructing the view. The glass doors slide out of the door frame into a pocket wall allowing the inside space to flow out to the balcony. I also decided to remove the shower. Guests can use the full bath I added on the seventh floor to shower and change after soaking in the jacuzzi. The powder was moved across the room opening up space for a lounge chair next to the jacuzzi. This seating area is a place where Rocky can lounge post jacuzzi or for people to sit and chat when he is hosting. I also removed the glass floor looking down onto the seventh floor to maintain privacy in the guest suit.

This new layout makes for a perfect evening of socializing and entertainment. I envision Rocky Lafleur hosting large dinner parties out in the lush courtyard. After dinner guests can flow in and out of the entertainment room for games of pool or choose to sit in the lounge area with friends, all whilst enjoying the view of the Louve. The wine room is a centrally located lounge in between the entertainment room and courtyard. There is a large built in wine fridge that Rocky can access while hosting. The party can also be moved to upstairs where guests can enjoy a jacuzzi or a drink at the bar.

CONCEPT STATEMENT

To achieve a Wes Anderson inspired apartment I found it most important to use symmetry as the driving force behind my design. Starting with the sixth floor, I focused on creating interior architectural elements rooted in the Art Deco style. When opening up the sixth floor interior space to the courtyard, I chose to make two three-foot archways instead of one large opening to enhance the symmetry of this wall. On either side of the two small archways are two larger arches. Here I played with scale and created some drama in the space. The large arch on the right side of the wall has a custom two-story window that creates a view into the small courtyard where guests can step out for a phone call or a cigarette.

Moving up to the eighth floor, I decided to thread the architectural elements I created on the sixth floor throughout the eighth floor space. I wanted the bar to be on the center of the wall overlooking the Louve with two symmetrical arch doors on either side that lead out to the balcony. In order to make this work I turned the existing doors into windows and the existing windows into doors. These arch doors mimic the arches created on the sixth floor. The windows in the center of the bar slide open allowing access to the interior bar from the balcony. The balcony also has bar seating for people to enjoy the outside space while also conversing with people sitting at the bar inside.

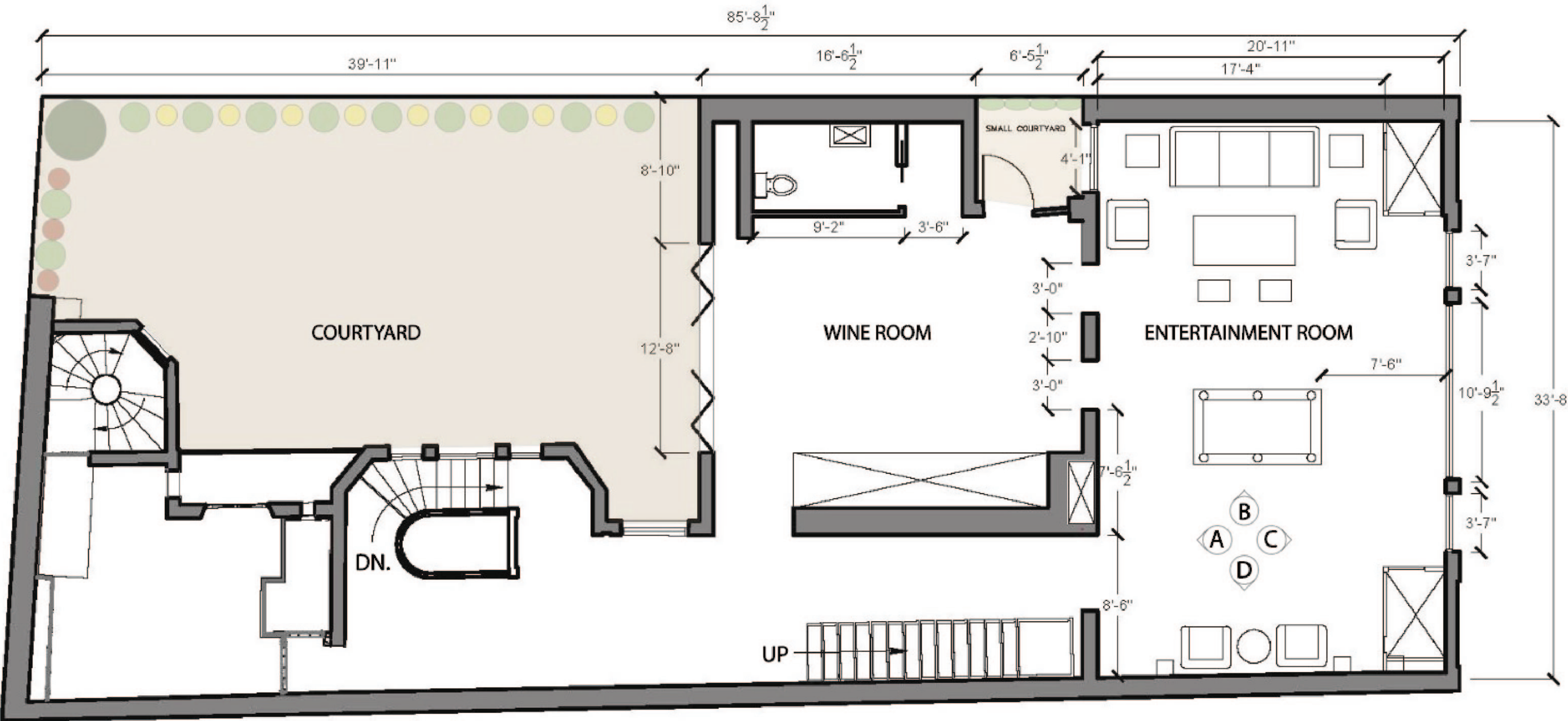
After I finalized the floor plans and had a clear vision of my design, I built a 3D model of the apartment and began the furnishing process. I used the patterned fabrics on my mood board to upholster wall panels that line the interior of both the sixth and eighth floor spaces. The color pallet at the bottom of my mood board was created using a color picker and extracting colors from the Moonrise Kingdom still shot. This color pallet helped me choose accent colors to pair with the fabrics I placed on my mood board. The powder blue walls, green trim, red wallpaper, and orange accents in my design came directly from my mood board color pallet. To highlight the architecture of the archways I lined them with jade marble. The bar island and back bar wall are also covered with jade marble slabs. There are LED lights placed at the top of the back bar wall as well as under the bar top to enhance the glamour of the stone. I created an FF&E schedule that lists all the fabrics and furnishings I chose to use from Kneeder Fauchere's suppliers.

After the remodel is complete this apartment will be the ultimate entertainment space. Showcasing a variety of Kneeder Fauchere's suppliers, this apartment will also be the perfect tool to display how this showroom and all its incredible suppliers can transform your living space into something remarkable.

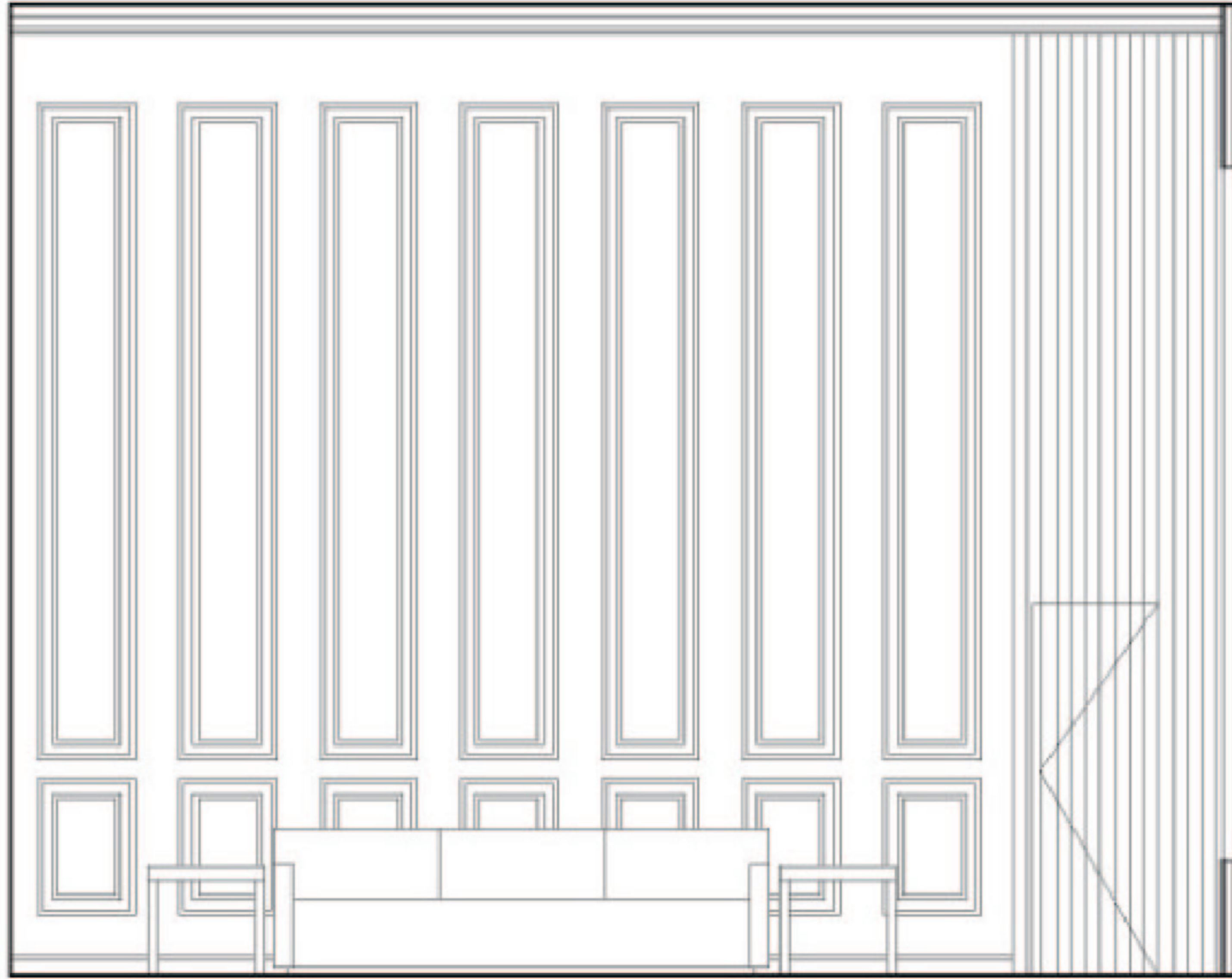
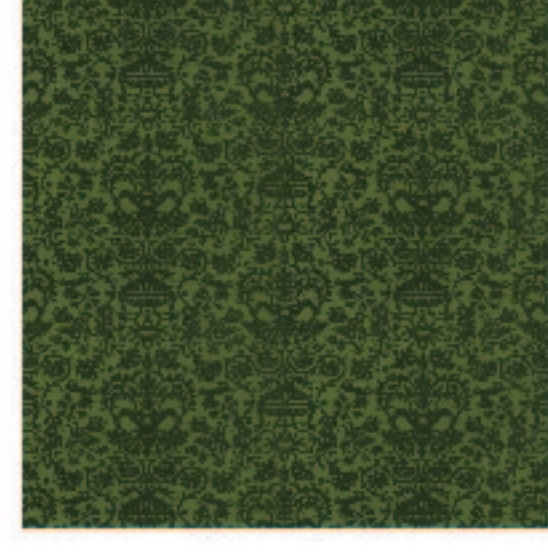
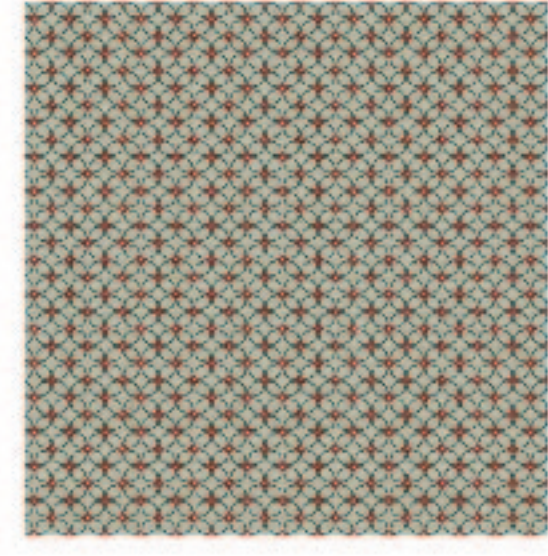
MOOD BOARD



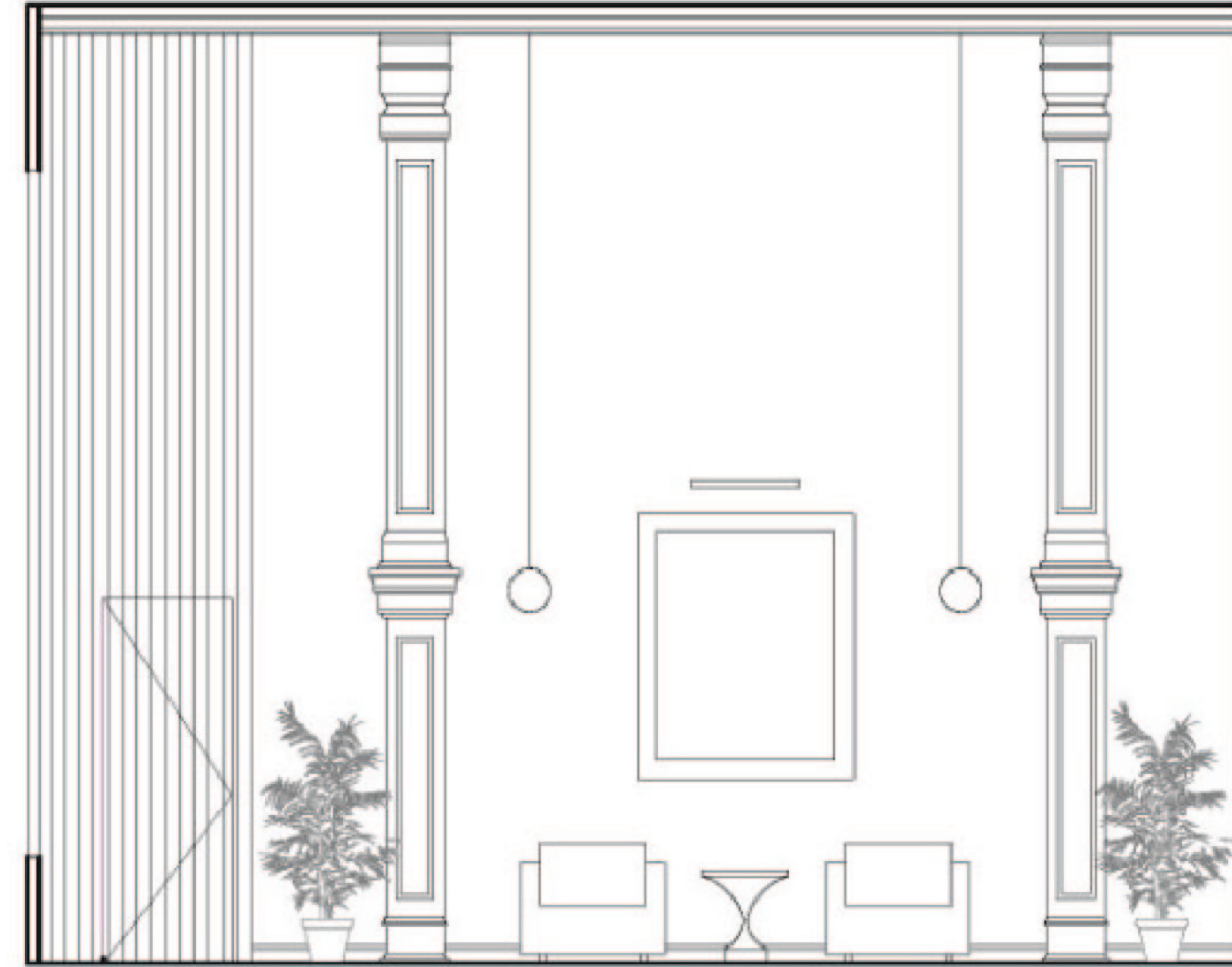
6TH FLOOR PLAN AND ELEVATIONS



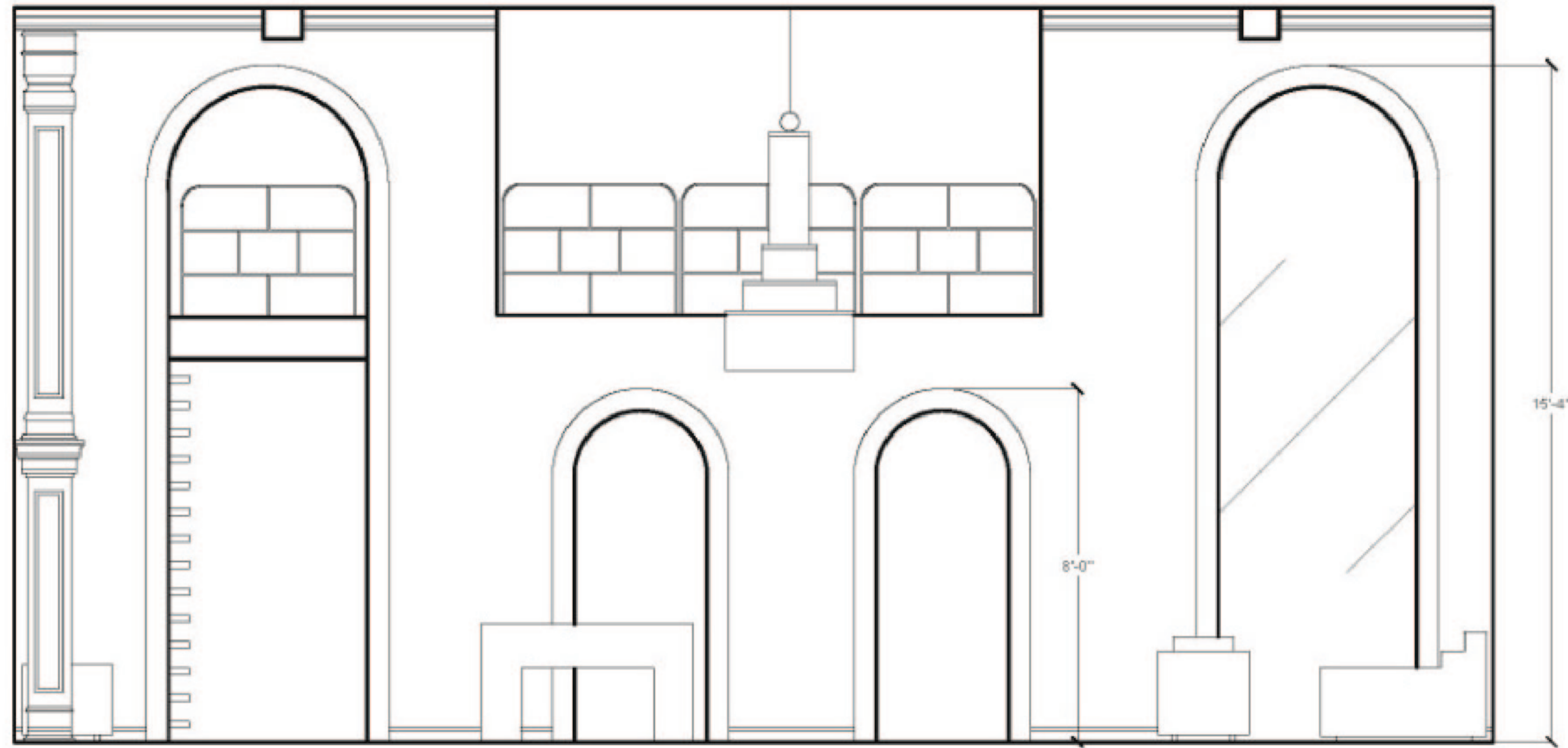
6TH FLOOR PLAN



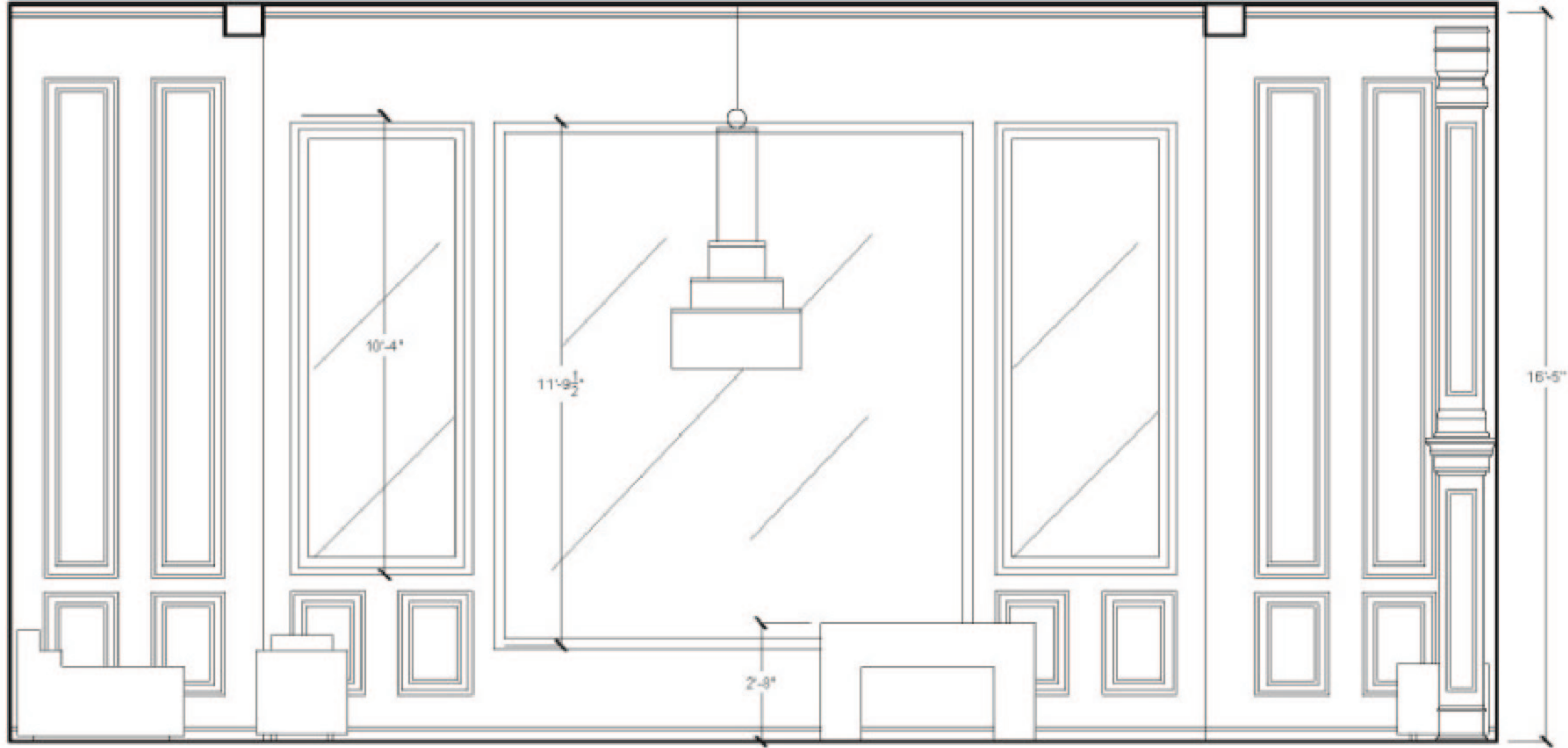
B ELEVATION



D ELEVATION



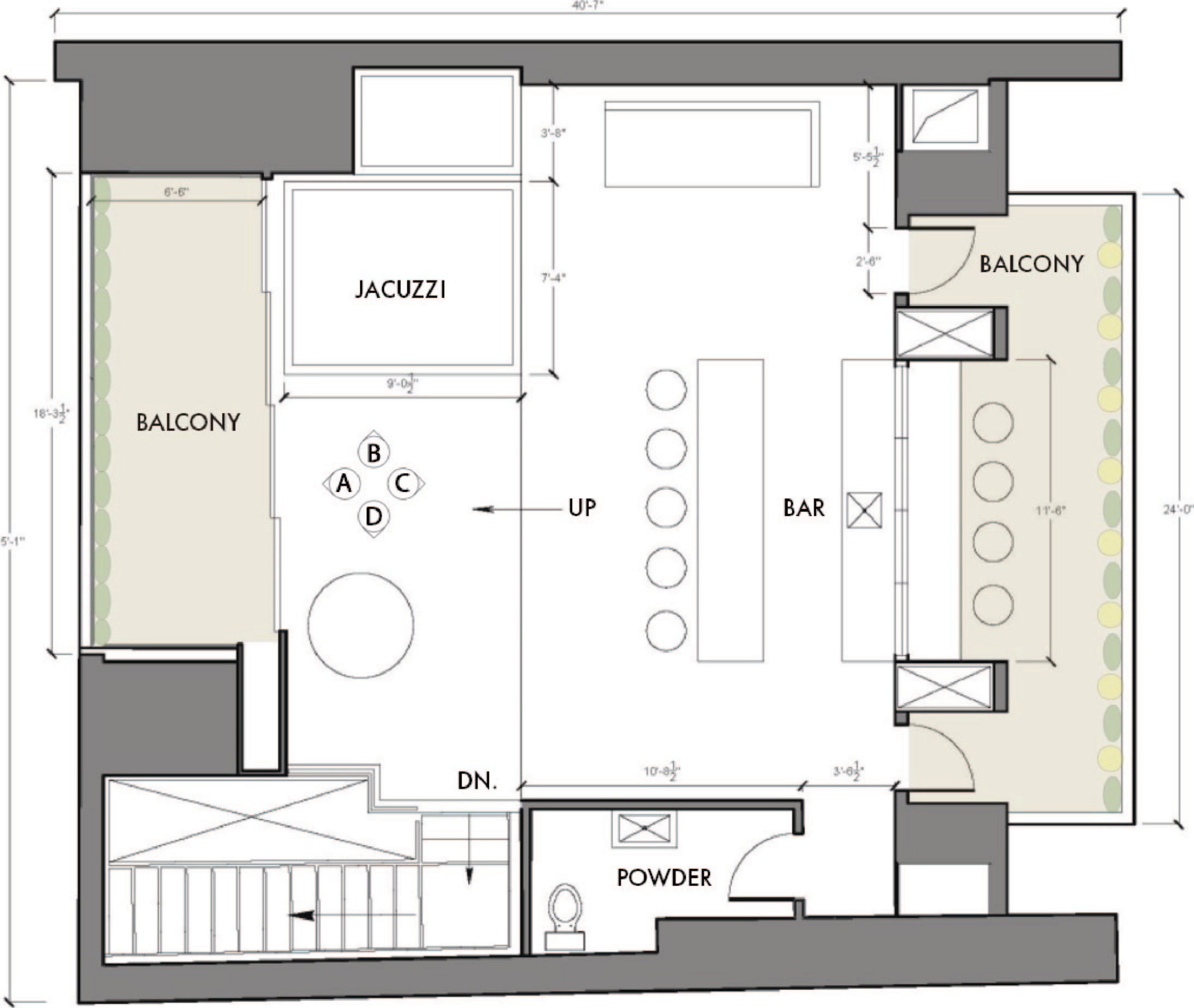
A ELEVATION



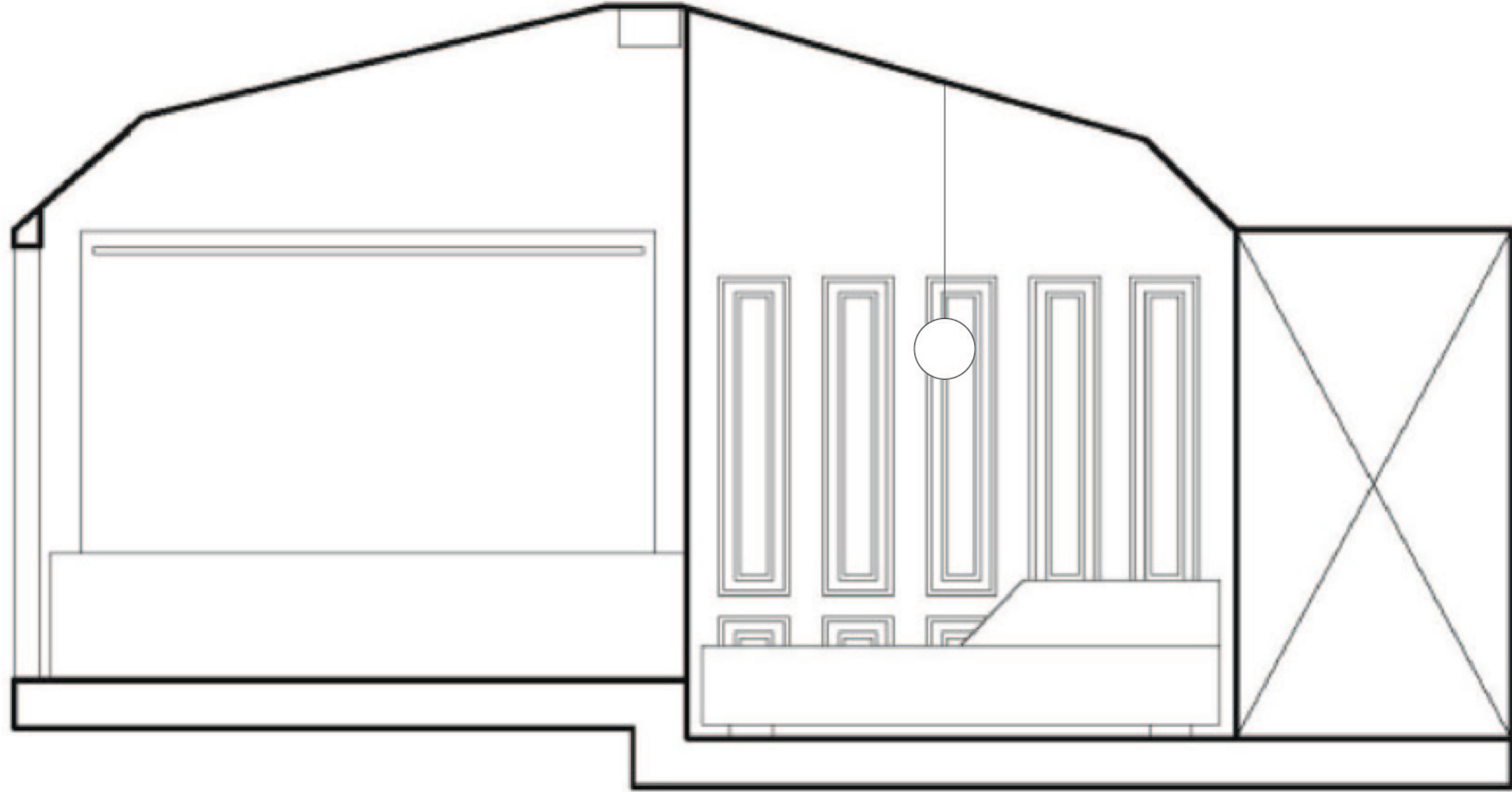
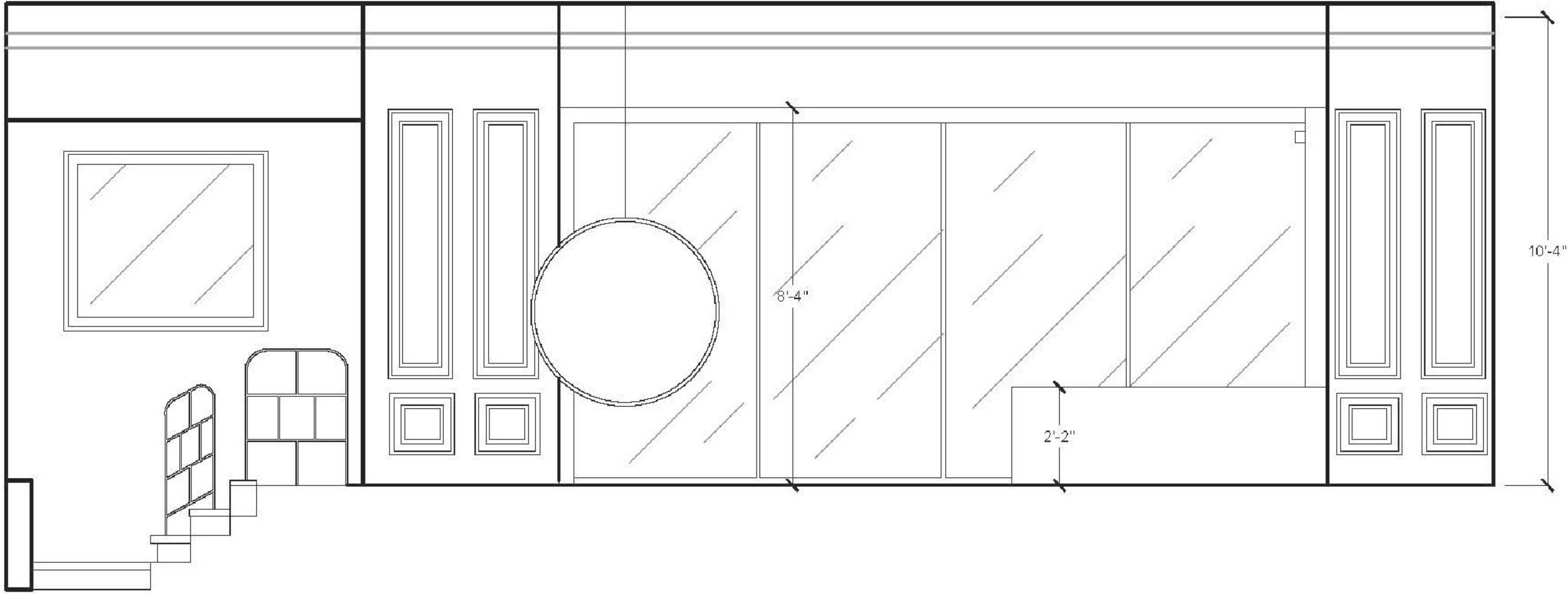
C ELEVATION



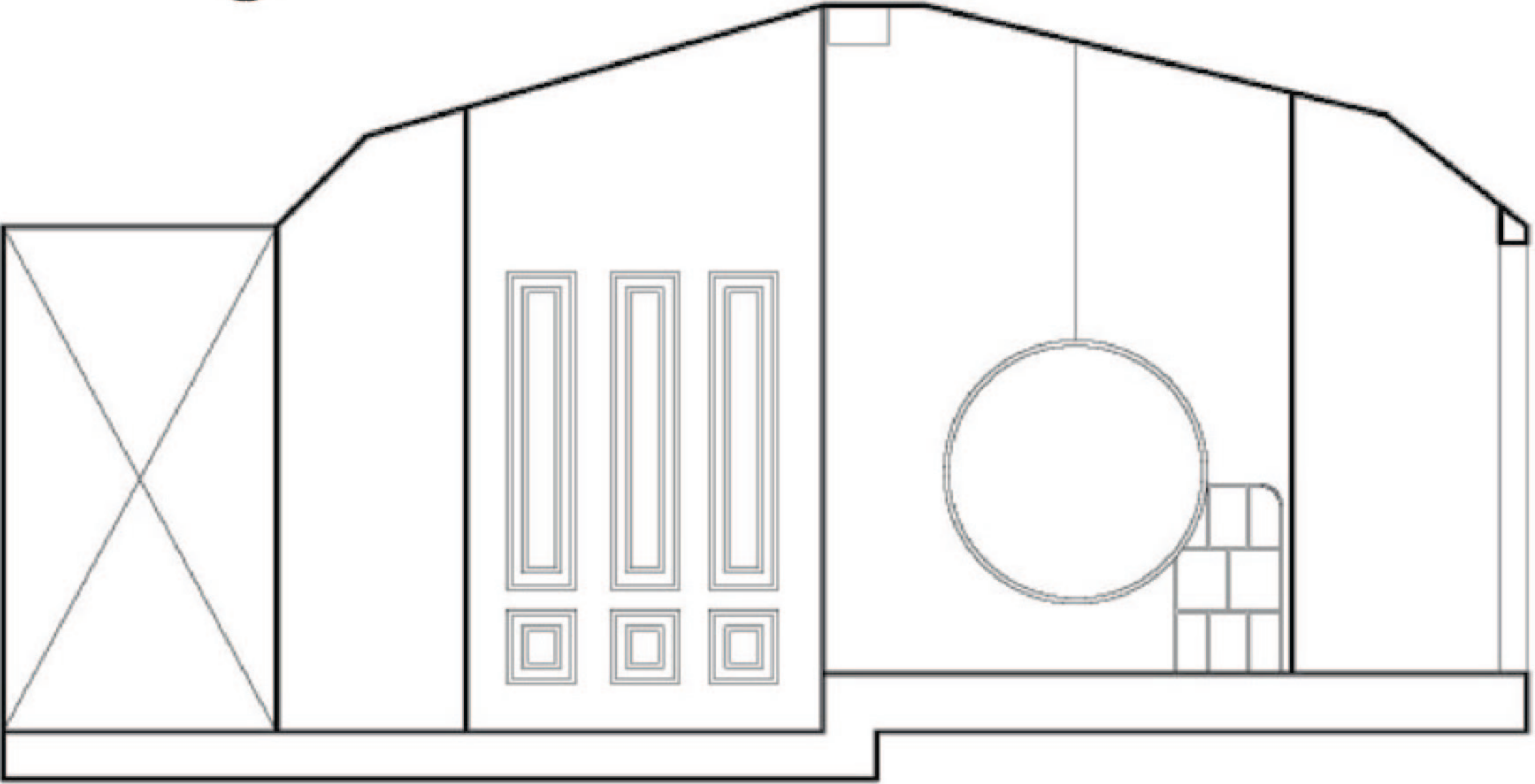
8TH FLOOR PLAN AND ELEVATIONS



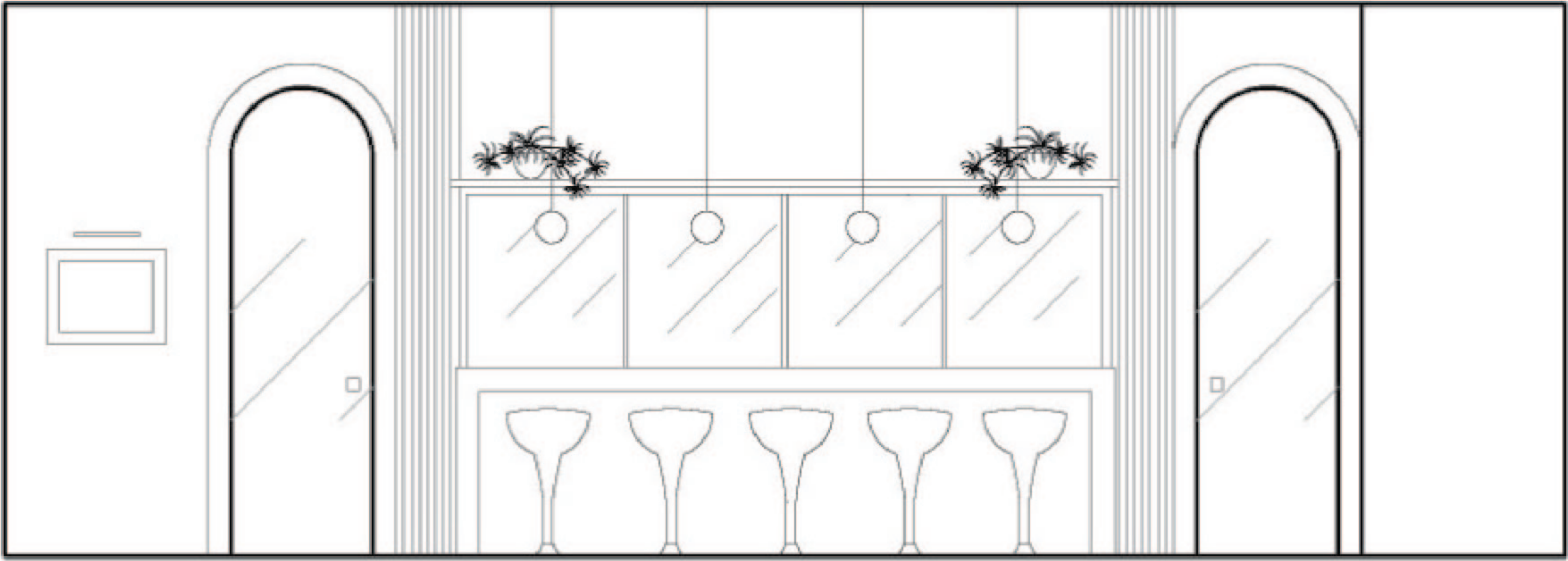
8TH FLOOR PLAN



B ELEVATION



D ELEVATION



C ELEVATION

6TH FLOOR RENDERINGS



REFERENCE FF&E SCHEDULE



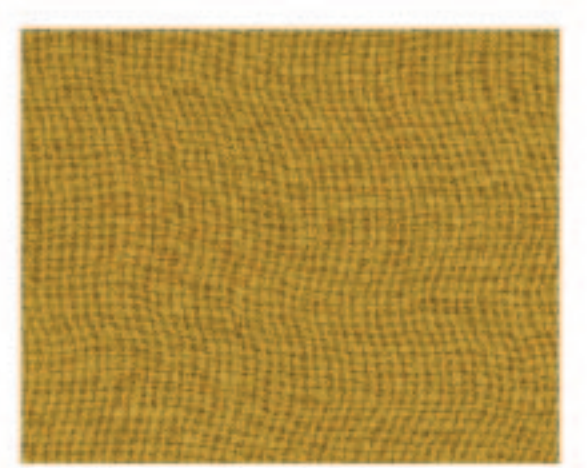
8TH FLOOR RENDERINGS



REFERENCE FF&E SCHEDULE



FF&E SCHEDULE

REF. #	ROOM	ITEM	VENDOR	DESCRIPTION	USE	PHOTO
1	6TH FL LIVING	FABRIC	CLARENCE HOUSE	RINALDI: AZURE	REUPHOLSTER POOL TABLE	
2	6TH FL LIVING	FABRIC	CLARENCE HOUSE	HERAKLION DAMASK: MALACHITE	COUCH PILLOWS	
3	6TH FL LIVING	FABRIC	CLARENCE HOUSE	SHIPPOU: GLACIER	REUPHOLSTER ARMCHAIR	
4	7TH FL BALCONY	FABRIC	GLANT	MONTECITO: ROSE	UPHOLSTERED WALL PANELS	
5	7TH FL BALCONY	WALLPAPER	CLARENCE HOUSE	TIBET PRINT: CINNABAR	ON WALL PANELS	
6	6TH FL LIVING	FABRIC	CLARENCE HOUSE	ALSACE LINEN: CHARTREUSE	COUCH PILLOWS	
7	8TH FL BAR ROOM	FABRIC	CLARENCE HOUSE	TATSU: TEAL	UPHOLSTERED WALL PANELS	
8	8TH FL BAR ROOM	FABRIC	CLARENCE HOUSE	ODL TWILL: WATER	UPHOLSTERED WALLS	
9	8TH FL BAR ROOM	FABRIC	CLARENCE HOUSE	ALSACE LINEN: YELLOW	COUCH PILLOWS	
10	8TH FL BAR ROOM	FABRIC	CLARENCE HOUSE	ZERMATT: ANTELOPE	DECORATIVE CHIAR PILLOWS	
11	6TH FL LIVING	SIDE TABLE	IRONIES	GREEN LIT SIDE TABLE	TWO ON BOTH SIDES OF COUCH	
12	6TH FL LIVING	COFFEE TABLE	IRONIES	“LAC” PATTERN SUFI COFFEE TABLE	IN FRONT OF COUCH	
13	6TH FL LIVING	RUG	NOBILIS	TABIS BAUHAUS	UNDER THE ARMCHAIRS	
14	6TH FL LIVING	RUG	NOBILIS	HAND KNOTTED	UNDER THE POOL TABLE	

FF&E SCHEDULE

REF. #	ROOM	ITEM	VENDOR	DESCRIPTION	USE	PHOTO
15	6TH FL LIVING	COUCH	CHARLES TASSIN	METAL BASE (CUSTOM UPHOLSTERY)	REUPHORDERED WITH MONTECITO	
16	6TH FL LIVING	ARM CHAIR	PIERRE FREY	ROSELINE ARMCHAIR (CUSTOM UPHOLSTERY)	REUPHORDERED WITH SHIPPOU	
17	6TH FL LIVING	SIDE TABLE	DELISLE	GUERIDONS: BRONZE	CENTERED BETWEEN ARMCHAIRS	
18	6TH FL LIVING	CHANDELIER	DELISLE	ART DECO: IRON AND CRYSTALS	CENTERED IN ENTERTAINMENT RM.	
19	6TH FL LIVING	WALL SCONCE	DELISLE	GUERIDONS: BRONZE	CENTERED BETWEEN ARCHWAYS	
20	7TH FL BALCONY	PAINTING	AUDE HERLEDAN	ABSTRACT COMPOSITION	CENTERED ON WALL	
21	6TH FL LIVING	PAINTING	AUDE HERLEDAN	TO ANOTHER LAND	CENTERED BETWEEN ARMCHAIRS	
22	6TH FL LIVING	PENDANT LIGHT	PORTA ROMANA	BRIGHT BRASS WITH MILK GLASS	ON EITHER SIDE OF ARMCHIARS	
23	8TH FL	PENDANT LIGHT	PORTA ROMANA	URCHIN CHARNDELIER IN BODU GOLD	ABOVE BAR	
24	8TH FL	DAYBED	CHARLES TASSIN	CHESS MERIDIENNE	ADD UPHOLDERED PILLOWS	
25	8TH FL	CHANDELIER	DELISLE	FOLIAGE: IRON AND PORCELAIN	ABOVE DAY BED	
26	8TH FL	PAINTING	AUDE HERLEDAN	PAYSAGE	ABOVE DAY BED	