

KNEEDLER FAUCHÈRE

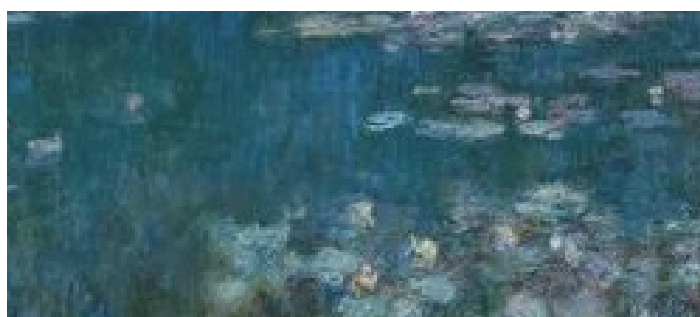
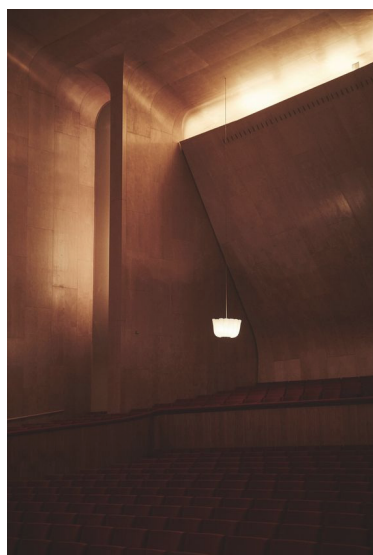
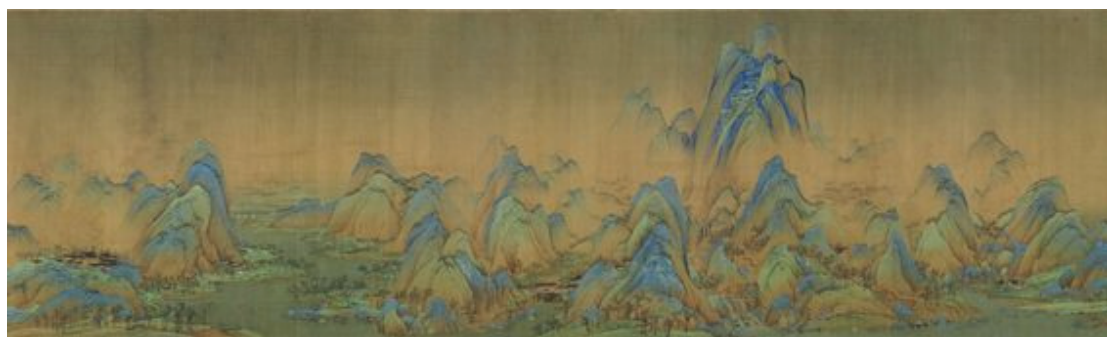
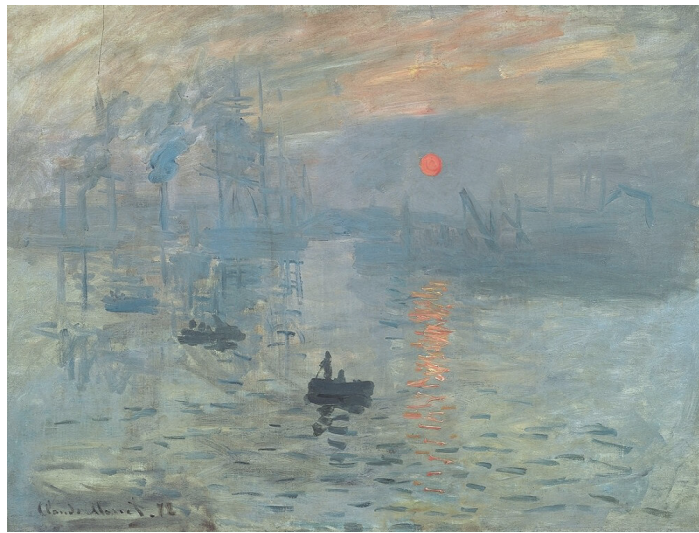
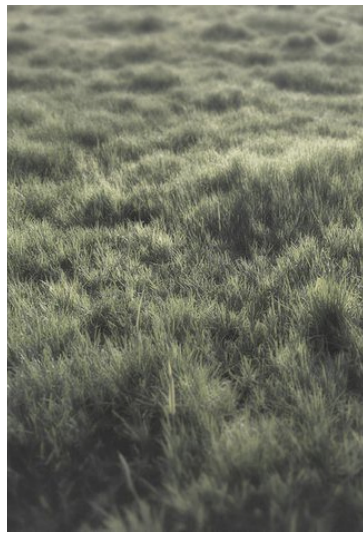
ROCKY LAFLEUR

CALVIN MA

SCHOLARSHIP FUND
STUDENT COMPETITION
2023



DESIGN BOARD



DESIGN CONCEPT

The harmonious conversation between the Château de la Chevalerie and the enveloping sky and French countryside landscape unraveled as inspiration for Rocky's guest house. Taking in the spellbinding surrounding nature summoned images of landscape scenes from the Chinese scroll painting *A Thousand Li of Rivers and Mountains* by Wang Ximeng, Claude Monet's *Impression, Sunrise*, and *La femme du rivage* by Philippe Charles Jacquet, which guided the color stories and thematic elements throughout the spaces. Motifs of flora, fauna, funga, and aqua are interwoven and detailed in the design. Thought is also placed in expressing the east-meets-west sensibilities of Kneedler Fauchère formed by Dorothy Kneedler and Lucienne Fauchère.

As Rocky assembled individuals of all different backgrounds in the design community and produced a sense of belonging and connection, I wanted to design for him a guest house in the Château de la Chevalerie that symbolizes and celebrates his doing so. Whether for his spiritual explorations, lunch with friends, or his large parties, I only hope to have created a space where he could have found tranquility, enjoyment, and inspiration.

Salon

In the salon, pieces were selected to present the room as a forest, informed by curlicue tendrils, uneven textures, and organic forms. Botanical elements were of either literal forms, such as the fungi and leaf tables and lamps, or abstract, such as the plastered walls. The undulating walls emulate towering trees of a dense forest, creating a sense of a glade sanctuary. This wall design also produces the softness of drapery without utilizing curtains in order to maintain the reasonable use of interior shutters. The ceiling is gilded in gold leaf so that as light reflects from it, the moments of shimmer depicts irregular rays of dappled sunlight streaming through tree canopies. The color story of the salon emerges from the golden amber and soft natural greens of *A Thousand Li of Rivers and Mountains*, which had used mineral pigments to depict a Daoist fairyland.

Programmatically, the salon serves as the living room. As 18th century French salons were hosted gatherings for intellectual discussions, this space is established to encourage meaningful conversation and connection between Rocky and his beloved guests. A bar area is set in between the sitting area and the "study". Even with a sofa, two lounge chairs, and an accent chair, additional ottomans are tucked under the bar console so that more guests can join in conversation, especially during Rocky's hosted events. A center table with a Constantin Brâncuși sculpture atop and Armand Albert Rateau armchairs encircling it creates a nook that fosters reading from Rocky's collection of books, professional meetings, or light dining. This study stores Rocky's cultural and intellectual collections throughout his lifetime, embracing the notion of a "salon".

A mirror hung to the right of the center table reflects light from the window across, and a large Chinese screen painting is hung at an angle above the shelves, which draws from art displays of traditional Asian interiors. The painting illustrates the silken yet strong attribute of flora. Similarly, the salon maintains a soft yet established character, with focus placed upon each individual piece and person and their story that's developed as they coordinate with each other.

Primary Bedroom

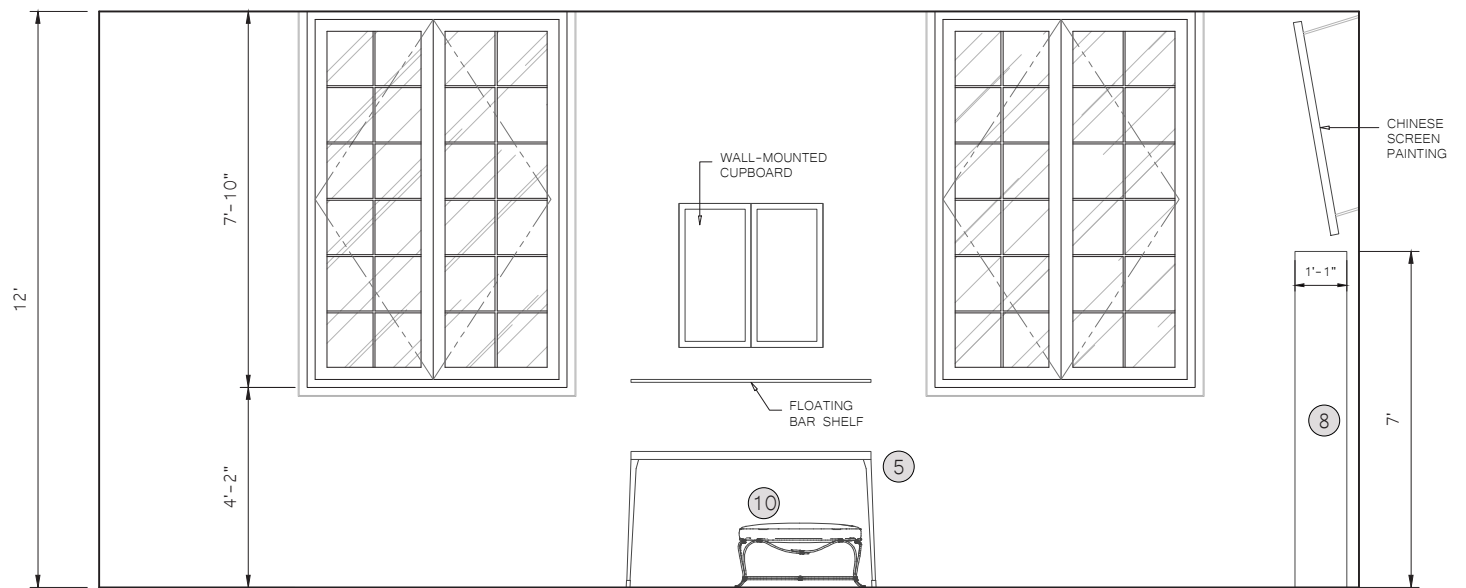
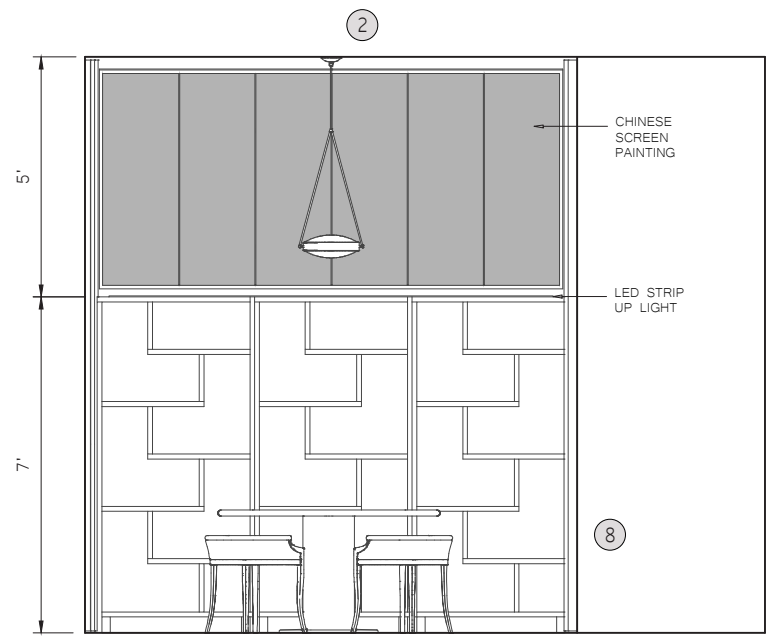
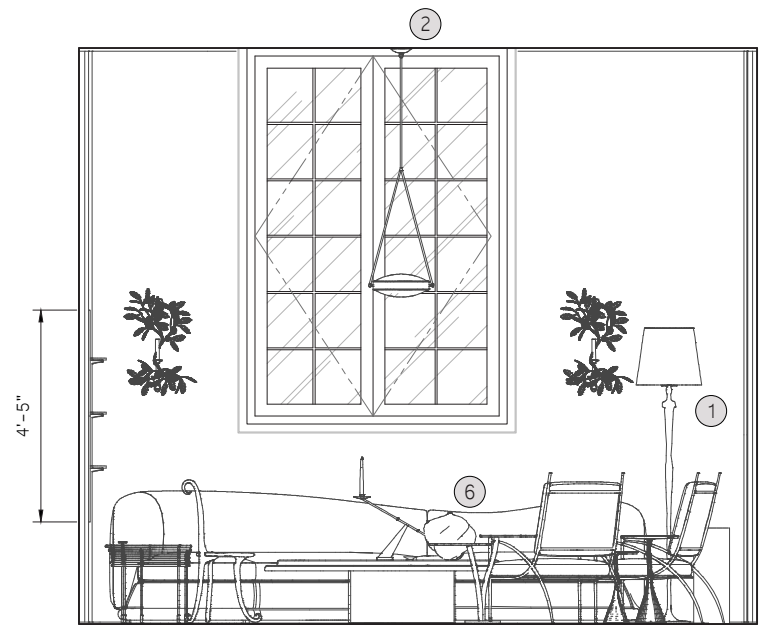
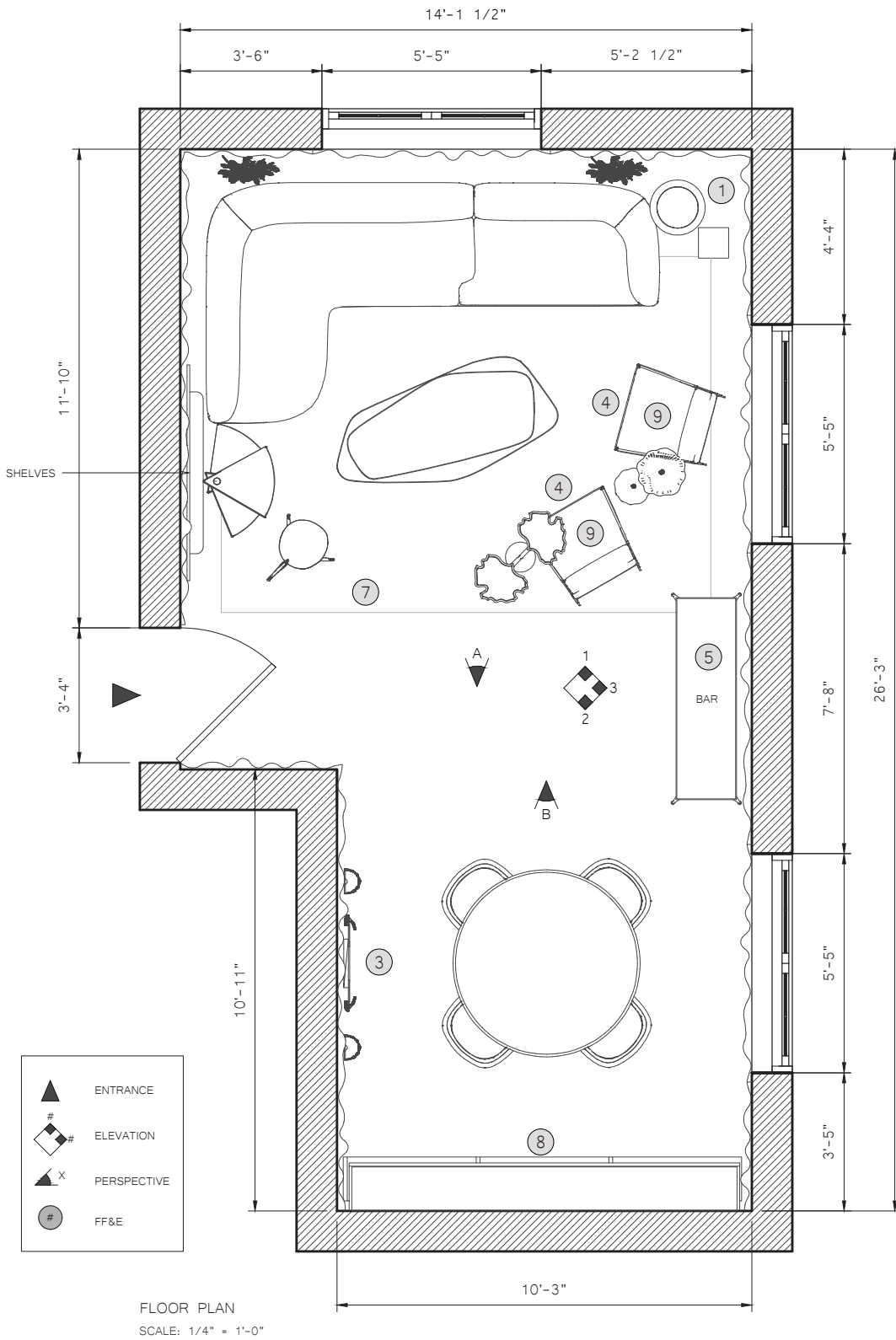
Rocky's bedroom is designed with fewer textures to promote rest and calm, and is informed by Monet's *Impression, Sunrise*. The color story is drawn from the misty painting of the port of Le Havre with a burning image and reflection of the sun. Aquatic elements are depicted throughout several elements in the room. The serpent table represents water snakes, and the Giacometti Leaf Lamps aquatic plants. The blanket also drapes down the bed akin to flowing water. The Minawa wallpaper from Nobilis illustrates soft waves and swells and is adhered onto a folding screen, of which each panel consists of differing heights to symbolize the elongated Chinese mountains in *A Thousand Li of Rivers and Mountains*. The bistro arrangement in front of this screen allows Rocky to invite a friend for a light breakfast or coffee, or serves as an additional desk when the guest room is in use.











The bed is surrounded by a wooden partition due to its placement. Because a view out the windows from the bed would be preferable, this wall for the bed seemed to be the ideal location. However, this creates the scenario that the head would be right next to the bedroom entrance. This bed partition therefore creates a sense of enclosure and protection when sleeping. Following, while the interior shutters allow greater light blocking while sleeping, a gauze-like drape can be hung across to merely filter the light and invite a soft shimmering dance as light streams through the trees and sheer drape.

Guest Bedroom | Office

La femme du rivage by Philippe Charles Jacquet portrays an enigmatic water and mountainous scene, and guides the design of the guest bedroom which serves also as Rocky's office. The bed is placed again for a view out the windows, with a screen to block direct intervention with the head of the bed. This then allows the workspace to be in direct view of the entrance. Soft greens support the commanding Nenufar fabric from Dedar which evokes an impression of waterlilies. The Lion Paw table and human body sculpture highlight natural curves and silhouettes, also relating to the flow of water.

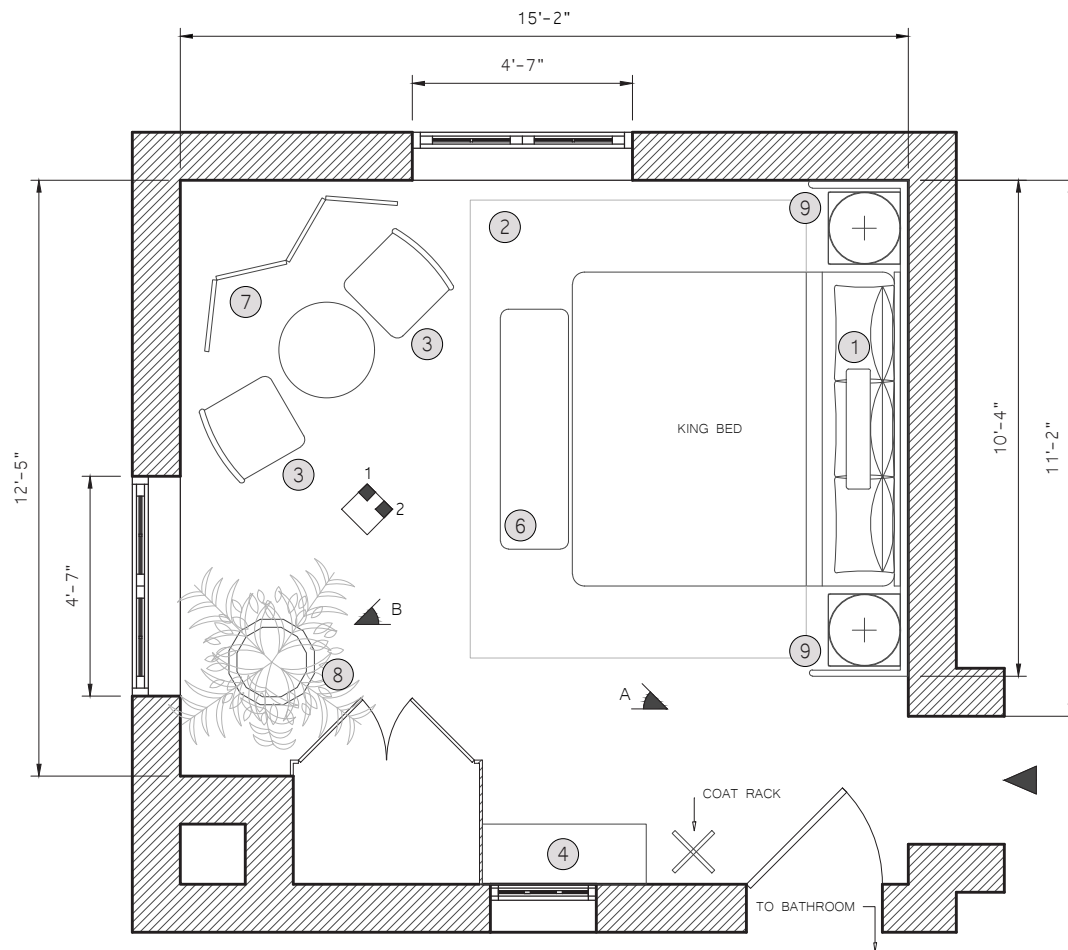




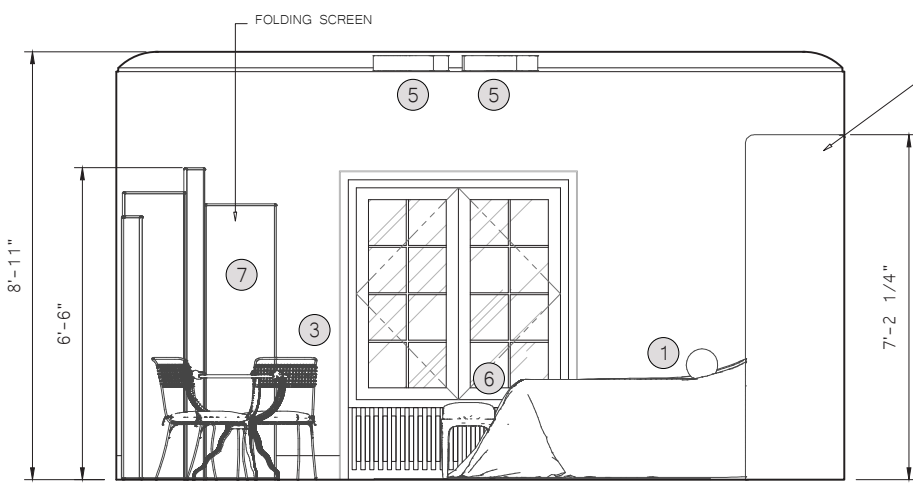
- | | | | | |
|--|--|---|--|--|
|  <p>1 PORTA ROMANA
Man 3 Floor Lamp</p> |  <p>2 HILLIARD LAMPS
Seraph Pendant</p> |  <p>3 CASTE DESIGN
Echo Mirror</p> |  <p>4 IRONIES
Marcel Lounge Chair</p> |  <p>5 GREGORIUS PINEO
Elgin Console (Small)</p> |
|  <p>6 HOLLY HUNT
Coiled Vessel</p> |  <p>7 ERDEN
Etched I Tan</p> |  <p>8 KERRY JOYCE
Diaz Bookcase</p> |  <p>9 ZAK + FOX
Khotan</p> |  <p>10 GREGORIUS PINEO
Twig Iron Ottoman</p> |



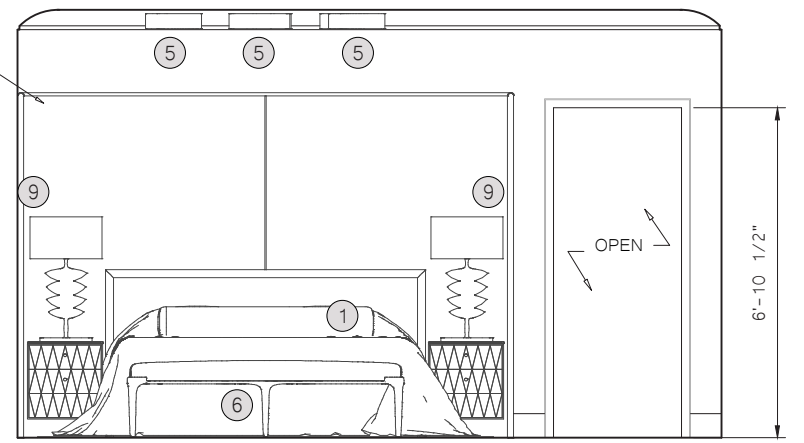
Primary Bedroom



FLOOR PLAN
SCALE: 1/4" = 1'-0"



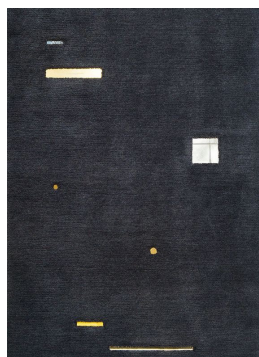
ELEVATION 1
SCALE: 1/4" = 1'-0"



ELEVATION 2
SCALE: 1/4" = 1'-0"



① DEDAR
À Contre-Jour



② ERDEN
Notation Abstraction



③ GREGORIUS PINEO
Tuilerie Garden Sidechair



④ HOLLY HUNT
Meuble D'Appui 1932



⑤ PORTA ROMANA
Allegra Bulkhead



⑥ PIERRE FREY
Frame Bench



⑦ NOBILIS
Minawa

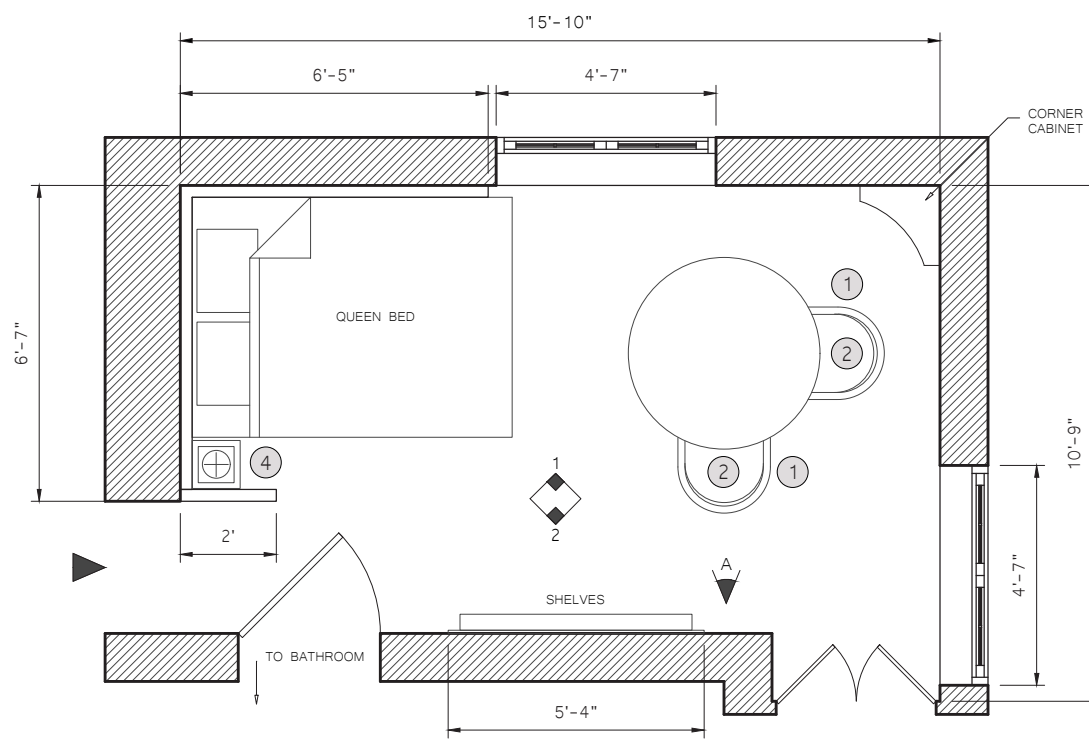


⑧ GREGORIUS PINEO
Swirl Planter

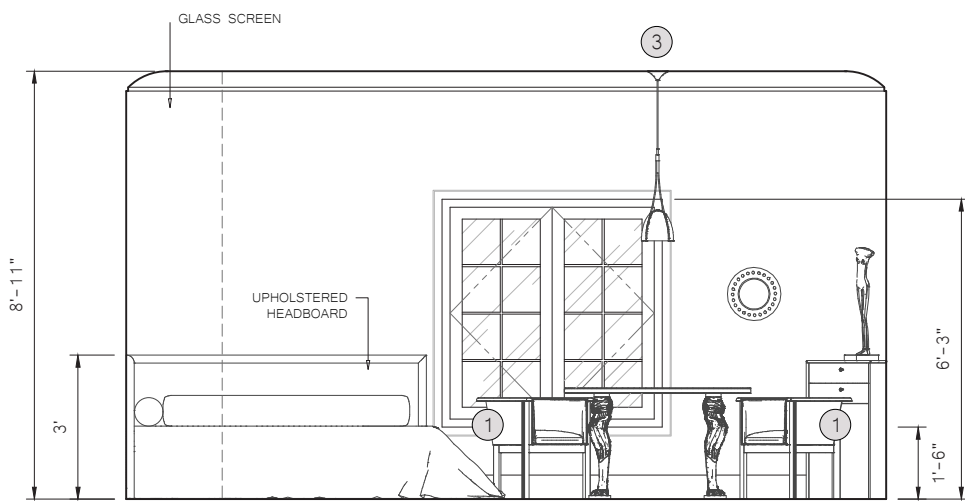


⑨ PORTA ROMANA
Giacometti Leaf Lamp

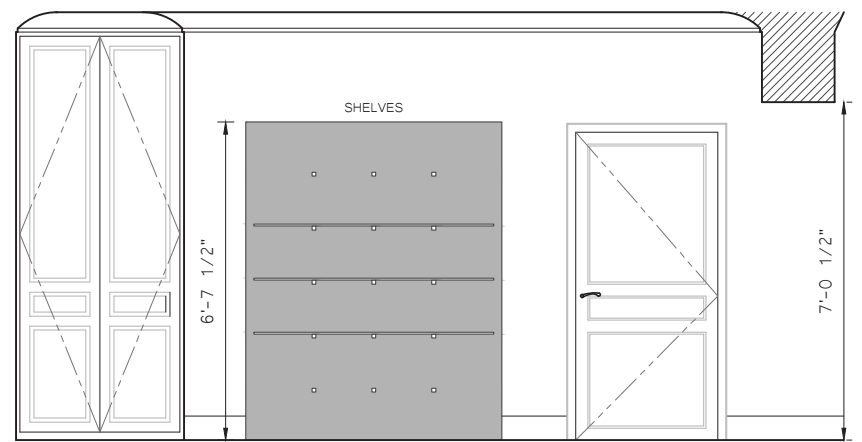




FLOOR PLAN
SCALE: 1/4" = 1'-0"



ELEVATION 1
SCALE: 1/4" = 1'-0"



ELEVATION 2
SCALE: 1/4" = 1'-0"



① HOLLY HUNT
Cycle I Chair



② DEDAR
Nenufar | Deep Forest



③ HOLLY HUNT
Black Cat Pendant



④ HOLLY HUNT
Mago Table Lamp

THANK
YOU

