

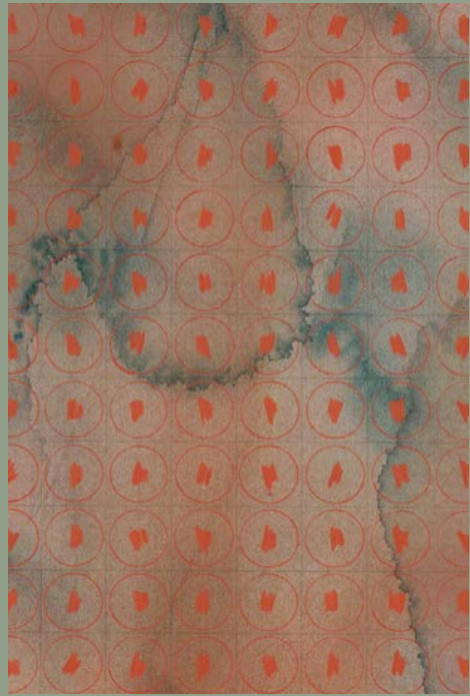


Rocky LaFleur

Chateau Guest House
Student Competition 2023

Kaitlyn Darby

MOODBOARD



ABOUT

My design for Rocky LaFleur's chateau guest suite draws its thematic inspiration from the French Rococo movement. While the Château de la Chevalerie was built in the previous century (1640), it underwent renovations in the 18th and 19th centuries, so I decided to center my design around the ideology and themes of the period synonymous with the concept of a chateau. However, I reinterpreted the Rococo motifs from a conceptual standpoint, rather than decorating with all period specific pieces.

The Rococo period is associated with the reign of Louis XV of France (1710-1774). The term Rococo, or late Baroque, evolved as a combination of the French word 'rocaille' and 'coquille', which referenced the 18th century grottos that were adorned with rocks and shells. The characteristics of the grotto were extremely telling of the values and ideals of the period, as they were a site for leisure, fantasy, pleasure, and contained nods to Classical mythology. The furniture was designed for relaxation, comfort, and casual conversation. The decor was ornate, asymmetrical, curvilinear, and featured motifs found in nature such as shells, foliage and scrolls. The dreamy color palette often featured pastels, blues and greens, and other airy colors.

In learning about Rocky, I felt that many of the themes of the Rococo would suit his needs for a countryside place of respite. Rocky has an incredibly vibrant and magnetic personality coupled with a deep spiritual practice. My design aimed to cater to both the inner and outer realms that Rocky inhabits, all with an overall sensibility of joy. Conceptually, the Rococo speaks to both worlds, balancing play and fantasy with leisure, relaxation, and nature. Rather than drawing directly from period specific decor, I chose to reinterpret the themes of fantasy, play, nature, grottos, and shells through a more adventurous and contemporary sense of pattern, form, and color.

Throughout the three rooms, I combined antique pictorial tapestries and textiles from the Pierre Frey Braquenié collection alongside bold, contemporary silhouettes and playful colors. The rooms are grounded by airy and earthy plaster wall colors (sky blue, sage green, and mauve) and Versailles style hardwood floors. I chose to keep the original floors and most of the architecture intact so that the rooms did not stand out dramatically from the rest of the chateau. However, I wanted the guest suite to feel unique to Rocky's personality, which is achieved through the whimsical decor, patterns, and pops of color. The more saturated hues and eclectic patterns are apparent through the textile selection. The lighting and accessories underline the Rococo motifs in each of the rooms, as they are reminiscent of rocks, shells, and the grottos featured in historical paintings, yet their more minimal plaster form is distinct from traditional ornate and gilded Rococo accessories.

SALON

My inspiration for the salon began with the selection of a Pierre Frey panoramic fabric used as an oversized wall hanging. I drew the color palette and surrounding textiles from this piece, which is typical of a verdure tapestry from Aubusson in the 17th and 18th centuries. In the salon seating area, I chose the Gregorius Pineo Hadley sofa for its unique, soft scrolling arms and comfortable depth. The sofa is upholstered in Pierre Frey's Touraine jacquard, which features a beautiful palette and vegetal forms. For the remaining seating area, I chose more contemporary, graphic silhouettes. I loved the bold cobalt blue color of the Pierre Frey Dolmen table juxtaposed with the muted sage green walls, jacquards, and golden Nobilis area rug. The dramatic high back of the Ironies Turku lounge chair is paired with the playful and striking shape of the Pierre Frey Litho bench.

The walls are punctuated by Porta Romana sconces, mirrors, and lamps containing delicate scrolls and carved plaster details. The Porta Romana Scallop Shell sconces and Vela Lamp were chosen for their influence from Rococo themes of rocks and shells.

The side tables and consoles are grounded by darker metal finishes and Verde Fantastico marble. I fell in love with the fantastical, surreal charm of the Gregorius Pineo Magritte console and Ironies side table. Matching Hilliard Parasol chandeliers in an antique bronze patina also help to add structure to the space while taking advantage of the high ceilings.

SALON

(CONTINUED)

In the Salon nook, a heavy Gregorius Pineo round table is surrounded by graphic Pierre Frey dining chairs, upholstered in luxe and highly textural Yeti fabric. In the nook, a dreamy oversized watercolor painting by artist Kayt Fitzmorris leans against the wall.

WEST BEDROOM

I selected the West Bedroom to be Rocky's primary bedroom, with an emphasis on relaxation and dreaming. The walls are a typical Rococo sky blue, finished in a soft Roman Plaster texture by Resources Peintures. I wanted Rocky's bedroom to feel like a dreamscape. The walls and the softer, mostly monochromatic palette help to achieve this. The palette of this room is more subtle than the Salon and does not feature any bold pops of color, rather a range of naturalistic light blues, greens, golds, and ivories.

The bed features a Pierre Frey Johanna headboard with Dedar moire fabric and contrasting trim. The bedding is custom made from Nobilis Velours Calders and silk Dedar Viridiana moire sheets. I wanted the bed to feel especially dreamy and luxurious and blend in with the cloud-like plaster paint, so I combined luxe silks, velours and a soft, fantastical moire print. Sculptural Porta Romana Selina tables are used as nightstands topped with Porta Romana lamps.

I took advantage of the room's slightly larger footprint and turned the corner space into a reading nook. The Pierre Frey Verso lounge chair and ottoman are finished in a Pierre Frey Fleury jacquard from the Braquenié collection. The Porta Romana Giacometti Cocktail Table with Verde Fantastico marble compliments the palette of the chair. An 18th century Flemish Verdure Tapestry hangs behind the seating area and features a complimentary palette. Pierre Frey two-toned silk taffeta curtains add another luxurious texture to the room.

The lighting and mirrors are from Porta Romana and feature scalloped shapes and carved plaster, which continue the motif of shell and rock forms. I chose a Gregorius Pineo Bantu chest for its additional storage and light colored palette.

EAST BEDROOM

The East Bedroom acts as a guest bedroom and office space for Rocky. Mauve plaster walls add an overall cozy feeling to the room. The Pierre Frey Johanna Headboard is used again with Nobilis Bargello fabric, featuring an ornate stitching pattern and muted blues, greens, and tans. The custom bedding is made from Pierre Frey Horizon fabric, a cotton linen blend with woven blue stripes. Beneath the bed is a Pierre Frey Tibere print rug, another piece from the Braquenié collection featuring greenery motifs reminiscent of 17th century designs.

Because the space is on the smaller side, I used the Gregorius Pineo Einarr Console in place of a desk. I loved the shape and weight of this wooden piece. I paired this with an oversized, comfortable Gregorius Pineo Paloma Dining Sidechair upholstered in a playful Pierre Frey Colette fabric. Above the desk, I placed the Porta Romana Jolly Mirror to help open up the room.

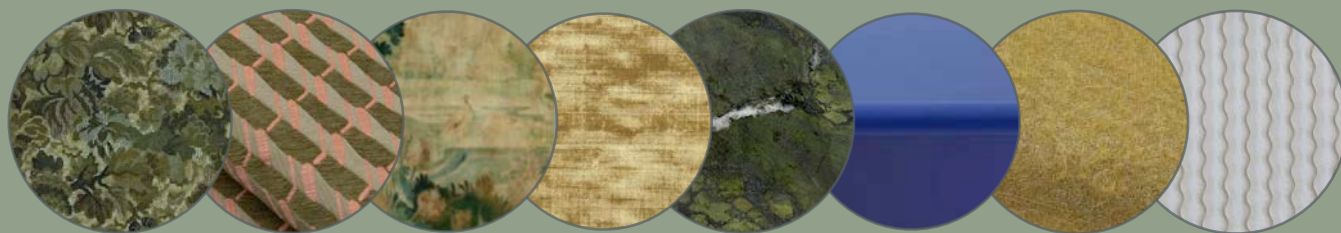
The desk features a bold Porta Romana Edna Lamp. The patterned gold glass adds a playful pop of color to the room. Two Porta Romana Clam Shell Sconces in Burnt Ochre patina flank the door, adding for extra light above the small Porta Romana Giacometti Cocktail Table. The Porta Romana Scalloped bulkhead light adds a subtle and playful form to the ceiling.

The corner of the room left just enough space for a small Pierre Frey Litho stool upholstered in a saturated blue velvet. Above the stool, another vibrant watercolor painting by artist Kayt Fitzmorris adds additional blue pops of color to help balance out the earthy, subdued walls.

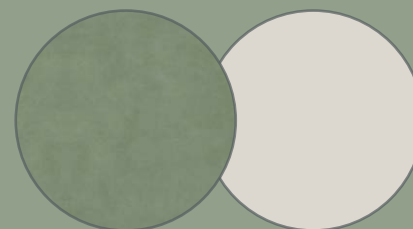
THANK YOU



TEXTURES



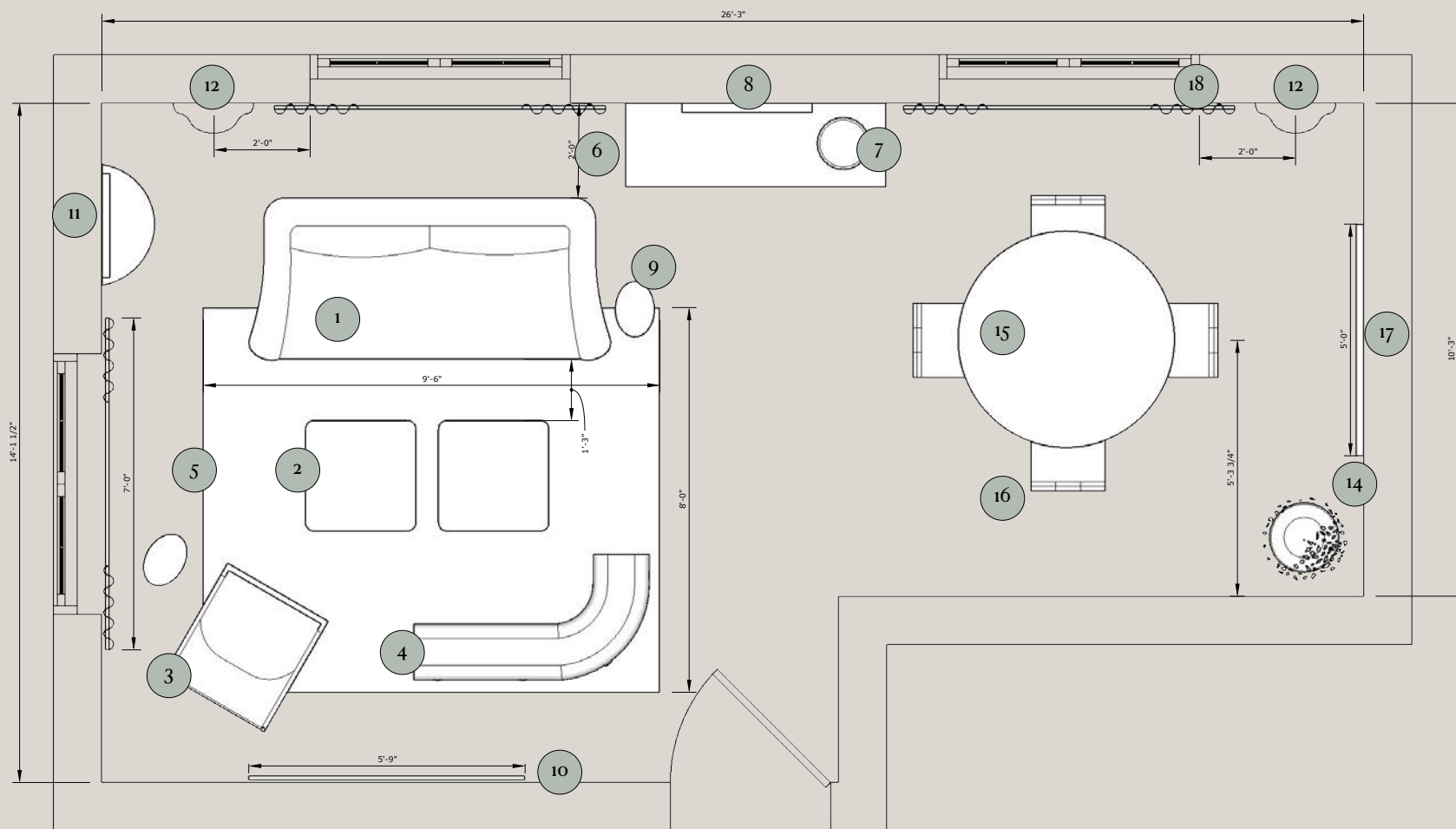
WALL COLOR



Resource Peintures Plaster - La Bohème Farrow&Ball Ammonite

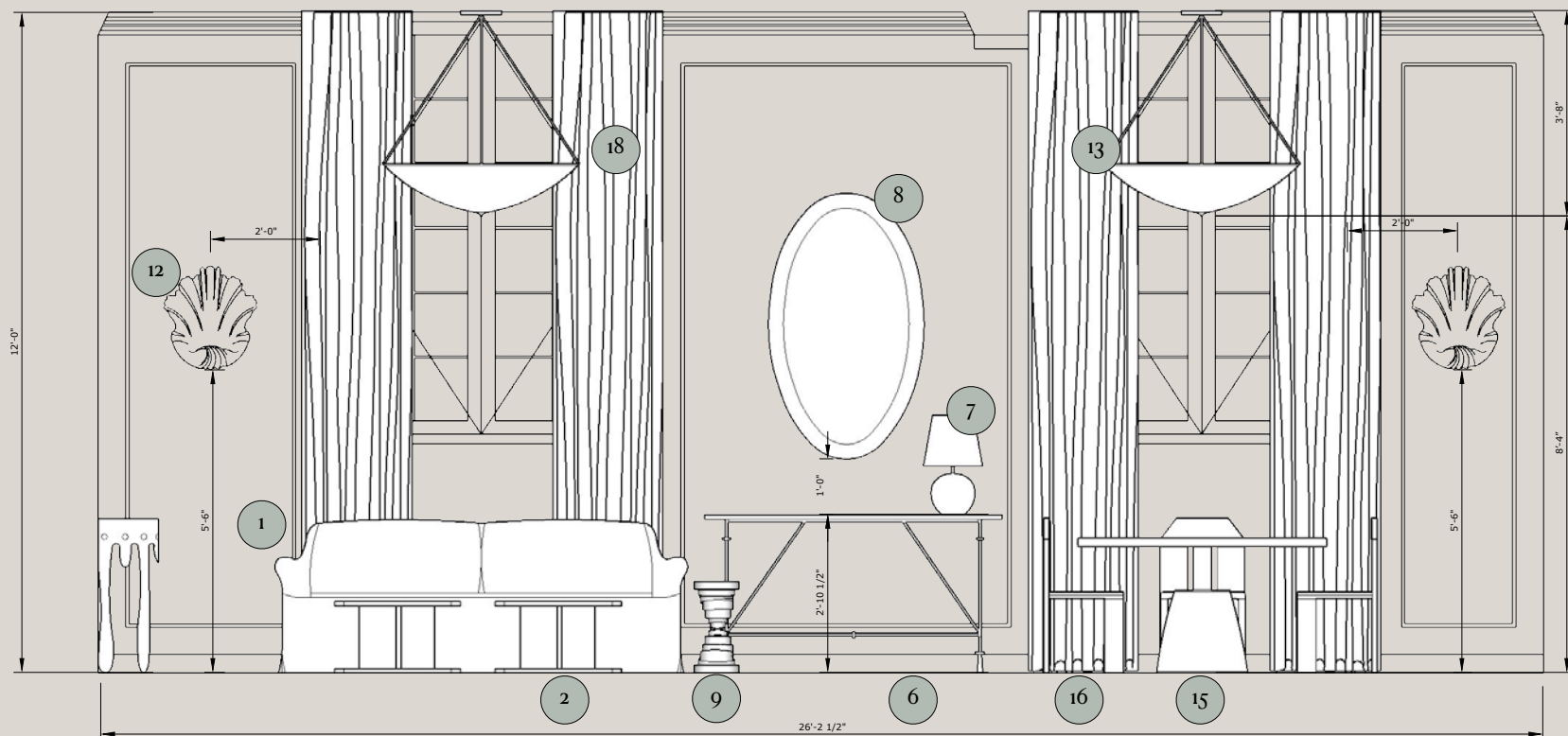


GROUNDPLAN



- | | | | | | | | |
|---|---|---|---|--|---|--|--|
| 
Gregorius Pineo
Hadley Sofa
Pierre Frey
Touraine - Sous Bois | 
Pierre Frey
Dolmen Table | 
Ironies
Turku Lounge Chair | 
Pierre Frey
Litho Bench | 
Nobilis
Rug - Tapis Pastine | 
Porta Romana
Stanley Console Table | | |
| 
Porta Romana
Vela Lamp | 
Ironies
Garland Mirror | 
Ironies
Inspo Table | 
Pierre Frey
Au Board du Lac
Tapestry Wall Hanging | 
Gregorius Pineo
Magritte Console | 
Porta Romana
Scallop Shell Light | 
Lamps by Hilliard
Parasol | 
Gregorius Pineo
Swirl Planter |
| 
Gregorius Pineo
Table | 
Pierre Frey
Chair | 
Pierre Frey
Yeti - Honey | 
Kayt Fitzmorris
Painting | 
Pierre Frey
Curtains - Matcha Sable | | | |

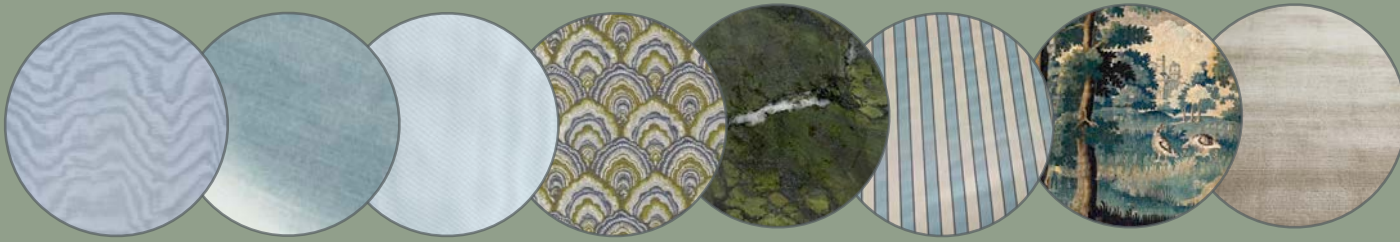
ELEVATION



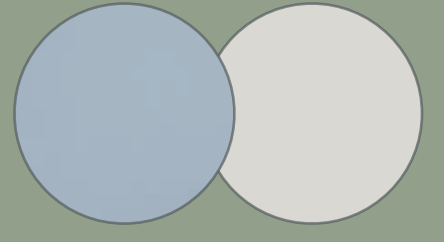
WEST BEDROOM



TEXTURES



WALL COLOR

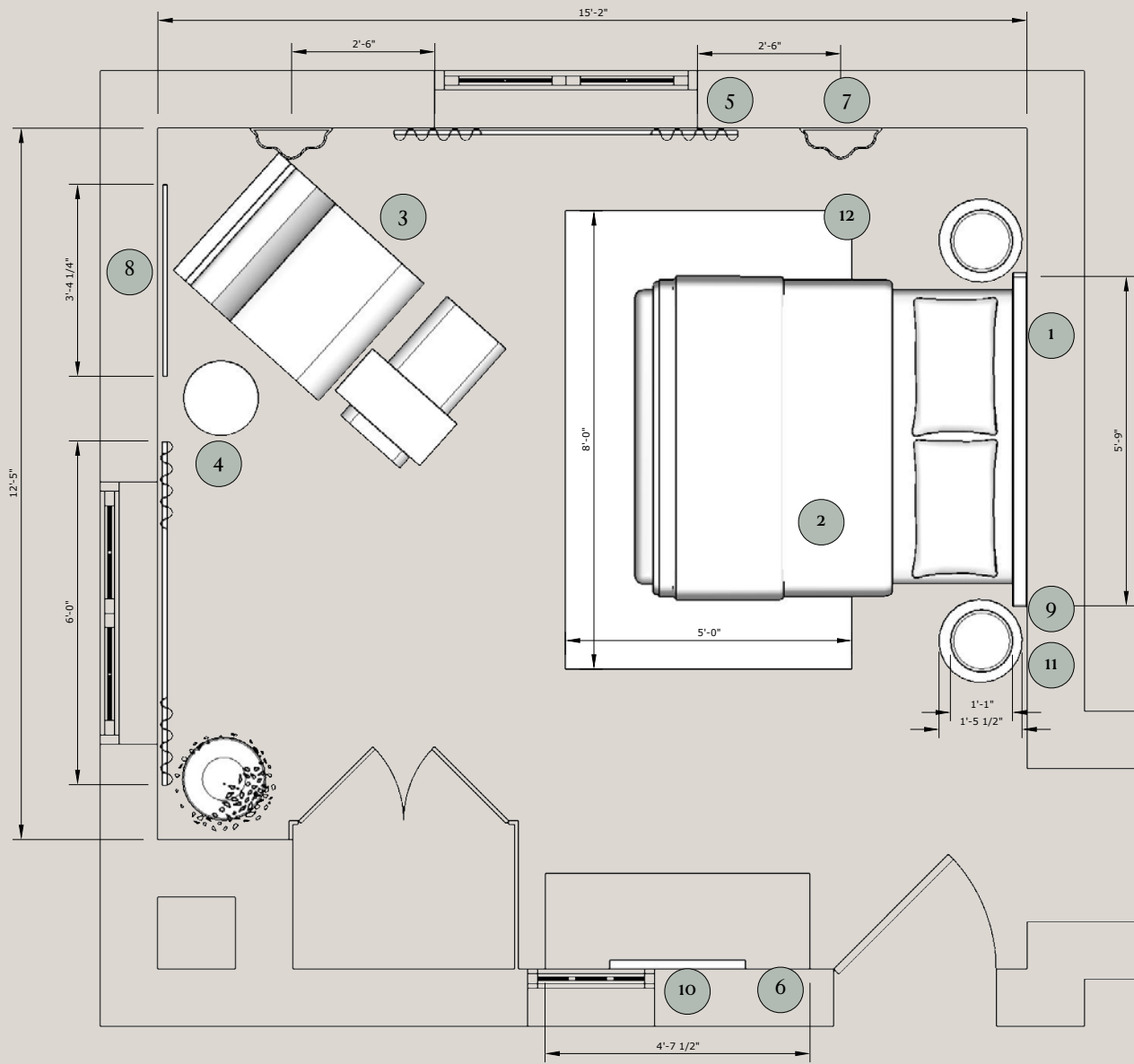


Resource Peintures Plaster - La Malice
Farrow&Ball Dimpse



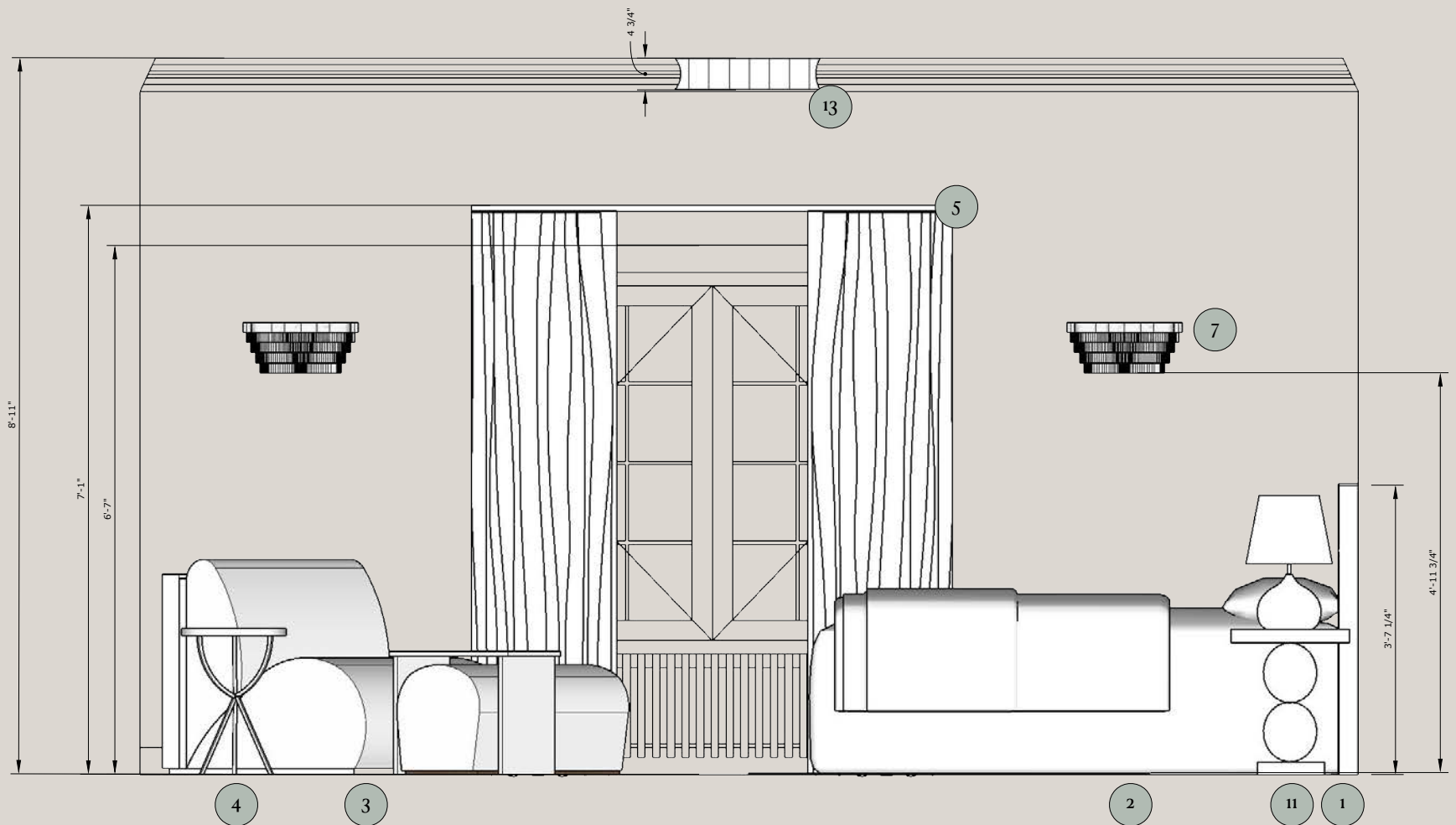
WEST BEDROOM

GROUNDPLAN



- | | | | | | | | |
|--|--|---|---|--|---|--|--|
|  <p>1
Pierre Frey
Johanna Headboard
Dedar
Amoir Fou Orange</p> |  <p>2
Nobilis
Bedding - Velours Calder 66
Dedar
Bedding - Viridiana Topaze</p> |  <p>3
Pierre Frey
Verso
Pierre Frey
Fleury - Grands Eaux</p> |  <p>4
Porta Romana
Giacometti Cocktail Table
(Verde Fantastico Top)</p> |  <p>5
Pierre Frey
Curtains - Zelina Ciel</p> | | | |
|  <p>6
Gregorius Pineo
Bantu Chest</p> |  <p>7
Porta Romana
Clam Shell Wall Light</p> |  <p>8
Antique
Flemish Tapestry</p> |  <p>9
Porta Romana
Ara Lamp</p> |  <p>10
Porta Romano
Clam Shell Mirror</p> |  <p>11
Porta Romana
Selina Side Table</p> |  <p>12
Porta Romana
Tapis Seti</p> |  <p>13
Porta Romana
Scalloped Bulkhead</p> |

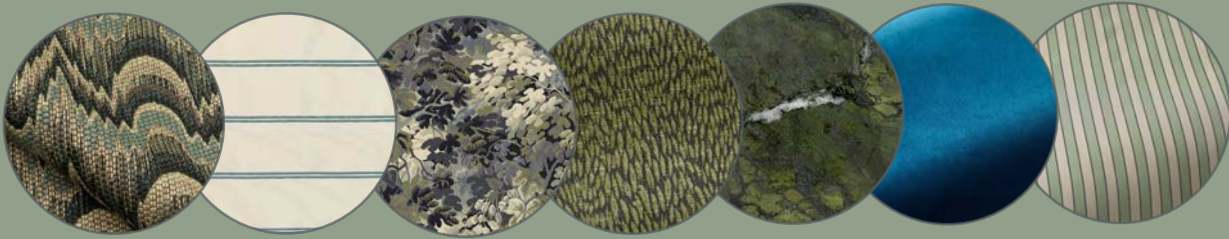
ELEVATION



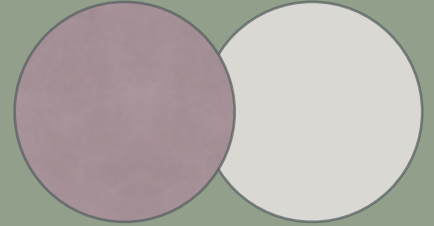
EAST BEDROOM



TEXTURES



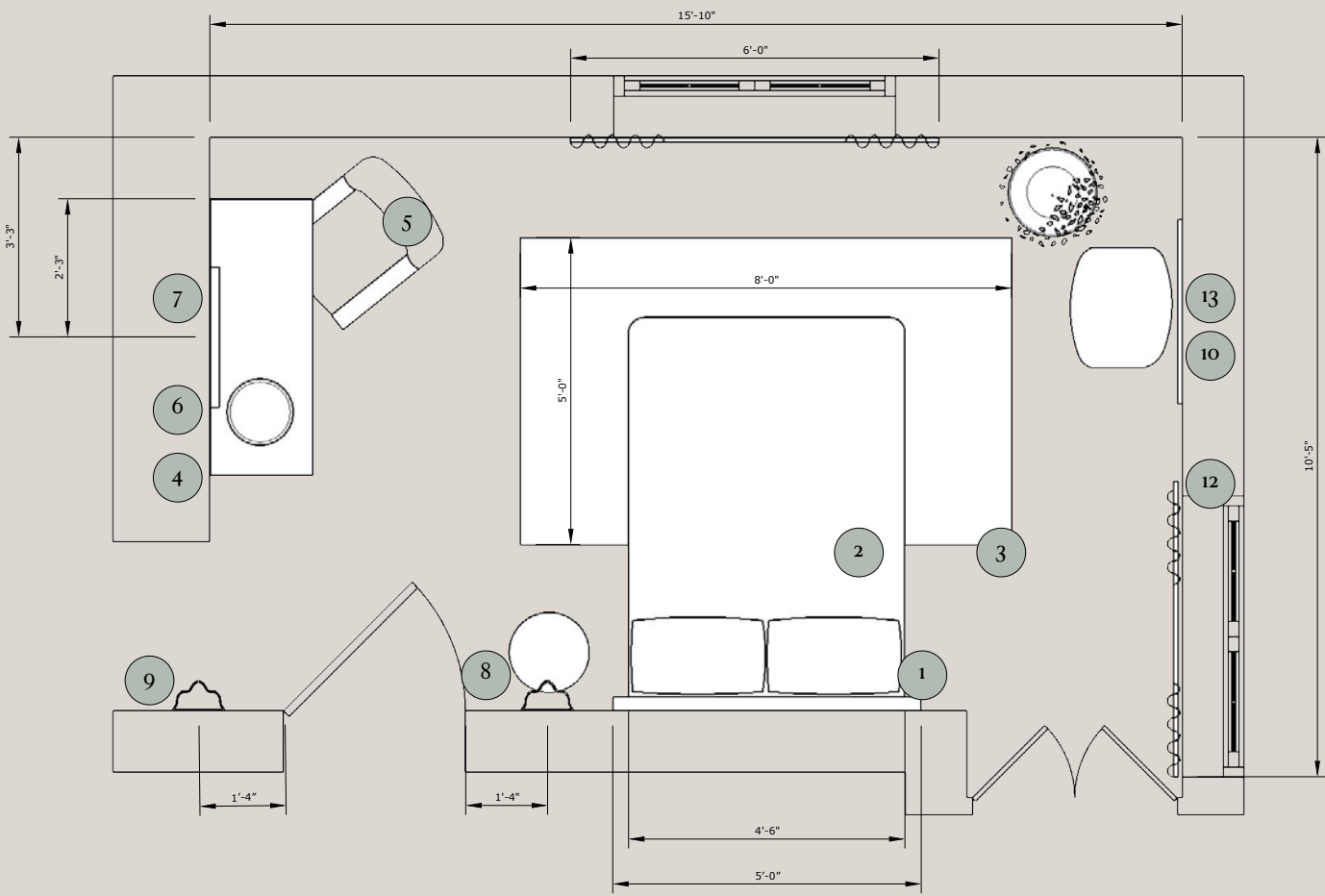
WALL COLOR



Resource Peintures Plaster - La Fleurette
Farrow&Ball Dimpse



EAST BEDROOM



- | | | | | | | |
|--|---|---|--|--|--|--|
| <p>1</p>  <p>Pierre Frey
Johanna Headboard
Nobilis
Bargello</p> | <p>2</p>  <p>Pierre Frey
Bedding - Horizon Ohio</p> | <p>3</p>  <p>Pierre Frey
Rug - Tibere Forêt</p> | <p>4</p>  <p>Gregorius Pineo
Einarr Console (Small)</p> | <p>5</p>  <p>Gregorius Pineo
Paloma Dining Sidechair
Pierre Frey
Colette - Lichen</p> | <p>6</p>  <p>Porta Romana
Edna Lamp</p> | <p>7</p>  <p>Porta Romana
Jolly Mirror</p> |
| <p>8</p>  <p>Porta Romana
Giacometti Cocktail Table
(Verde Fantastico Top)</p> | <p>9</p>  <p>Porta Romana
Clam Shell Wall Light Small</p> | <p>10</p>  <p>Pierre Frey
Litho Stool
Pierre Frey
Baltazar Paon</p> | <p>11</p>  <p>Porta Romana
Scalloped Bulkhead</p> | <p>12</p>  <p>Pierre Frey
Curtains - Zelina Amande</p> | <p>13</p>  <p>Kayt Fitzmorris
Painting</p> | |

