



Titles of connection

By Meagan Tobin
Rocky La Fleur
Scholarship Competition
2024

Tides Of Connection

A Coastal Sanctuary For Rocky

The Brief

This design concept envisions the transformation of Rocky's Malibu retreat, focusing on the Great Room, Breakfast Nook, and Study. Rocky, a dynamic figure in the design world, cherished his connections with others as much as he valued moments of solitude and reflection. His coastal home should be a sanctuary where he can host lively gatherings and enjoy quieter, introspective times. The design will embody his love for travel, his eclectic style, and the peaceful rhythm of the ocean that laps at the shores just beyond his windows.

While I never had the pleasure of meeting Rocky in person, I've come to feel deeply connected to his spirit through countless conversations with his friends and colleagues. Rocky was a man who effortlessly blended the vibrant energy of his travels with a deep sense of community and inclusivity, especially within the design world. His vivacious personality and passion for bringing people together were as integral to him as his flair for stylish scarves and pocket squares, which added a colorful touch to his everyday life.

What particularly struck me was the juxtaposition of qualities that defined him. Rocky traveled extensively, mingling with renowned designers and artists worldwide, yet remained deeply committed to supporting students and mentoring them as the future of the design industry. Despite his impeccable fashion sense, he famously drove a Honda SUV, humorously nicknamed the "lesbian toaster." These anecdotes reveal a dynamic, fun-loving design aficionado who acted as a guiding light and bridge within the design community.

This design honors Rocky's legacy by balancing the lively, social energy he embodied with the serene, restorative beauty of the ocean. Drawing inspiration from Malibu's tranquil coastline and the rhythmic tides just beyond his windows, I sought to create a space that nurtures both exuberant gatherings and quiet introspection.

Great Room: A Space for Connection

The Great Room, the heart of Rocky's coastal retreat, is where he can host friends for lively dinners while also finding moments of

calm. The design reflects this duality, but it initially posed a challenge due to the expansive open space and numerous doorways that couldn't be obstructed. This required careful consideration in layout planning to ensure fluidity of movement while maintaining intimate, defined areas.

Anchoring the room is an Erden etched blue rug with metal inlays, which sets the tone for the palette of muted blues and sandy neutrals. Two Charlie sofas face each other, one being a sectional, creating a balanced seating arrangement that encourages conversation and connection. Complementing these are two Gregorius Pineo Montauk club chairs, upholstered in textured blue fabric reminiscent of Malibu's tide pools, offering cozy seating around an archipelago of nested metal and marble Holly Hunt Caldera coffee tables, their smooth surfaces resembling sea-worn stones.

For Rocky's love of hosting, an Ironies Majong cabinet with bone inlays becomes the social hub of the room, storing bar essentials and other entertaining necessities. At the counter, four Overgaard & Dyrman stools offer additional seating. A Holly Hunt Cive pendant, with draped glass, illuminates the dining area, casting a soft glow reminiscent of the golden hour over the Pacific. The room's palette of muted blues, greens, and sandy neutrals, contrasted with dark Gregorius Pineo table lamps and hints of black, creates a seamless connection to the outdoors, where the rolling waves are always in view.

Study: A Reflective Retreat

The Study is Rocky's personal space for solitude and creativity, a retreat where the calming presence of the ocean can be most deeply felt. Here, the design draws from Rocky's eclectic interests and contemplative nature. The study is partitioned from the Great Room by a pair of custom rattan and wood doors, allowing the space to be either opened for a seamless connection to the larger area or closed off for quiet reflection. The natural textures of the rattan and wood echo the organic elements found throughout the home, subtly referencing Rocky's appreciation for artisanal craftsmanship.

The walls are covered in a moody, textured wallcovering by Gregorius Pineo, creating an intimate and immersive environment.



Custom millwork houses Rocky's vast collection of design books, a testament to his passion for learning and mentoring. The organic shapes of the built-in bookcase are inspired by the rugged textures of Malibu's rocky shoreline, while the cabinet fronts feature hand-gouged wood textures that echo the time-worn striations of sand beneath the ocean's surface.

In the bay windows, a Pierre Frey sofa with organic curves offers a serene spot for reading or reflecting. The desk, positioned to face the expansive ocean view, is crafted from reclaimed wood, its weathered surface a nod to Rocky's appreciation for materials with history and character. A Holly Hunt Munos pulley light above the desk provides task lighting, while the overall palette of deep ocean blues, muted grays, and touches of driftwood brown evokes a sense of calm and grounding.

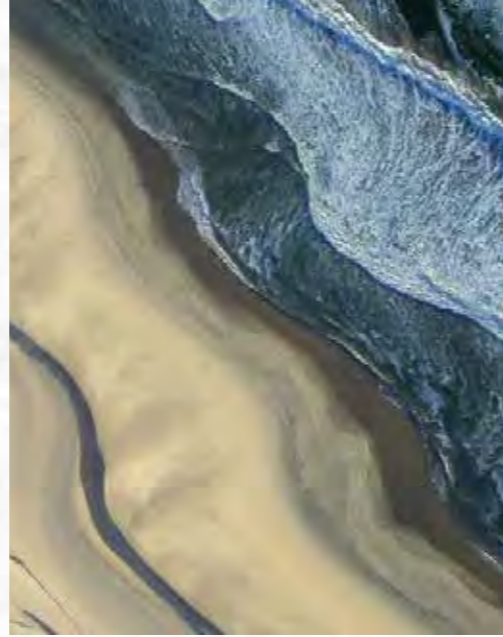
Breakfast Nook: A Coastal Morning Ritual

The Breakfast Nook is where Rocky starts his mornings, sipping coffee and watching the early light dance across the waves. Designed to be both intimate and open, this small sunlit space is surrounded by windows that flood the room with natural light, offering uninterrupted views of the Pacific.

The Gregorius Pineo Tahoe dining table with a walnut oval top anchors the nook, paired with a custom organic banquette that invites cozy seating. Above, a Hilliard's Rainier chandelier casts a warm, inviting glow over the table. The palette in this space is warm and natural, featuring sun-kissed yellows, soft whites, and a mix of wood tones that create a light, airy feel in harmony with the morning sun.

In essence, this Malibu retreat embodies both "Tides of Connection" and Rocky's dynamic personality—a home where the natural beauty of the coast meets the vibrant energy of community. It is a sanctuary where Rocky can entertain and recharge, reflecting the ebb and flow of life and relationships, much like the ocean outside his window. This home serves as both a tribute to the vibrant, multifaceted life Rocky led and a serene space for creating new memories.

wood board



Great Room Seating Area



1 | Living Area Elevation
Scale: 3/8"



Great Room Floor Plan
Scale: 3/8"

Great Room

Dining Area



Chair COM
Oia #10935.69
Nobilis



2 | Dining Area Elevation
Scale: 3/8"



Great Room Floor Plan
Scale: 3/8"

Study

Sofa COM
La Vague NO. ZFLVGOP-05
Zak & Fox

New York Sofa
Pierre Frey

Monos Pulley Pendant
Holly Hunt

Drapery COM
Byblos #10845.38
Nobilis



2 Nove Floor Lamp
Gregorius Pineo

3 Danois Side Table
Gregorius Pineo

Chair COM
Scribe
Kerry Joyce Textiles

4 Litho Chair
Pierre Frey

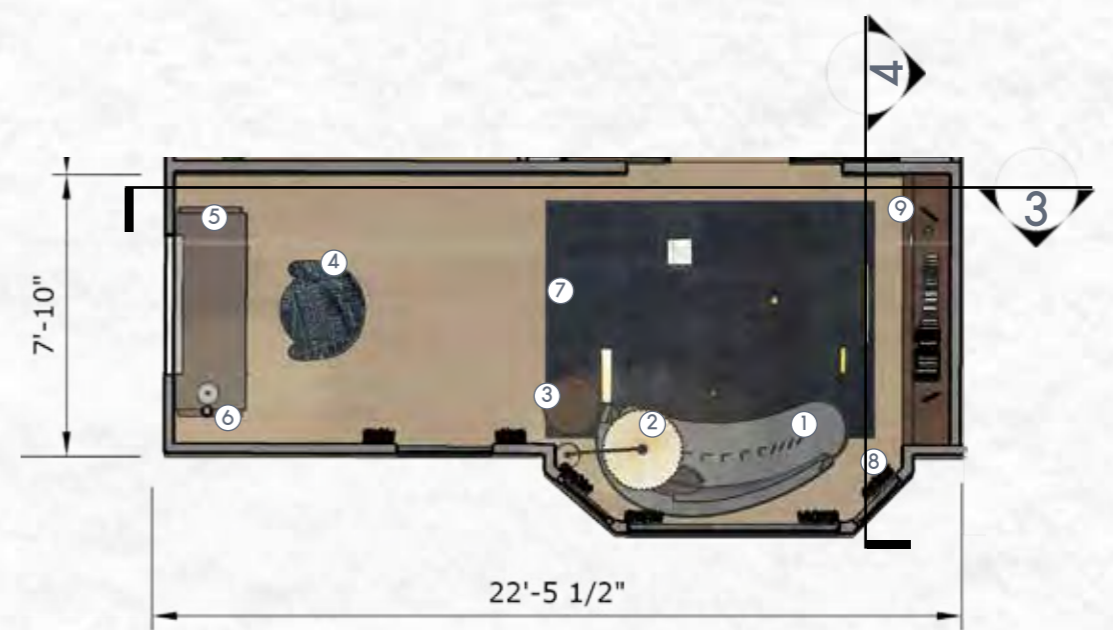
5 Scribe Desk
Holly Hunt

7 Notation Abstraction Dark
Blue Grey
Erden

Wall Covering
Glint GL-787 / Night Sky
Grehorius Pineo



3 | Study Elevation
Scale: 1/2"



Study Floor Plan
Scale: 3/8"



Custom Millwork
Finishes



4 | Millwork Elevation
Not To Scale

Study

Breakfast Nook



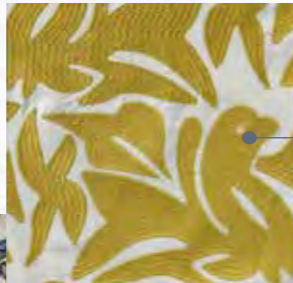
Com @ Banquette Back
Mazan NO. ZFMZ-02
Zak & Fox



③ Custom Banquette



Com @ Banquette Seat
Bella Pelle - Denim
Jerry Pair Leather



Pillow 1 COM
Frida #10582.30
Nobilis



Pillow 2 COM
Les Inseperables #10581.60
Nobilis

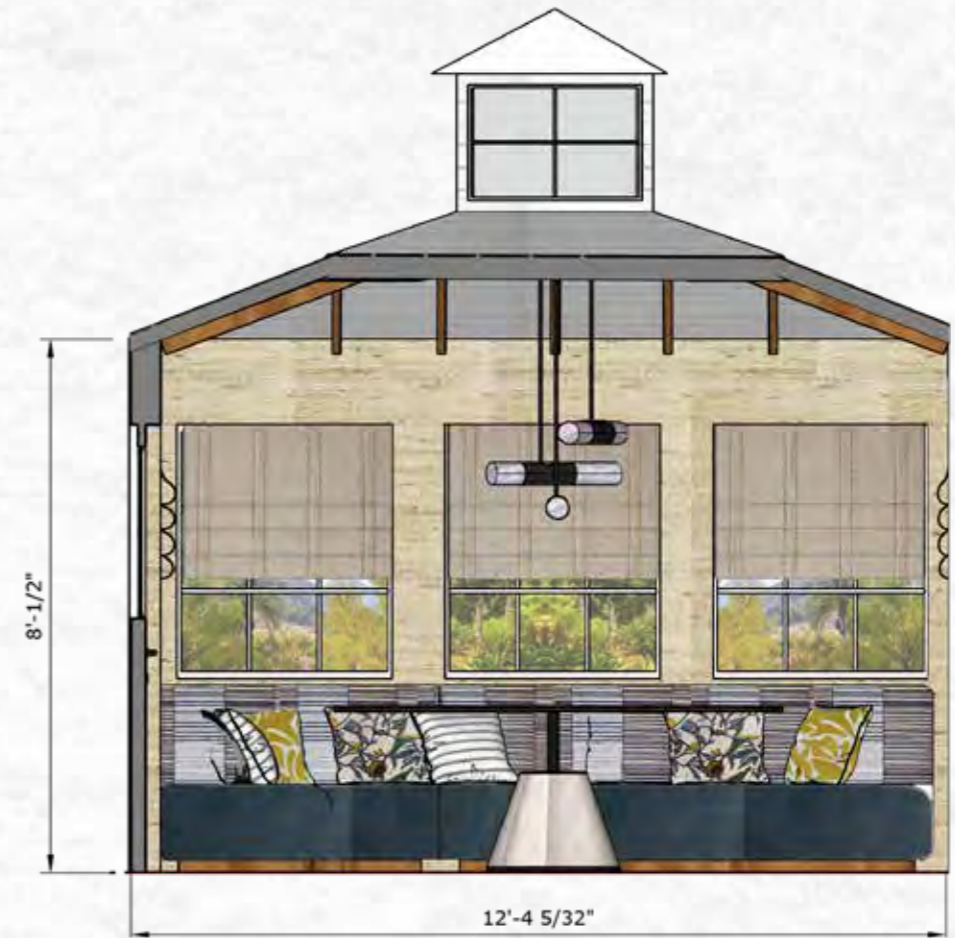


Wall Covering
Arrowroot ARW-401 / Husk
Gregorius Pineo

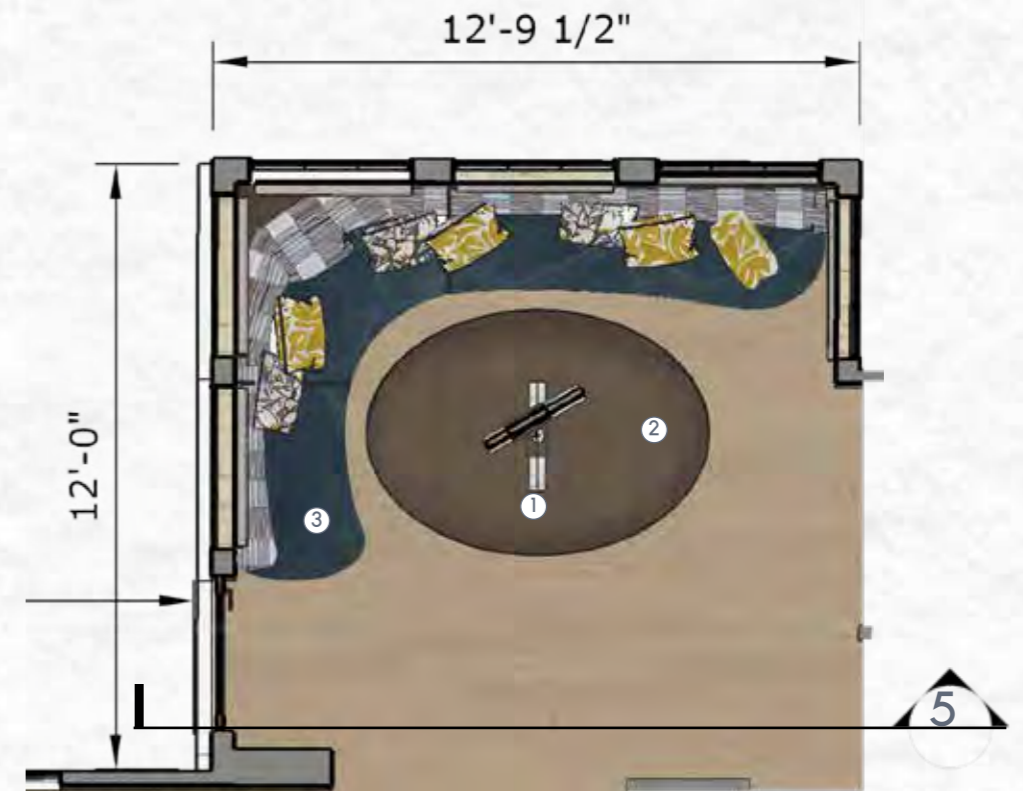
① Raineier Chandelier
Lamps By Hilliard



② Tahoe Dining Table
Gregorius Pineo



Breakfast Nook Elevation
Scale: 3/4"



Breakfast Nook Floor Plan
Scale: 1/2"

Thank
you!

meagantobin@gmail.com