

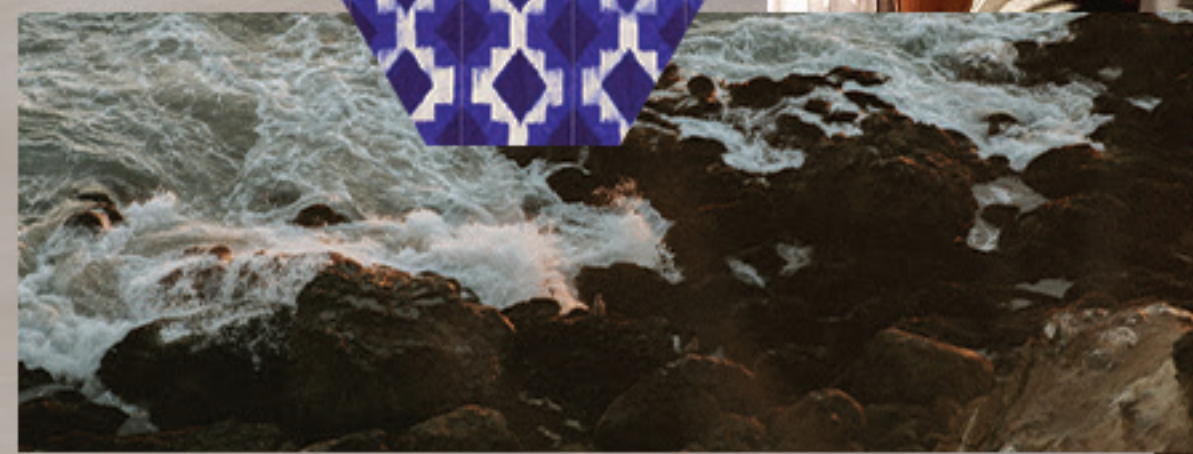


Earthy Coastal House

Rocky La Fleur Scholarship Entry
Kneedler Fauchere

Sabrina Termini
September 22, 2024

MOOD BOARD



CONCEPT STATEMENT

Concept Statement

Rocky's charming Earthy Coastal Beach House takes inspiration from the rocky California coast and is a place where Rocky can relax, whether alone or with the company of his friends. Located in a California coastal town, Rocky's hideaway is surrounded by mountains and is close to rugged shores of the Pacific coast. The sea breeze wafts through the house, where Rocky can enjoy a warm beverage in his Breakfast Nook, read a book in the Great Room, and prepare for his next work trip making connections across the globe in the Study. Ever the social host, Rocky frequently welcomes a number of guests and can host breakfasts in the Breakfast Nook, entertain dinners in the Great Room, and interest clients in the study. Rocky's Earthy Coastal Beach House will be a refreshing destination for both Rocky and his guests.

In terms of design ideas, the colors draw from the local California landscape. Warm beiges, dark browns, olive greens, and oceanic blues form the palette. It is a moody departure from what I typically think of in terms of a beach house, and I wanted to try something new. Rocky beaches are beautiful and dramatic with their jagged deep brown cliffs, jutting into the crashing deep blue waves of the Pacific ocean, and it is also a nod to Rocky's name. Conversely, part of what makes California's coastline along the Pacific Coast Highway so awe-inspiring is the mountains. Its soil is often a subdued beige. Muted green plants sprinkle the landscape. Rocky's Earthy Coastal Beach House incorporates each of these landscapes, but in a different way in each room. The Study is more in the ocean theme with its deep blue wallpaper, while conversely, the Breakfast Nook features strictly earth tones. The Great Room represents where the sea meets the earth and incorporates the entire palette range. From the warm beiges to the deep blues and olive greens, this beach house is connected to the landscape that it calls home.

As the beach house is designed with Scandinavian and French Colonial influences, Rocky's Earthy Coastal Beach house seeks to honor both those styles as well. The charming windows remain and Scandinavian furniture is specified throughout the space. From Muuto, the Wrap Lounge Chair and Earnest Extendable Dining Table are featured in the Great Room. Also in the Great Room are Bolia's North Sofa and Mix Occasional Coffee Table. The display cabinet in the Study is from Scandinavian Spaces. Using Scandinavian furniture and keeping the windows honors the Scandinavian and French Colonial influences of the beach house.

Starting the day, Rocky will be using the Breakfast Nook as a place to enjoy his morning cup of caffeine and clear his headspace to prepare for the day. As such, the Breakfast Nook's color palette includes warm beiges, browns, olive greens, and orange. All are colors and materials inspired by a sunrise hike in Malibu, and the Breakfast Nook is designed on the "earthier" side of the earthy coastal beach house. One of the prominent patterns used in the Breakfast Nook is "Orangerie" by Zak and Fox. Orange Groves are a part of Southern California's history and used here, they also connect to a common breakfast beverage, orange juice. Dining among the oranges, Rocky can enjoy his orange juice and enjoy a nod to California's history. A warm beige tile adorns the floor, taking inspiration from the area's soil. Just as a California sunrise is optimistic and hopeful, the Breakfast Nook is designed to inspire a good start to Rocky's day.

For the floor plan, I wanted to create a space that Rocky could enjoy on his own or with guests. If Rocky were hosting a number of overnight guests, they could use the Great Room table, however I wanted to create a space where a moderate number (2-4) people could gather for breakfast as sometimes people start their days at different times. Two to four of Rocky's guests and himself can trickle down to the Breakfast nook, take a seat on the breakfast nook bench, and enjoy a stack of pancakes with a view of the ocean.

Some of the custom pieces in the Breakfast Nook include the planter and the breakfast table. Designed to look like a slice of tree and driftwood, the Breakfast Nook planter creates an earthy feel and brings some greenery into the space. The breakfast table's base has organic lines, much like the lines that one finds in ocean waves, topographic lines, trails, and tree branches. Both custom pieces are inspired by the area's mountains and rocky coastlines.

Some of the design challenges involved in the Breakfast Nook include paths of travel and thinking about how the space will be used best. I initially placed a table in the center of the room, however, it interfered with the path of travel from the hallway and outdoors to the kitchen. Creating a bench in the back of the Breakfast Nook alleviates this challenge and creates a smoother flow from one location to another. It was also difficult deciding how

CONCEPT STATEMENT (CONTINUED)

many people should be able to sit at the bench. Some people like to get up earlier and later than others. As such, if people are coming at different times, the Breakfast Nook would be better suited for a smaller number of guests at a time so it is more intimate. If there is a large planned breakfast, the dining area in the Great Room can be used. Seating less people, I was able to fit some “green space” in the breakfast nook by designing a planter. Adding plants to the Breakfast Nook creates a more refreshing start to the day. Both design challenges were solved through the use of a small bench.

Moving to the Great Room, it not only represents a meeting of the ocean and mountains, but it is also meant to be the primary meeting place for larger size gatherings that Rocky loves to host. It is divided into two areas. There is a “living room-like” area, which can seat up to five friends, and there is a dining area, which can seat up to ten guests. One of the design challenges involved in designing the Great Room was the understanding that oftentimes Rocky will be using the space solo and will not be hosting all the time. As such, it was important to make sure that the space is comfortable to use when Rocky is with guests, but also alone. Rocky can enjoy his alone time by relaxing with a book or looking out at the view on the custom bench by the window, designed to seat primarily one person, or two people at most. It also has storage underneath. The Muuto Earnest dining table is extendable and is meant for six people on the lower end and ten people if extended to full capacity. This feature means that it can accommodate Rocky’s parties of various sizes. The Great Room is a relaxing space that is pleasant for groups or alone time.

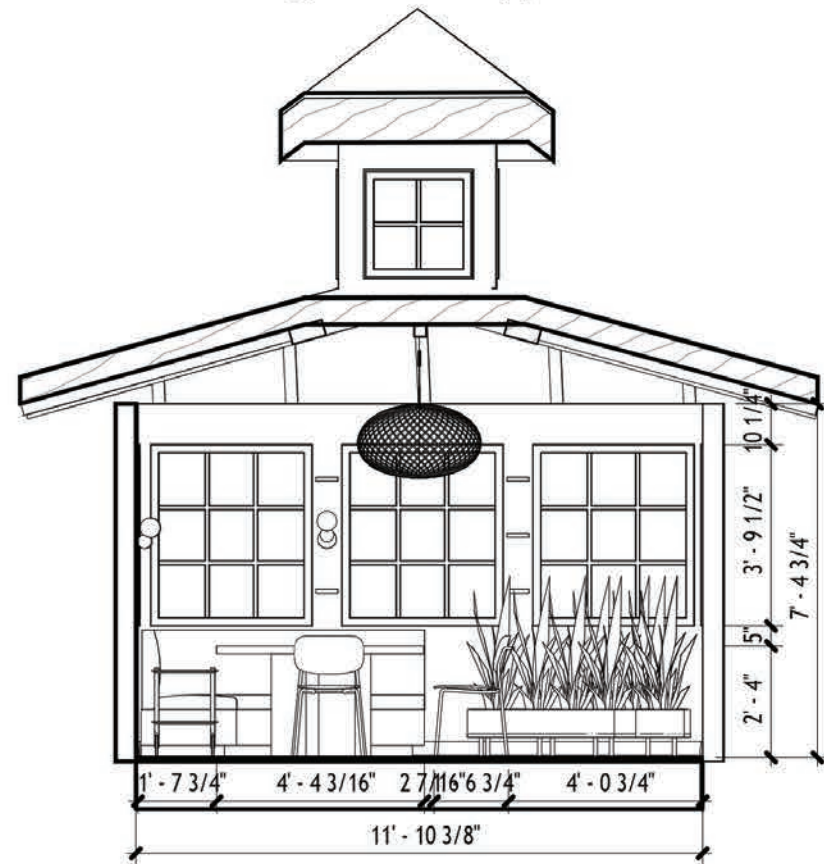
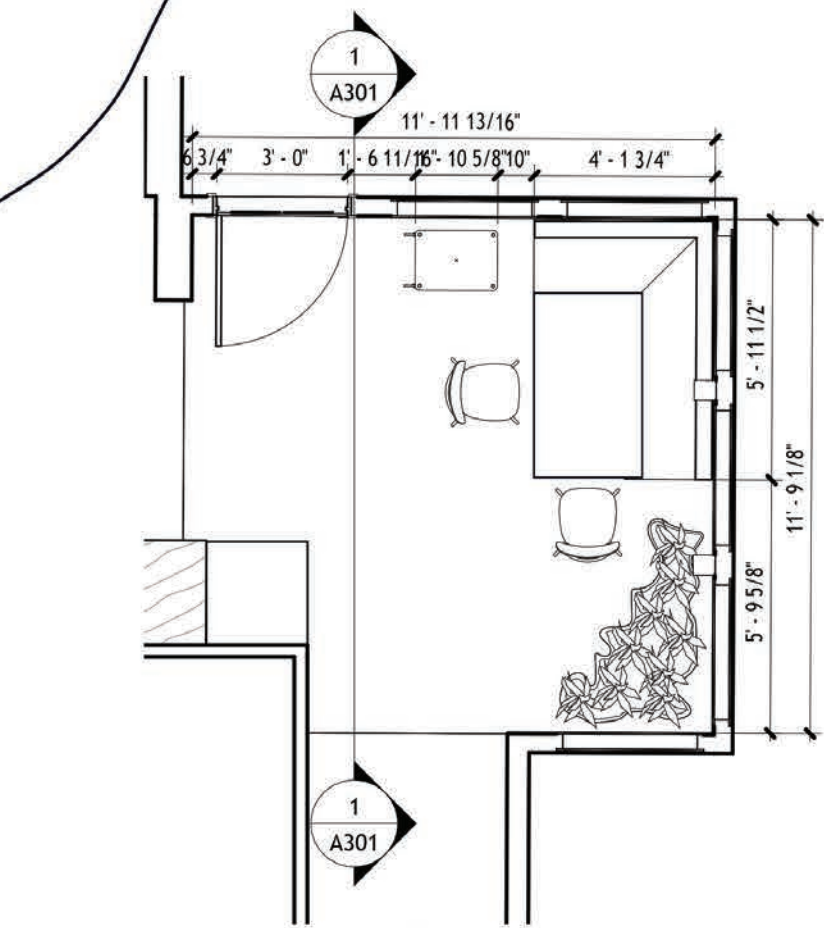
Several Kneeder Fauchere products are used in the Great Room to create a place of comfort and drama. Located in the dining room in the shape of a wave, Zak and Fox’s “Il Vespro” is a gorgeous dark green that creates a sense of formality while still being playful. The wallpaper features constellations that one might find on a dark night on the beach. Kerry Joyces’s “Verge” is a textile used on the BlueDot Tangent Lounge Chair. Dark blue lines on a light beige background mimic organic lines found in nature on this Irish linen. The striking bright blue textile on the couch comes from Pierre Frey’s Haiku in Majorelle. While it may not be as deep as the ocean itself, it is a reminder of the various depths of sea.

Moving along into the study, Rocky will primarily be using this space to work and prepare for upcoming showroom visits, however it will also be used to entertain current and potential clients. To meet both needs, there is a Steelcase desk that Rocky can use at sitting height or standing height. A number of custom seashell inspired shelves adorn the walls where Rocky can display his various souvenirs and memories from his travels or Kneeder Fauchere products that he would like to showcase. There is also ample storage in the study with two shelves and a custom shelving display near the entrance with hidden storage. Rocky can go over products with clients on the bench near the window where they can admire the view and new products.

One of the design challenges from the Study was that it is a small and narrow space. To make the space seem larger, I used a dark wallpaper. As a cool, dark color, the wallpaper makes the small space appear larger. I also used the “cut-outs” in the space for seating and storage so that the remaining space could be left open or used for small furniture items. Both of these design solutions solve the problem of a small space.

A few Kneeder Fauchere products used in the Study include the wallpaper and a textile. Zak and Fox’s “Alga” wallpaper is a deep dark blue inspired by the ocean. Its lines are designed after fronds and seaweed found in tidepools near the coast and makes for a moody oceanic study. Holly Hunt’s “Wave” in “Bay Blue” is meant for Rocky’s task chair and is reminiscent of moving, swirling waves. Both products bring out the sea in the Study.

In designing Rocky’s Earthy Coastal Beach House, I wanted to create a space that was moody, inspired by the area, accommodating for multiple uses and above all, comfortable. Through its warm and deep tones, high contrast colors, jagged lines, and organic shapes, this beach house is inspired by the drama of the Pacific Ocean Californian coast. Rocky can enjoy this space alone through the lounge bench in the Great Room or with parties of various sizes through his extendable dining table. In the study, he can study alone, or sit with a friend. With its flexibility and nature-inspired design, Rocky’s Earthy Coastal Beach House is one that he can enjoy for years to come.



Breakfast Nook
1/4" = 1'-0"



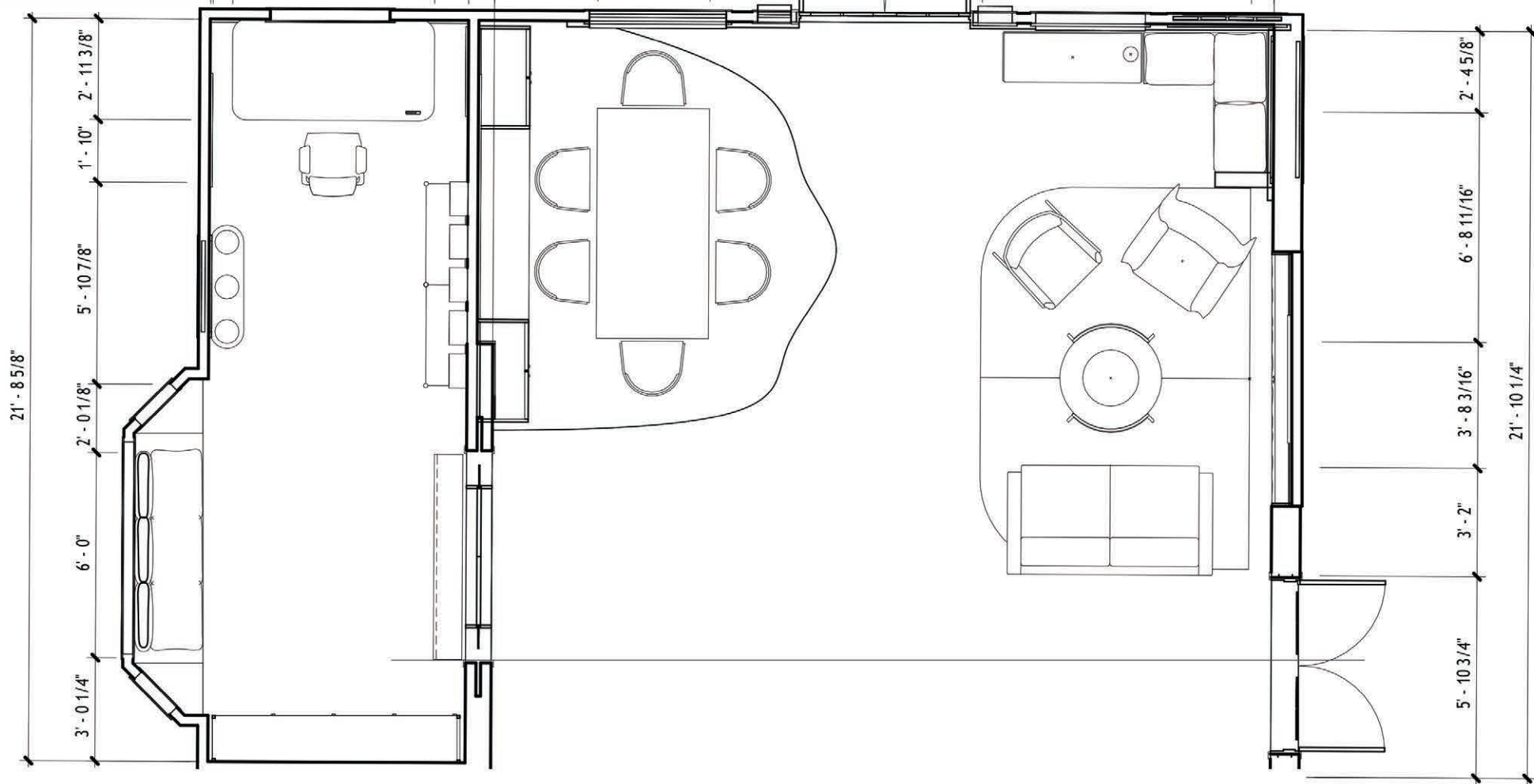
BREAKFAST NOOK PLAN/SECTION



BREAKFAST NOOK RENDERING



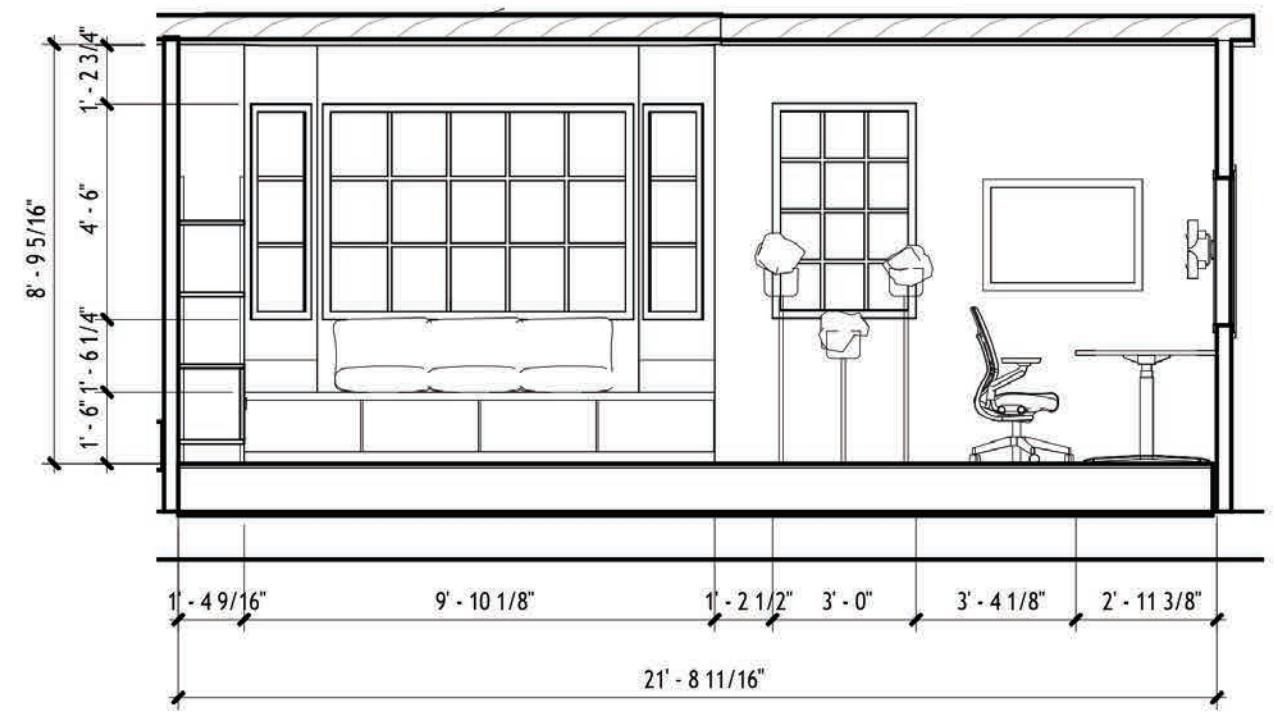
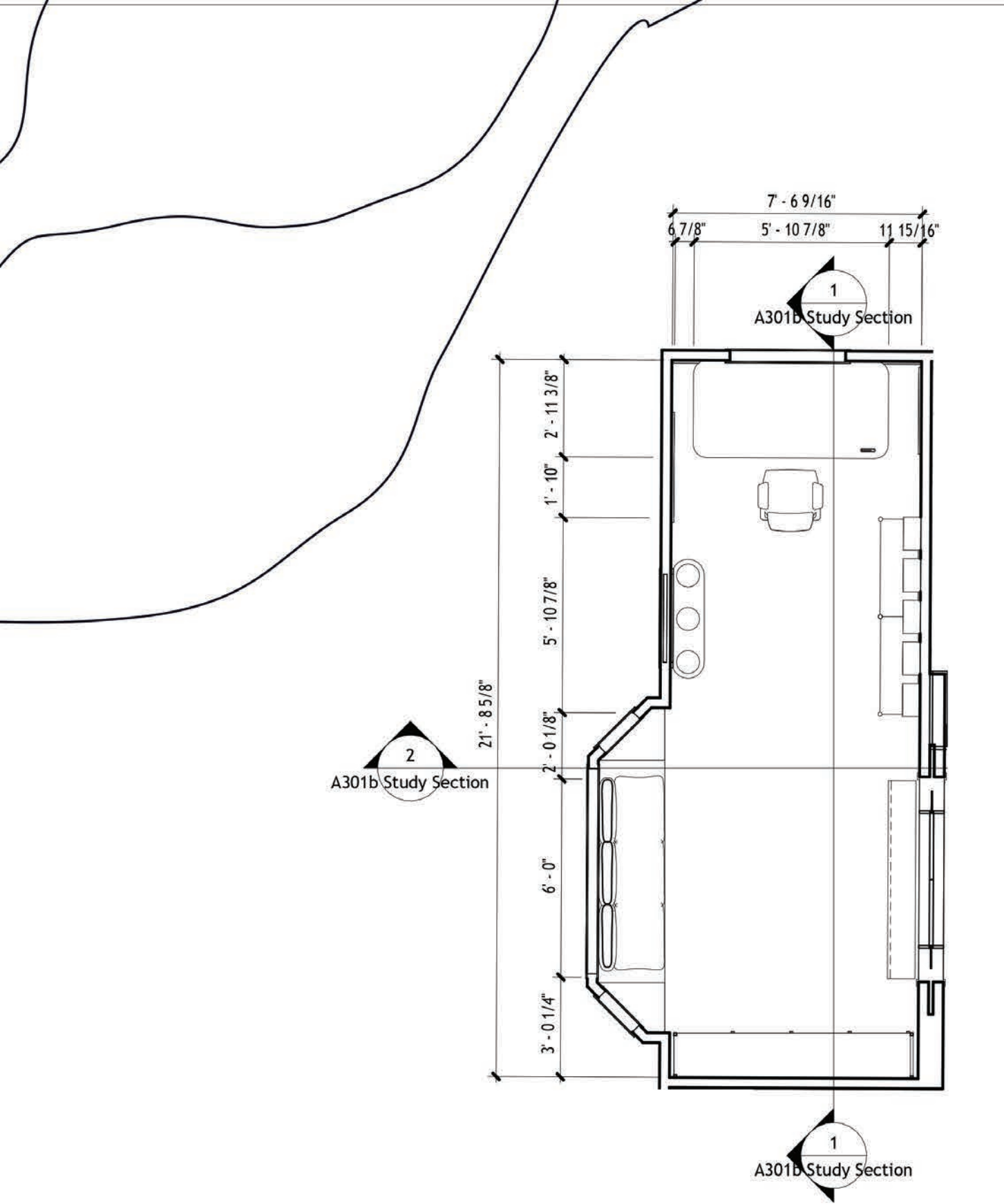
3 Section 5
1/4" = 1'-0"



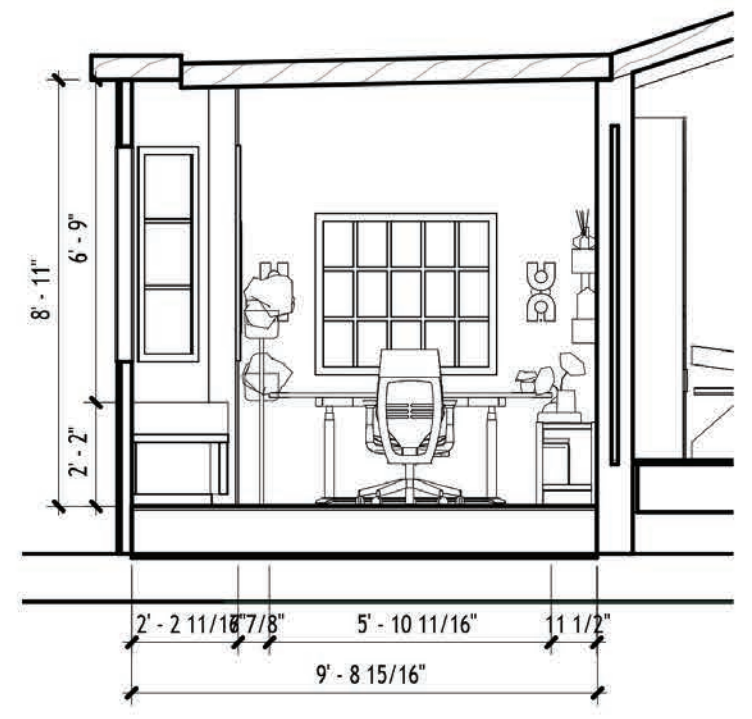
GREAT ROOM PLAN/SECTION



GREAT ROOM RENDERINGS



① Study Section
1/4" = 1'-0"



② Study Section 2
1/4" = 1'-0"

STUDY PLAN/SECTION

THANK YOU!



STUDY RENDERING