

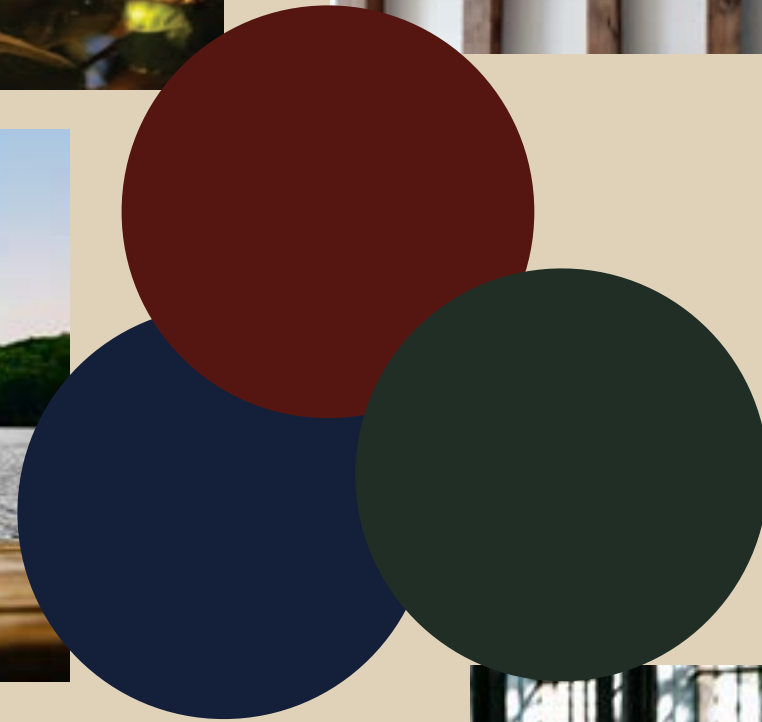
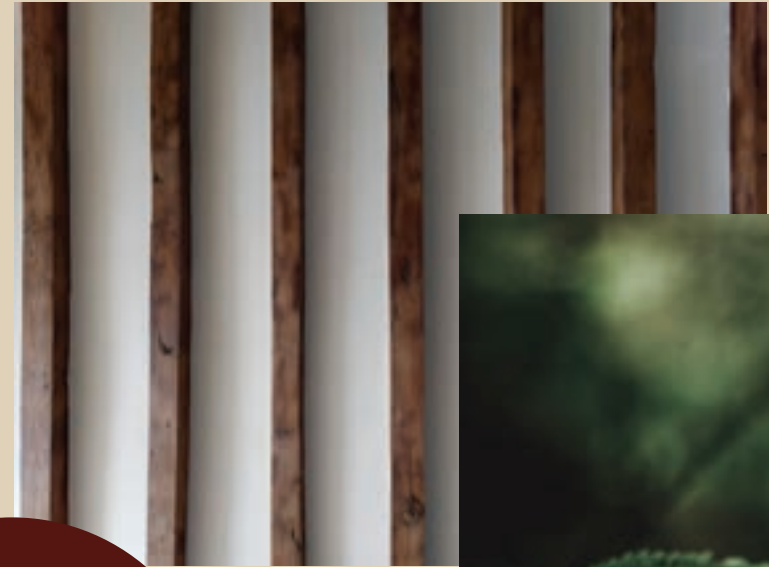
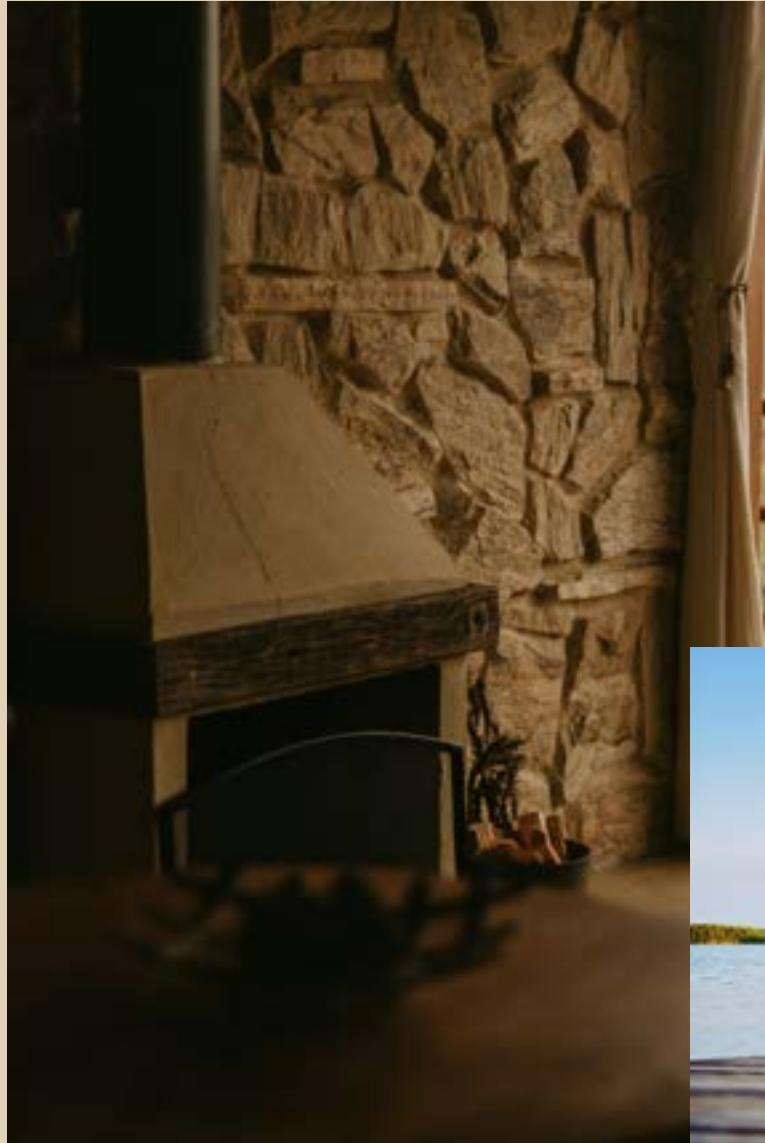
# THE Gathering Place



By Anne Kristobak  
Rocky La Fleur Student Competition 2025









# Concept Statement

## A Home Away From Home

Dark summer nights, the sky full a thousand sparkling stars, cicadas humming in the trees; crisp fall days, the warm sun trickling through orange and yellow leaves fluttering in the breeze; cozy evenings by the fire while snow falls gently outside; hopeful spring mornings as the birds return and start singing again. The Gathering Place is a space for all seasons. Situated on a lake in the Midwest, this home is for Rocky's family to celebrate big and small occasions, to take time away from busy lives and reconnect with what really matters.

The lake house is a home away from home for Rocky and his extended family. I drew inspiration from the Midwest's Scandinavian roots and the architecture of the house, reminiscent of English homes with their pitched roofs and large windows.

This home will accommodate Rocky's large family, including the very young, as well as older adults, all with varying physical abilities. Keeping the layout simple and egresses clear ensure that everyone can move about these spaces with ease. I sourced contract grade furniture for the Great Room and Dining Alcove, assuring these pieces can stand up to wear and tear and can be enjoyed for years to come. Smooth edges and performance fabrics also make these spaces stress-free and easily cleanable.

## The Great Room

The Great Room and Dining Alcove incorporate natural materials like wood beams, floors, and trim, and plaster walls, consistent with Scandinavian design. The plaster walls absorb sound and are a durable option for this frequently-used space. Blue, green, and brown hues in the furniture and textiles create a sense of calm. Simplicity in design is balanced with playful upholstery and drapes. Furniture sourced from Caste, designed by Ty Best in Montana, showcase regional handcrafted pieces alongside others sourced from Holly Hunt.

The floor offered a canvas for highlighting Rosemaling, a traditional Norwegian style of painting comprised of flowing brushstrokes, scrolls, and flowers, inspired by the Rococo style in France. The floor contains a custom wood inlay with a Rosemaling design at both doorways. It is complimented by a floor border around the room, which defines the large space. Both of these custom floor designs were made in the Midwest by local craftsmen. Drapes in Kerry Joyce's Charlotte fabric with a delicate floral pattern echo the Rosemaling design. Edith wall lights by Porta Romana highlight the windows and offer a soft glow. The small floral detail on



these lights compliment the rest of the room. Holly Hunt's Rhone sofa anchors one end of the seating area, upholstered in Kerry Joyce's Adagio velvet in a light blue-green. Holly Hunt's No. 27 chairs and Percheron chairs define the remaining seating area, upholstered in Pierre Frey's Maarta fabric and Zak + Fox's Oyo fabric, respectively. Opposite the sofa sits Caste's Pouf in walnut. I thought this would be a playful, interesting piece that would spark conversation and make the living area less formal. Holly Hunt's Mojave cocktail table will create space for morning coffee, books, and perhaps the occasional Lego build. A custom-sized Zak + Fox's Sou wool rug in a off-white will define the seating area and adds softness underfoot while also being durable and stain-resistant.

## The Dining Alcove

To preserve the stunning lake views from this space, I sourced Caste's Loring hanging light, which provides plentiful light for dining but does not take away from the scenery. Drapes in Zak + Fox Shinji fabric depicting a playful scene with foxes and flora and fauna. It reminds me of the textiles by Marta Maas Fjetterstrom and her playful, colorful patterns depicting the Swedish countryside. The Trice dining table by Holly Hunt can seat eight comfortably, ready for larger family events. Caste's Buell dining chairs add additional wood texture and warmth.

## The Study

Contrasting with the light walls and expansiveness of the Great Room, the Study contains dark wood paneling and saturated hues, making it feel cozy and sophisticated. I wanted to make this room a retreat for Rocky - an occasional hide-out and a space to work. Above the wainscoting hangs Nobilis' Canopy 2 which gives the room pattern and interest. The mural depicts forests in Europe, complimenting the view outside of the study. The elegant Holden ceiling light by Porta Romana, hangs from the coffered ceiling, a traditional but relaxed fixture. Holly Hunt's Stilt Coupe lounge chairs upholstered in Pierre Frey's Teddy Mohair comprise the seating area in front of the fireplace. The chair's silhouette is modern and sophisticated, fitting for the study. Beautiful, tall windows define the South wall. Custom roman shades in Sean Leffer's Neist Point fabric give the space a traditional English feel. Beneath the windows, a custom built-in bench and seat cushion upholstered in Zak + Fox Janas fabric offer a plush space to read a good book or take in the view outside. On the East wall, a Holly Hunt Scribe desk and Aileron chair provide a space for Rocky to work. Porta Romana's Thera wall lights flank the desk.

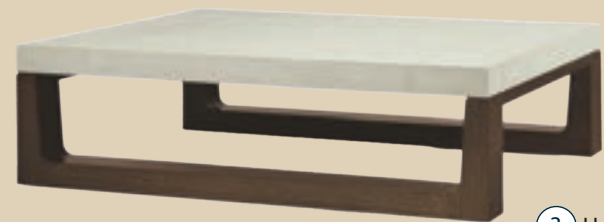
# THE Great Room



1 Caste Pouf in Walnut



2 Porta Romana Edith Wall Light

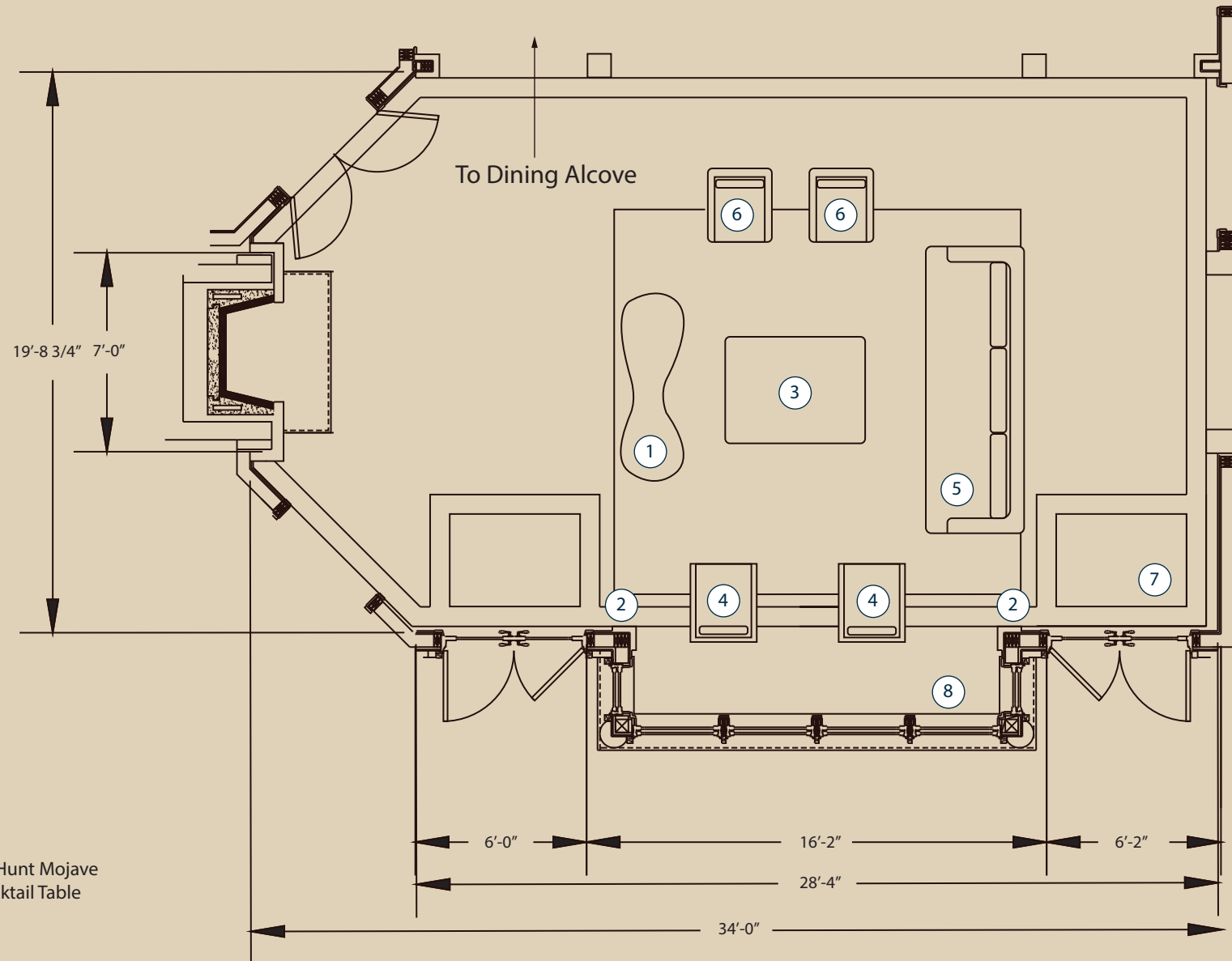


3 Holly Hunt Mojave Cocktail Table



4 Holly Hunt No. 27 Chair

Zak + Fox Oyo  
ZFOY-01



Great Room Floor Plan



5 Holly Hunt Rhone Sofa



Kerry Joyce Adagio  
Velvet in Blue Pearl



8 Drapes in Kerry Joyce  
Charlotte Indigo



7 Custom wood in-lay floor border  
and Rosemaling design



6 Holly Hunt Percheron Chair

Pierre Frey Maarta  
in Baltique

ADK





Great Room South Elevation

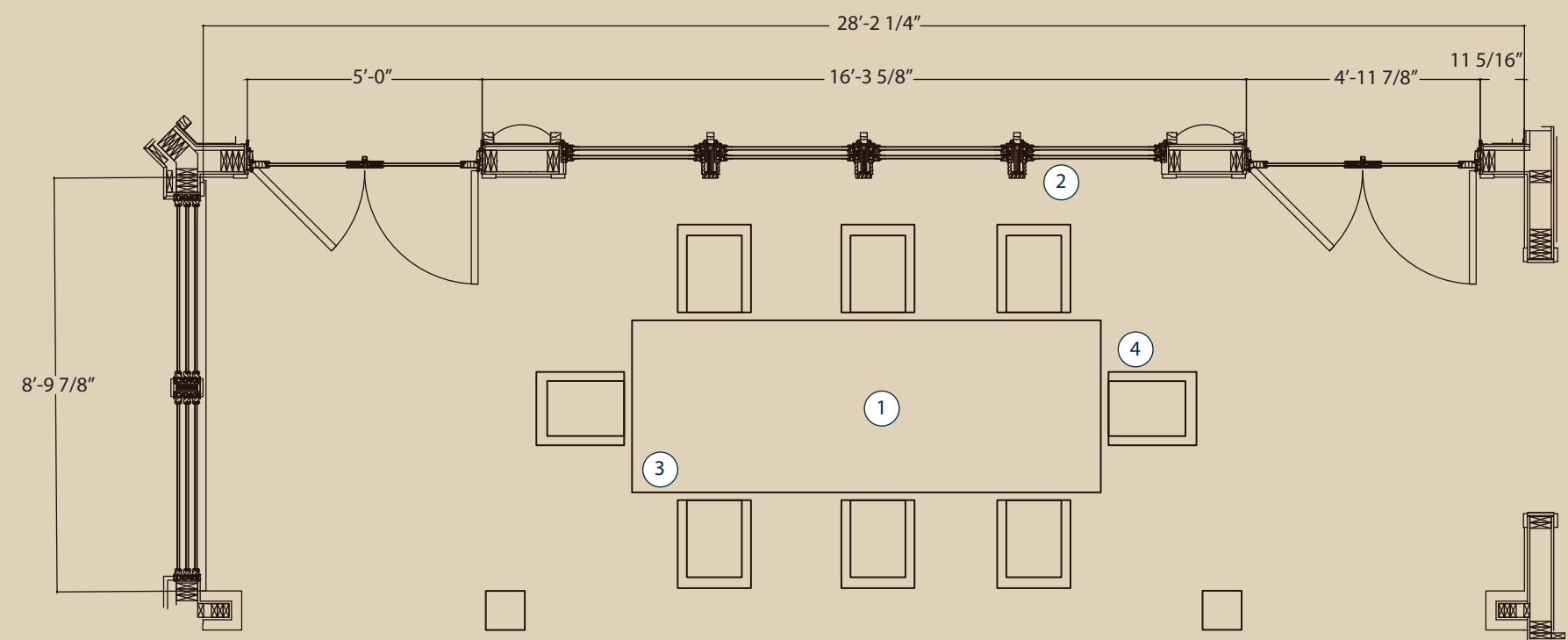


Great Room West Elevation





# THE Dining Alcove



Dining Alcove Floor Plan



Dining Alcove North Elevation



1 Caste Loring Hanging Light



2 Zak + Fox Shingi in ZFSHNWV-01



3 Holly Hunt Trice Dining Table in Oak Espresso



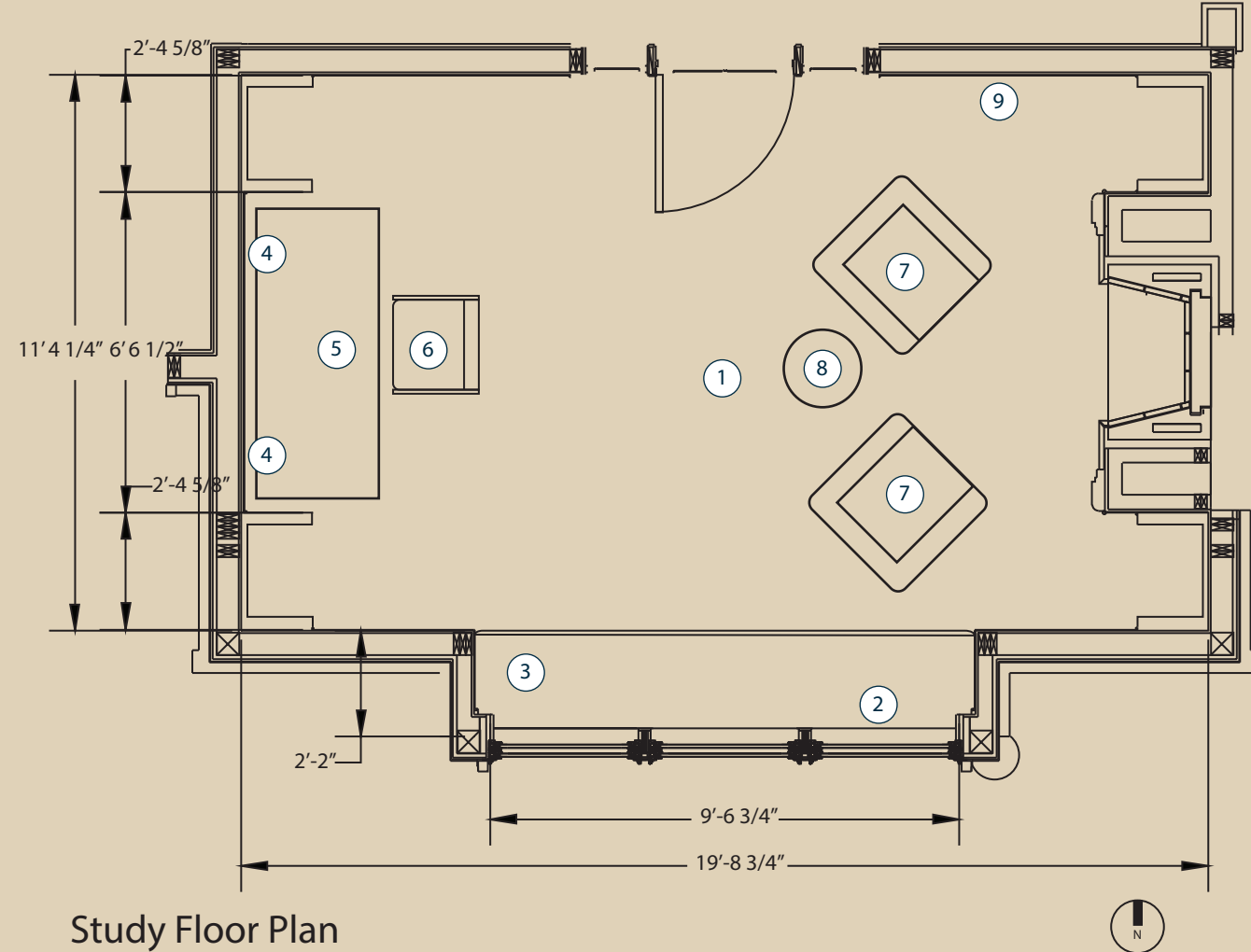
4 Caste Buell Dining Armchair in Light Walnut







# THE STUDY



Study Floor Plan



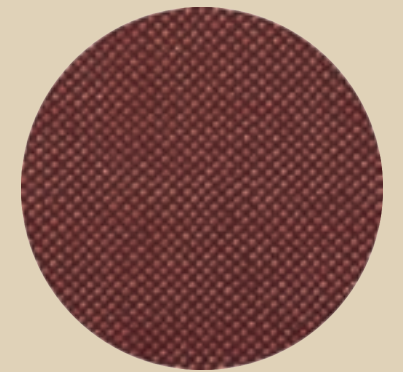
Study West Elevation



1 Porta Romana Holden Ceiling Light



2 Custom Roman Shades in Sean Leffers Neist Point



3 Upholstered Window Seat Cushion in Zak + Fox Janas



4 Porta Romana Thera Wall Light



5 Holly Hunt Scribe Desk

6 Holly Hunt Aileron Chair



Pierre Frey Teddy Mohair in Mousse



7 Holly Hunt Stilt Coupe Lounge Chair



9 Nobilis Canopy 2



8 Holly Hunt Martini Side Table

