



Cabin
Le Fleur

Katie Parkins





The concept:

Rocky La Fleur is beloved for his remarkable ability to forge meaningful connections, between people, places, and ideas. Whether through art, design, or community, his work has always been about bringing things together with warmth and purpose. Originally from South Dakota, Rocky built his professional life in Los Angeles, where his creative energy and charm made him a central figure in both design circles and social ones.

His lakeside cabin presents a return of sorts: an intimate exploration of how time, travel, and a life in design have reshaped his creative instincts. The space subtly blends folk-art traditions, with nods to the Arts and Crafts movement, while also drawing from a cleaner, more contemporary sensibility reminiscent of mid-century design. The cabin's design embraces a rustic, rural spirit, and honoring the simplicity and imperfection of handcraft, weathered materials, and lived-in textures. Wide plank floors and raw wood surfaces, evoke a sense of folk tradition, while the layering of collected objects and thoughtful details speak to a life steeped in storytelling. It's a reflection not only of Rocky's evolving aesthetic, but of his enduring joy in building community, now set against the quiet backdrop of the Midwest he came from.

Gathering space

A large focus was placed on family, durability, and comfort in the design. I intentionally kept walkways wide to allow for easy movement, and created open spaces for all ages to gather and play. The vaulted ceilings, clad in oak beadboard, offer a breath of fresh air and welcome a crowd with ease. At the heart of the gathering space is a large stone fireplace, over-grouted for a rustic, textural feel, with a herringbone brick firebox and a reclaimed wood beam mantel. Custom art anchors the fireplace as a focal point, bringing a personal, expressive touch to the room. The floors are finished in rustic gap-board, chosen for the way they'll patina beautifully over time, while the tongue-and-groove wall paneling in warm stained walnut helps bring the tree-covered exterior indoors. Reclaimed wood beams throughout the space provide both structure and style. The color palette blends warm wood tones, soft blues, muted reds, and hints of yellow, creating a layered, inviting atmosphere. Generous windows drench the space in natural light and frame the lake view, making the room feel bright, open, and connected to the surrounding landscape.

The Dining alcove

The dining room sits off the kitchen, allowing for easy access during mealtime. To break up the rectangular geometry of the alcove, I chose Gregorius Pineo's Hansen table in a custom 7-foot size. Finished in a deep red crackled lacquer, it brings playfulness and color to the space. The large size accommodates 10 seats, a challenge Rocky will have no trouble solving. To complement the rustic nature of the walls, I paired the table with Gregorius Pineo's Chiswick woven dining chairs, which subtly reference the outdoorsy campaign style. The cushions are made in a striped green linen/cotton blend fabric by Jim Thompson. On top of the table sits a Georg Jensen bloom vase, adding a modern element to the space. The windows are dressed in a blue and cream ditsy floral fabric by Clarence House, and the ceiling is wallpapered in a beige striped fabric. The mix of patterns adds lightness to the room. On the walls hang Porta Romana's Crawford sconces, finished in old rust, with custom woven basket lampshades by Midwest artist Cathryn Peters.

The Living Room

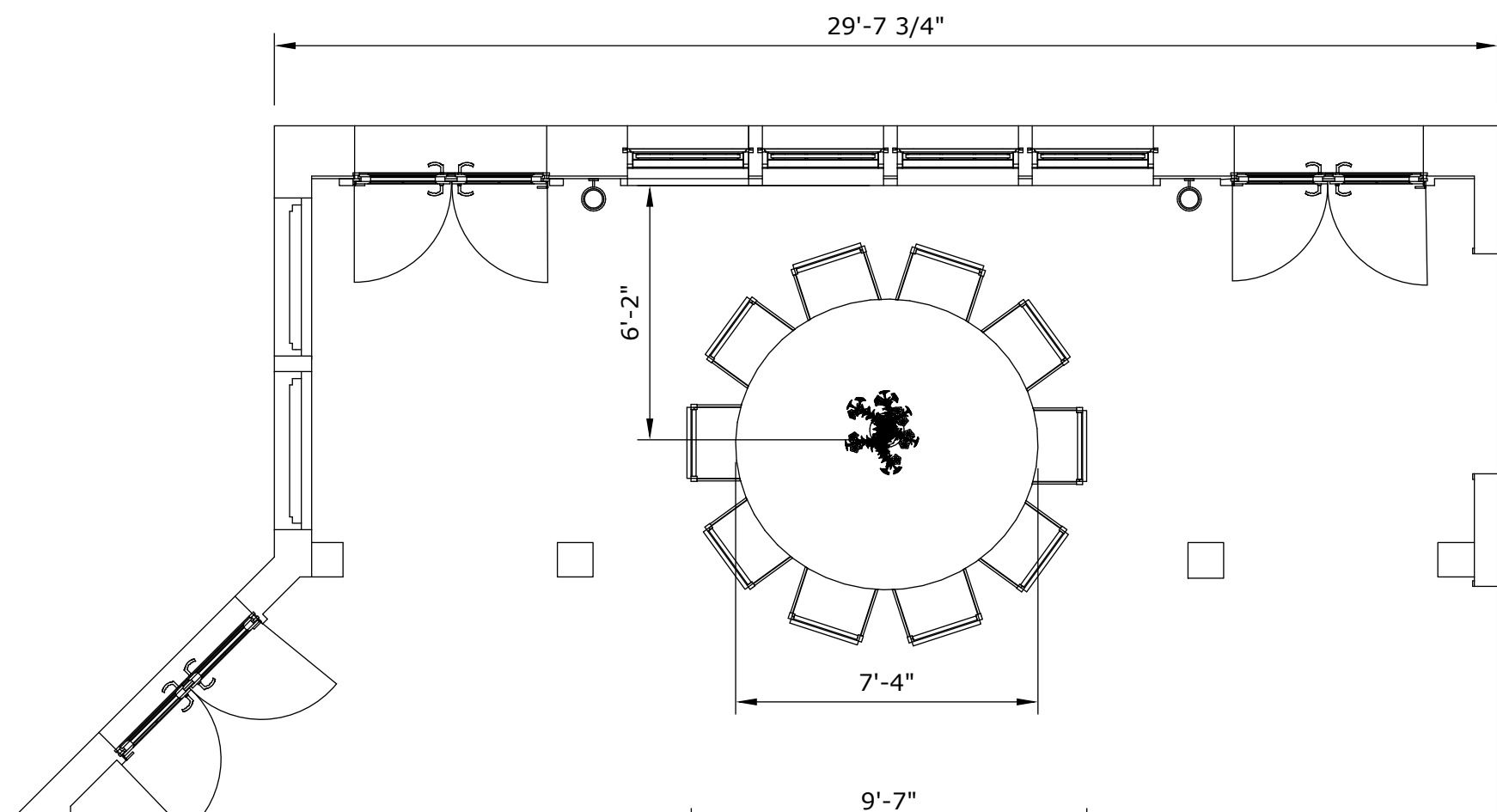
As the main gathering space in the house, it was important that as many people as possible could fit here comfortably. The best part of a family vacation is time spent in the living room, chatting or playing games. Pattern mixing was a key design focus, both to add playfulness and to help hide the natural stains that come with high-traffic environments. The sofas are custom Lawson Fenning, over 9.5 feet long to accommodate larger gatherings, boldly clad in a blue and brown gingham fabric by Zak and Fox. As a nod to Rocky's California roots, the Lawson Fenning San Rafael lounge chairs are upholstered in a subtle striped red and cream Zak and Fox Baratillo fabric. The coffee table is Pierre Frey's Milo, a sleek design that brings a modern touch to the space. Behind the couch sits the Venetian console table by Ironies, topped with the Ridley lamp in plaster white by Porta Romana. The rug is generously sized, muted but still playful, in Zak and Fox's biscotti fabric. The Roman shade fabric features a block-print floral pattern in muted red tones, tying together red accents throughout the room. The highlight of the gathering space is the Evelyn Ackerman wall tapestry; Ackerman was a mid-century modern artist from Los Angeles, known for her California folk art. On the mantel sit artwork by Brittney Ferns and a custom sculpture by artist Aude Herledan.

The Study

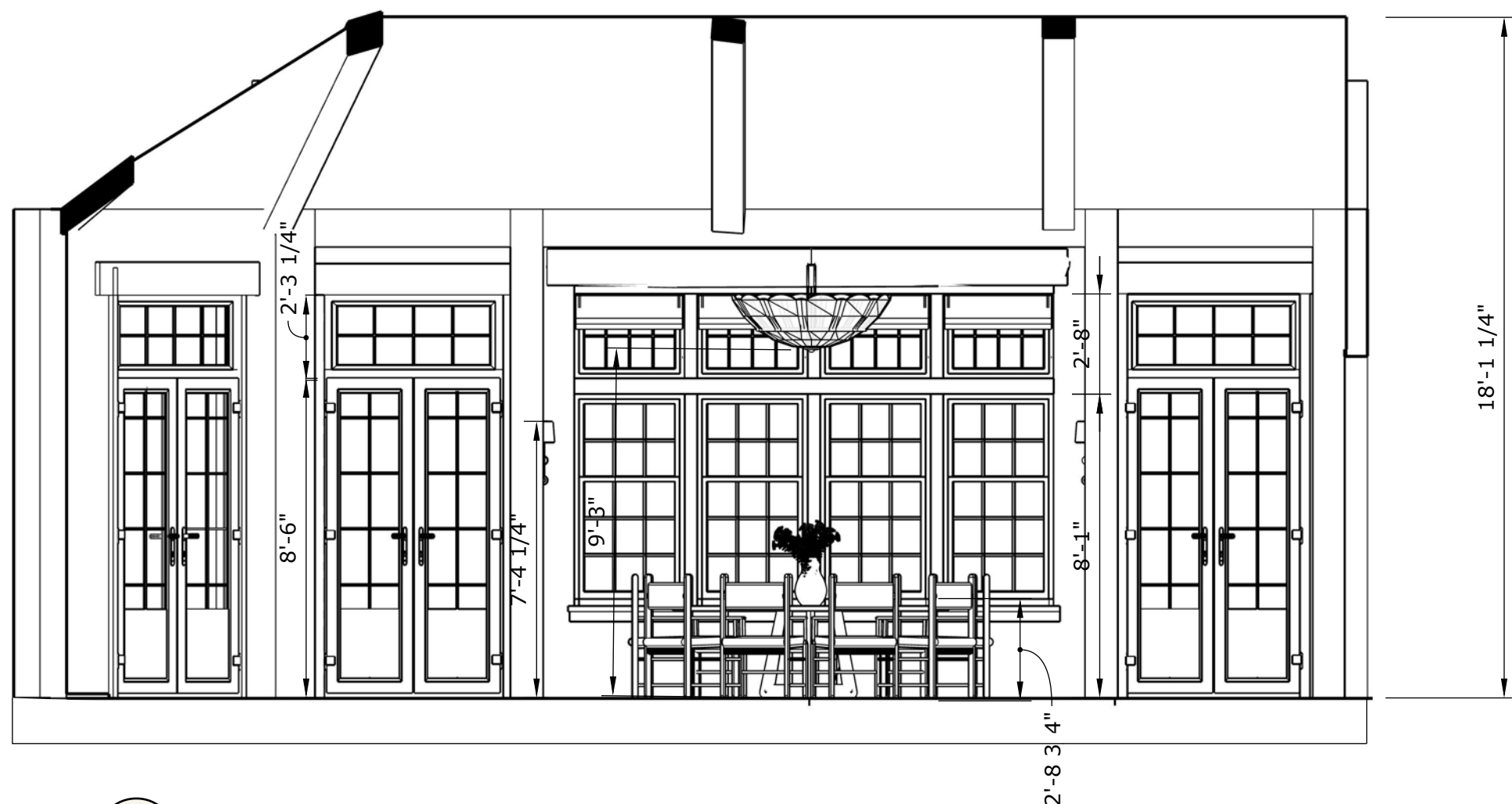
While the gathering spaces focus on mixed patterns and playful design, the study introduces a more masculine feel. The balance between traditional and modern elements is what makes the study design stand out: dark wood beadboard and painted navy blue wainscoting clad the walls, while modern furniture like the Marcel Breuer desk brings equilibrium. The fireplace tiles introduce pattern in a subtle way, complementing the calmer, darker color palette. The desk is placed strategically so Rocky can enjoy both the window view and the fireplace simultaneously. For reading by the warm fire, Lawson Fenning Ojai chairs upholstered in Jeffrey Pair's Deja Moo leather sit nearby. The Breuer desk is paired with a Gregorius Pineo Dordogne chair in dark Basque and a Porta Romana Marlowe table lamp. By the window sits the Selina table from Porta Romana, topped with a vase and a large architectural branch. Overall, the study is a space for Rocky to work, reflect, and rest.







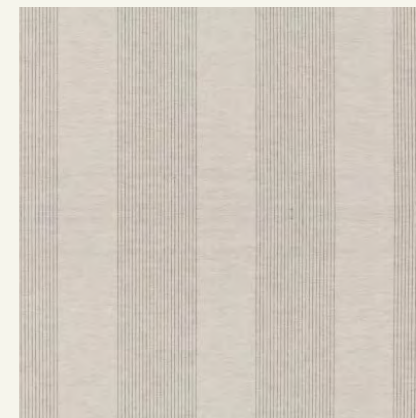
DINING PLAN
SCALE: 1/4" = 1'



DINING ELEVATION
SCALE: 1/4" = 1'



1.
ROMAN CURTAINS
CLARENCE HOUSE
OLIVIA - INDIGO



2.
CEILING WALL PAPER
PIERRE FREY
JACARANDA - BEIGE



3.
WALL SCONCE
PORTA ROMANA
CRAWFORD

FINISHES
OLD RUST
BASKET SHADE (CUSTOM)



3.
GEORG JENSEN
BLOOM VASE



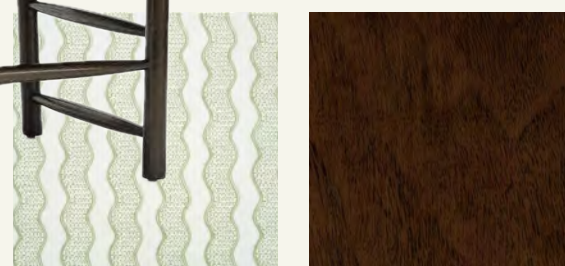
4.
CUSTOM DINING TABLE
GREGORIOUS PINEO
HANSEN TABLE

FINISHES
CRACKLED LAQUER
CHELSEA RED

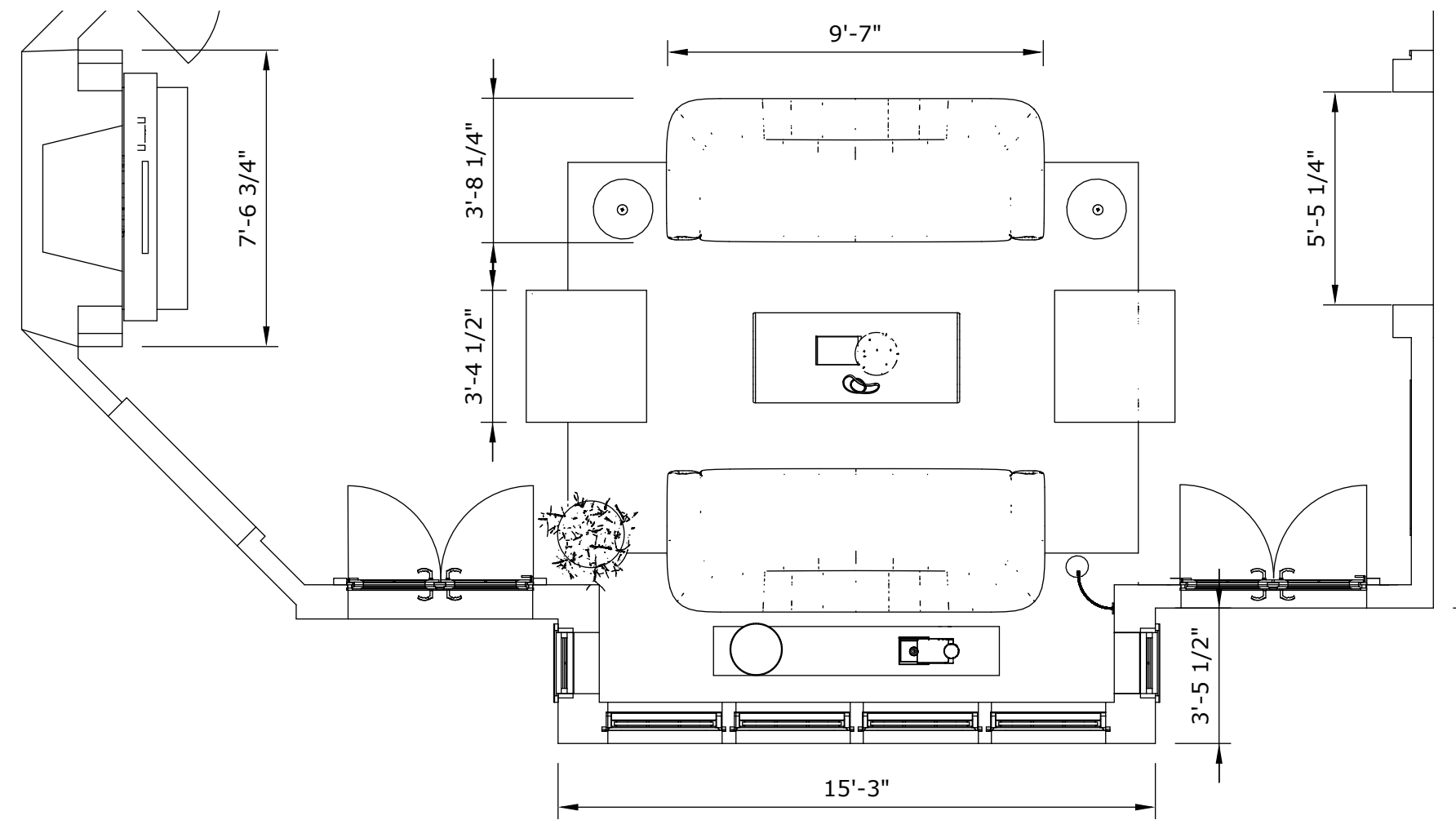


5.
DINING CHAIRS
GREGORIOUS PINEO
CHISWICK LOWBACK
DARK BASQUE

CHAIR FABRIC
JIM THOMPSON
GAMBOL - LEAF







LIVING ROOM PLAN
SCALE: 1/4" = 1'



LIVING ROOM ELEVATION
SCALE: 1/4" = 1'

4. **SOFA**
LAWSON FENNING
BURITI SOFA - COM

FABRIC
ZAK AND FOX
SOMMAR -
No. ZFSOMOP-05



8. **RUG**
ZAK AND FOX
BISCOTTI -
No. ZFBSCRK-03

5. **LOUNGE CHAIR**
LAWSON FENNING
SAN RAFAEL - COM

FABRIC
ZAK AND FOX
BARATILLO -
No. ZFBT-01



9. **ROMAN SHADE FABRIC**
CLARENCE HOUSE
BOTEH - PAPRIKA

6. **COFFEE TABLE**
PIERRE FREY - MILO
OAK, SMOKY (M)



10. **PAINTING**
BRITANY FERNS
FISH 8

7. **SIDE TABLE**
GREGORIUS PINEO - ARP
OAK, DESERT MOJAVE



11. **TAPESTRY**
EVELYN ACKERMAN
VINTAGE



12. **MANTEL SCULPTURE**
AUDE HERLEDAN
CUSTOM PIECE



1. **CHANDELIER**
HILLIARD - VENETIAN
ANTIQUE BRONZE



2. **TABLE LAMP**
PORTA ROMANA - RIDLEY
FLINT WHITE



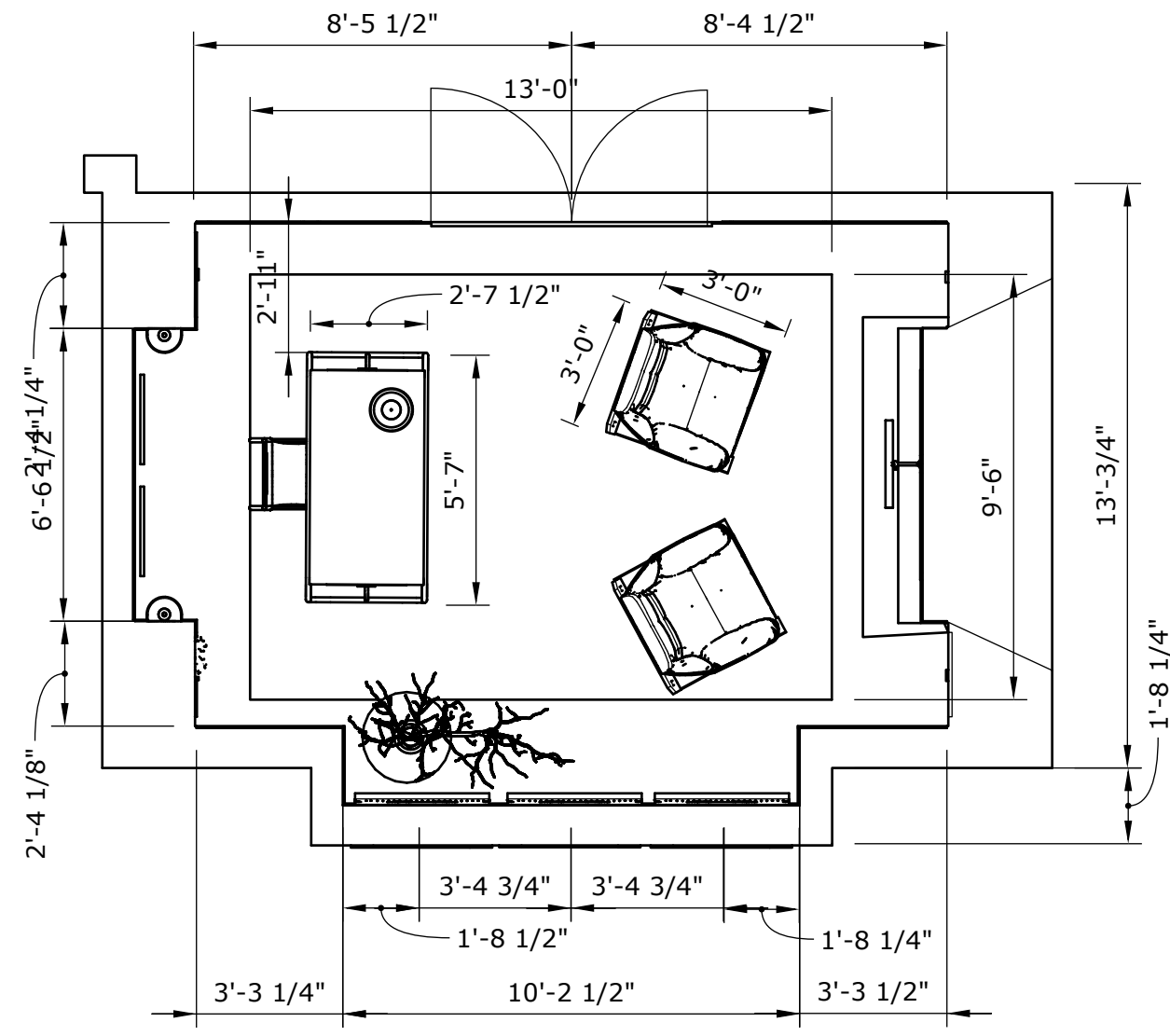
3. **CONSOLE TABLE**
IRONIES - VENETIAN



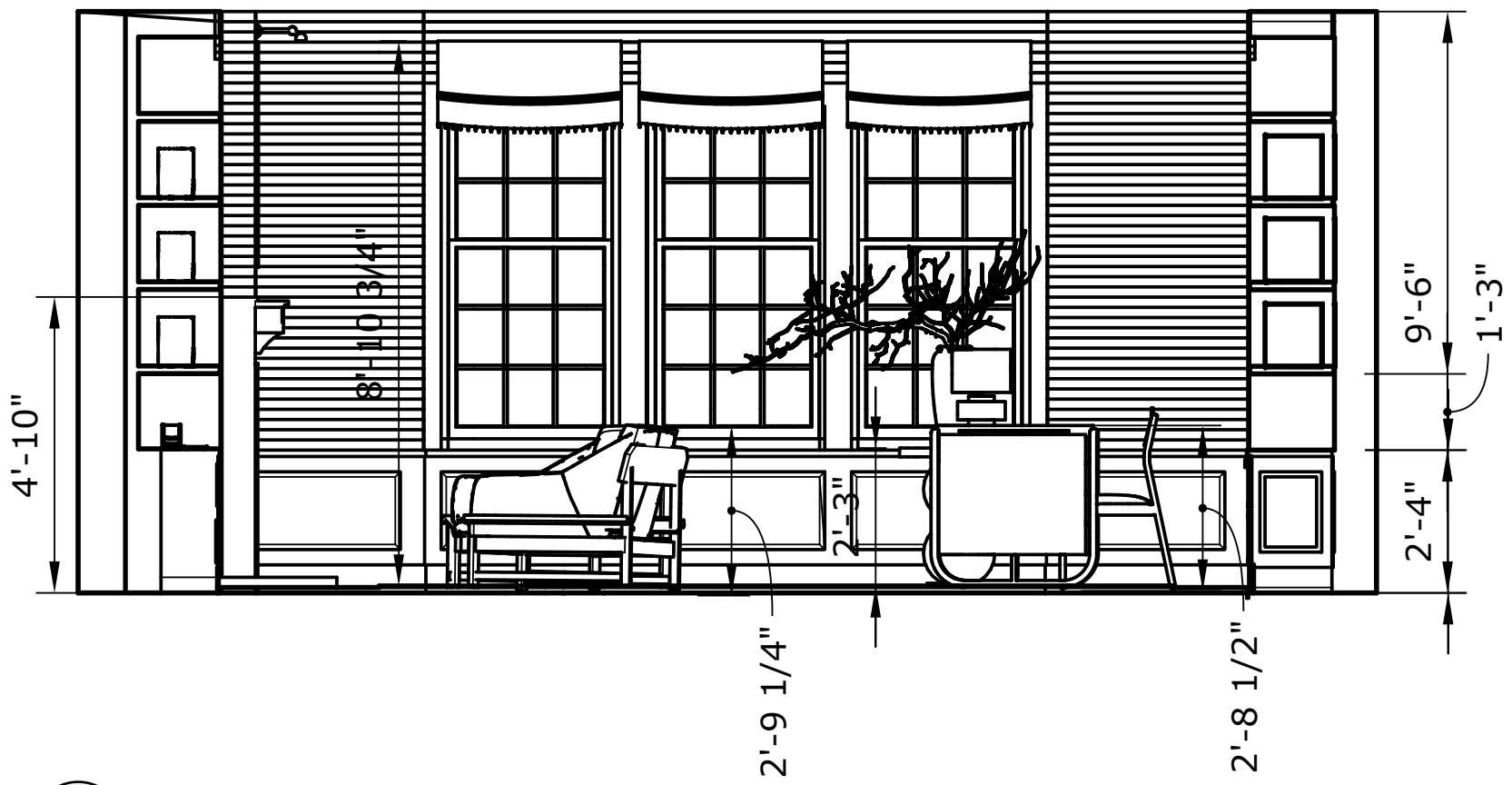




Study Plan & Elevation



STUDY PLAN
SCALE: 3/16" = 1'



STUDY ELEVATION
SCALE: 1/4" = 1'



- 1. WALL SCONCE**
PORTA ROMANA - BRONTE
PLASTER WHITE
 - 2. TABLE LAMP**
PORTA ROMANA - MARLOWE MINI
BURNT OCHRE - NATURAL LINEN
 - 3. DESK CHAIR**
GREGORIUS PINEO - DORDOGNE
DARK BASQUE
 - 4. DESK**
MARCEL BREUER - VINTAGE
 - 5. SIDE TABLE**
PORTA ROMANA - SELINA
PLASTER WHITE
 - 6. LOUNGE CHAIRS**
LAWSON FENNING - OJAI
COM
- CHAIR FABRIC**
JERRY PAIR LEATHER
DEJA MOO - ONYX



7. FIREPLACE PAINTING
RUBINS J. SPAANS
1ST DIBS



8. LITHOGRAPHS
MARY FAULCONER
PEACE & PLENTY FOLK ART
1ST DIBS



9. ROMAN SHADE FABRIC
SEAN LEFFERS
CALCATA VECCHIA - RED

