



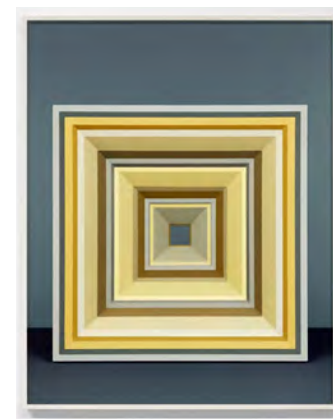
Midwest Lake Home *for* Rocky LaFleur

BY PORTIA WELLS

*Kneedler Fauchère's
4th Annual Rocky LaFleur Scholarship Fund
Student Competition | 2025*

portia@portiawells.com

Design Board



Rocky's Lakehouse

ROCKY LAFLEUR WAS AN ETERNAL CONNECTOR WHOSE CHARM, WIT, AND ABILITY TO FORGE MEANINGFUL FRIENDSHIPS TOUCHED EVERYONE HE MET.

It was a joy to learn about his ever-present smile and the generosity with which he shared his time and insight with others. For Rocky, design was about soul and storytelling; his work was about building community. For the Midwest Lakehouse, I envisioned a space that tells his story and welcomes his community. Both a gathering place within the sweeping Midwestern landscape where he grew up and a grand lakehouse that feels both intimate and expansive—like Rocky.

THE PASQUE FLOWER

The heart of the design draws from the Pasque Flower, South Dakota's state flower. It's a modest, fuzzy bloom that pushes through the gray, still-sleeping earth in early spring. The flower comes in many colors, though purple is most common across the South Dakota plains, where Rocky was born. The plant is wrapped in soft, wispy hairs, creating a fuzzy halo, while its floral interior is silky and accented with bright golden-yellow stamens.

Building on this inspiration from Rocky's youth, I envisioned him as a young person on the South Dakota plains, spotting the purple blossoms dotting the muted, rolling terrain. The visual contrast of lavender on gray formed the foundation for the color palette and overall aesthetic of the lakehouse.

GATHERING ROOM

Transitioning into the Gathering Room, when you enter from the Hall, you're surrounded by tall gray-washed wood walls and floors, echoing the quiet plains of Rocky's childhood. A low Pierre Frey *Marta* bench in Nobilis *Nymphaea* fabric sits under the shiny Ironies Walensee console, which has a painted wood-like finish. Two brass Caste *Loma* lamps stand on either side of the console, framing the view of the large stone fireplace, where *Mouvement* by Aude Herlédan stands out in bright white enamel, adding a playful, futuristic mid-century touch. The piece gently mimics the stone of the fireplace.

A conversation zone features two BDDW *Petite Abel Club Chairs* in Zak & Fox upholstery, with armrests decorated in *Indigo Leather Key Tassels*; it is complemented by a small Pierre Frey *Mirage* glass table. Opposite, a pair of Pierre Frey *Virgule* sofas in Dedar's soft, gray-patterned velvet, *Nenufar*, evoke the fuzz of the Pasque Flower and the movement of aquatic flora. Between the *Virgule* sofas, a sofa console table is topped with Hilliard *Acorn* lamps. Small drink tables, including a Stahl & Band *Drive Side Table* and a B. Zippy ceramic table in dappled purple, encouraging lingering conversation.

A second gathering area is defined by a brown Pierre Frey *Dapian* rug. A Pierre Frey *Patt Sofa* in pearlescent lavender *Nacre De Tours* fabric anchors the space. Flanking a low live-edge maple coffee table from Fern, Nobilis fawn-inspired upholstery wraps Gregorius Pineo armchairs; they pair with a

sinuous marble and brass Caste side table. The vignette is completed with yellow Caste *Volt* stools (a nod to the flower's golden stamens) and a simple Holly Hunt *Martini* pedestal table.

In an alcove off the main seating area, a reflective sideboard by Rem Atelier glimmers like sunlight on water, while Georges Pelletier *Sun Lamps* bring warmth year-round. Neighboring, *Where Am I?* by Marie-Amelie (Holly Hunt) balances the built-in bar across the Hall; its pearly radiance mimics the water. The lightness of the painting is tempered by a raw *Pengo* side table. Two vintage Polycandelon Cha Villa Kerylos-style chandeliers fill the double-height ceilings, bringing warmth with their alabaster cups. The furniture layout fosters symmetry and multiple conversation zones while preserving sightlines to the dining table and outdoor lakefront patio, reflecting Rocky's love of connection and community.

DINING ALCOVE

The Dining Alcove seats ten Holly Hunt Vladimir Kagan First Chairs, customized in walnut wood with indigo Jerry Pair leather. A black Fern dining table holds Holly Hunt pink and lavender Urban Eclectic glass vases. Green vintage Directoire pendant lights reflect the lake and surrounding foliage, while the metallic, crocheted Dedar Argento Vivo Roman Shades decorate the windows, allowing light and lake views. A Caste Beauvais console in dusty blue-lavender ties the palette back to the Gathering Room; on top, sit Holly Hunt Candlesticks. High on the wall, a whimsical owl sculpture by David Wiseman adds a charming, tucked-away presence, reflecting the Lakehouse's connection to nature.



STUDY

The year 1978 marked an important moment in Rocky's life. Moving to Los Angeles, he embraced the city with small-town generosity, forging connections and growing personally and professionally. The Study reflects that period—an earthy, contemplative sanctuary inspired by 1970s California, rich with texture and natural elements.

Walls are wrapped in Clarence House's shimmering brown *Marquerite* floral wall-covering; the wood work is gray-washed. Across from the fireplace, Pierre Augustin Rose's chunky *Atlas Desk* in travertine pairs with an Eames *Executive Chair* reupholstered in bold yellow Pierre Frey linen. Above, Cheryl Humpherys' *Gold Prism Study* provides a meditative focal point within its repeating squares. A nearby Pierre Frey *Chenille Dot* stool offers an extra perch. In front of the fireplace, a gray Jerry Pair leather-clad daybed from Studio Kuhlman offers rest and contemplation. A yellow Pierre Frey *Milo Pedestal* table topped with a driftwood lamp and Maria Kipp shade adds soft ambiance. The fireplace features a 1960s metal screen, and above, the *Geo*

Transition Mirror by Chen Chen & Kai Williams incorporates chunky stones and agates for texture. On the wall above the daybed, *La Jolla Fields* by Jame Kendall Higgins provides a soft focal point, with colors that echo the wallpaper.

A window seat with gray Pierre Frey *Pyla* Lin cushions is flanked by Porta Roma mushroom sconces, celebrating the lakehouse's natural elements and 1970s aesthetic. The yellow Nobilis *Egee* open-weave window covering adds subtle texture while highlighting the sculptural sconces. A simple Caste three-legged drink table provides flexible function, and the *Falcon Hanging Light* by Kristin Victoria Barron casts a unifying orange glow across the space. A soft *Fleece-Brown Rug* by Erden grounds the room underfoot.

“Interior design has always been and always will be about relationships.”

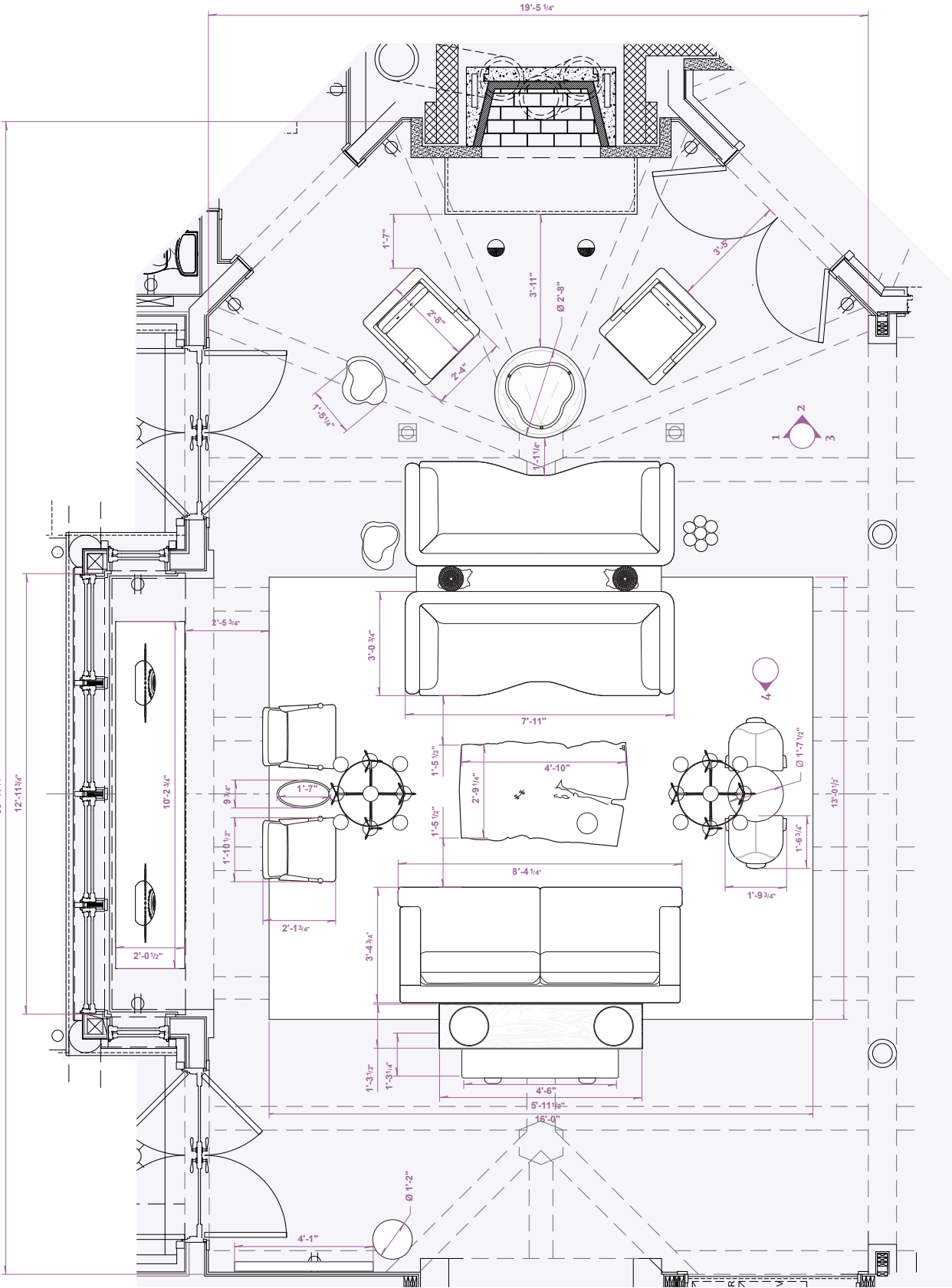
~ROCKY LAFLEUR

The Midwest Lakehouse is a timeless tribute to Rocky—generous, curious, and deeply connected. The Great Room and Dining Alcove celebrate the colors and textures of his home state. The Study reflects the curiosity, and the natural, 1970s-inspired surroundings that shaped his California years and the tribe he found there. Together, the spaces carry forward the essence of Rocky LaFleur's spirit and the enduring community he so cherished.

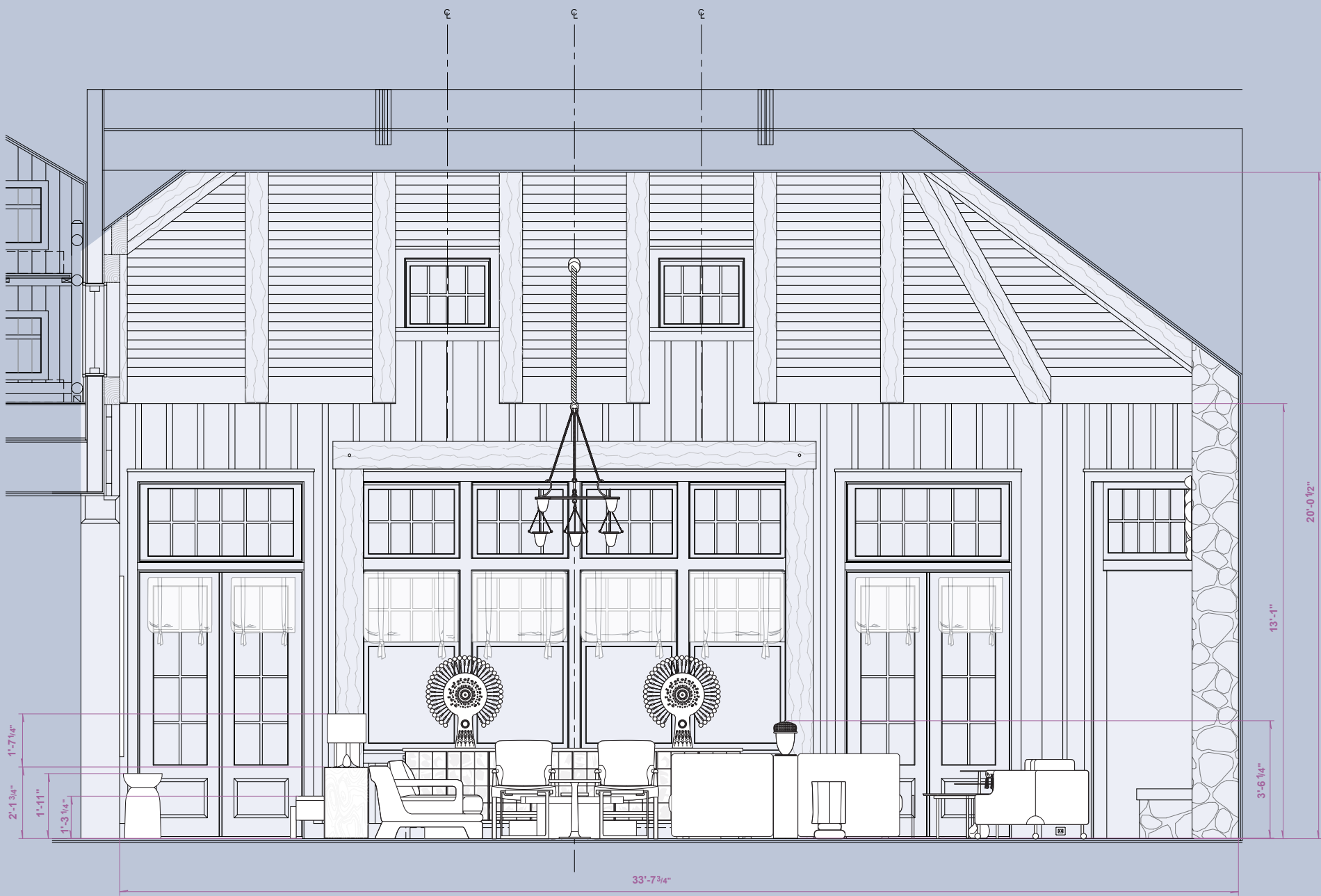
Gathering Room & Dining Alcove



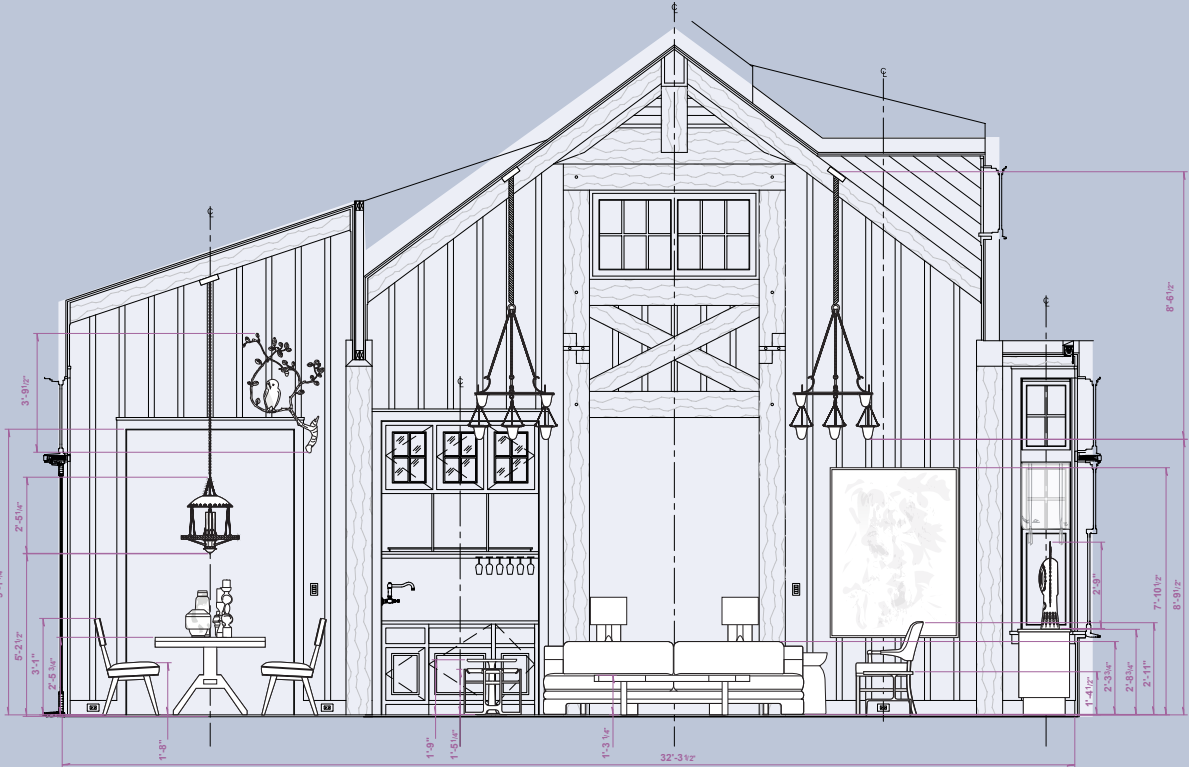
Gathering Room



Gathering Room



1 GREAT ROOM ELEVATION

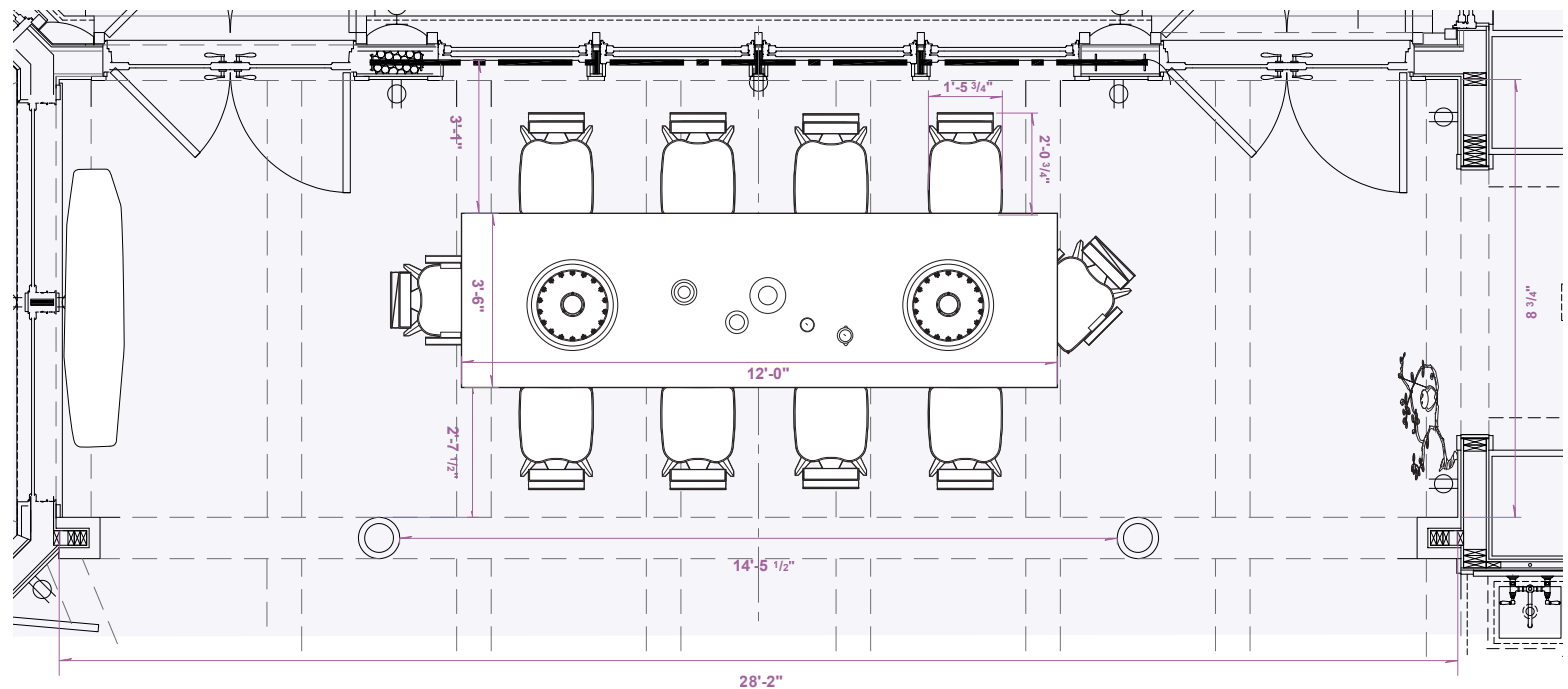


4 GREAT ROOM ELEVATION

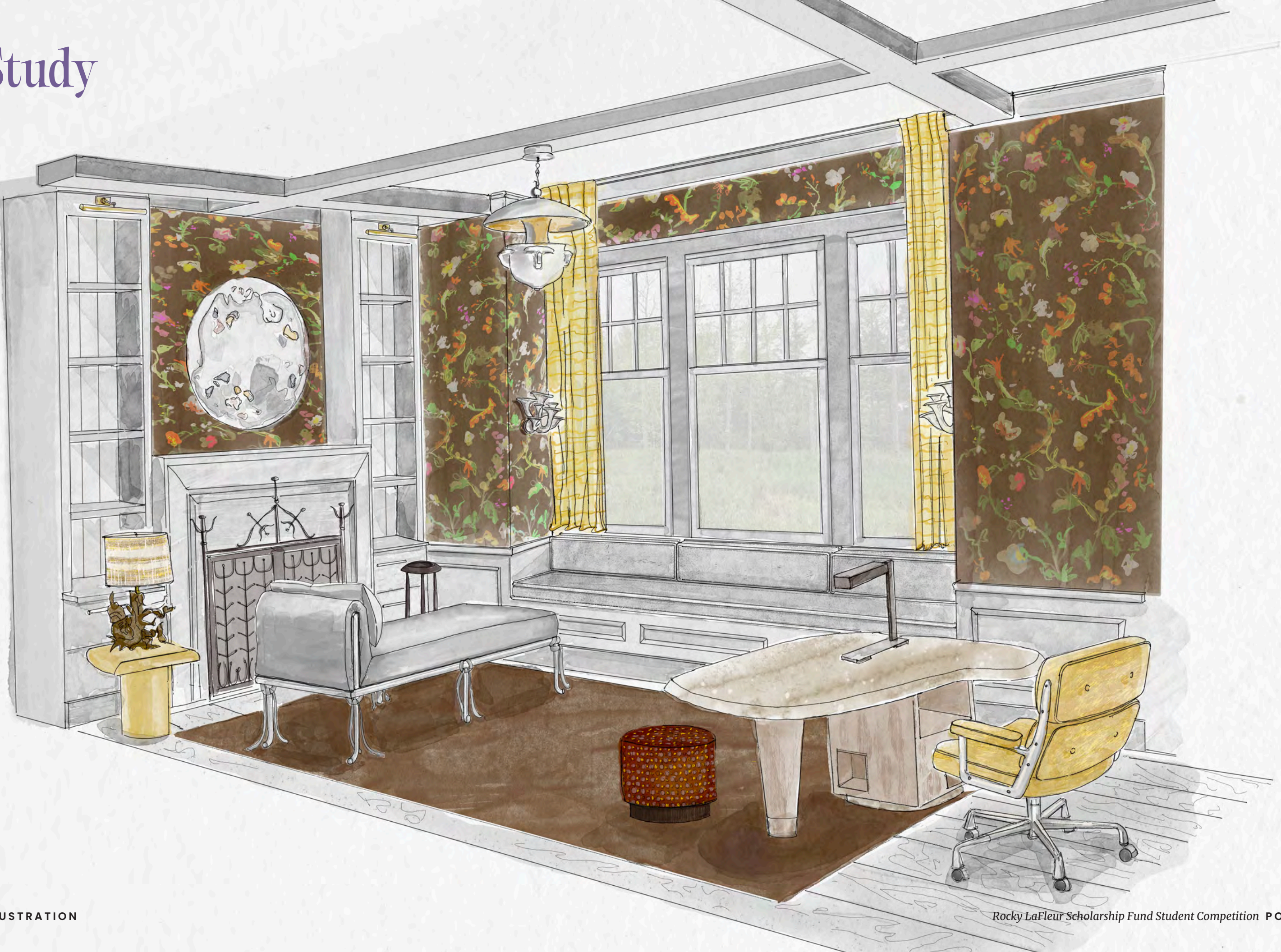


2 GREAT ROOM ELEVATION

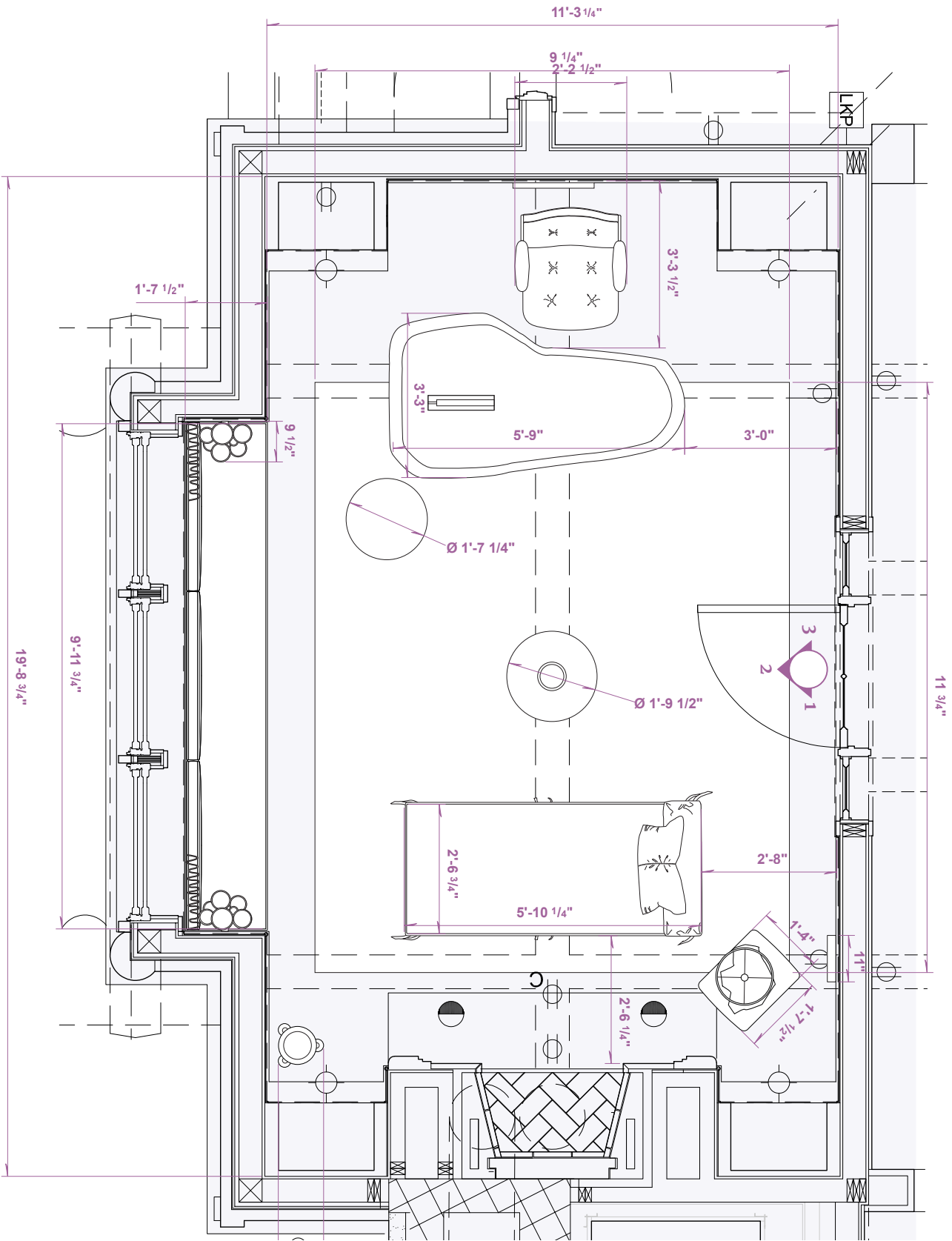
Dining Alcove



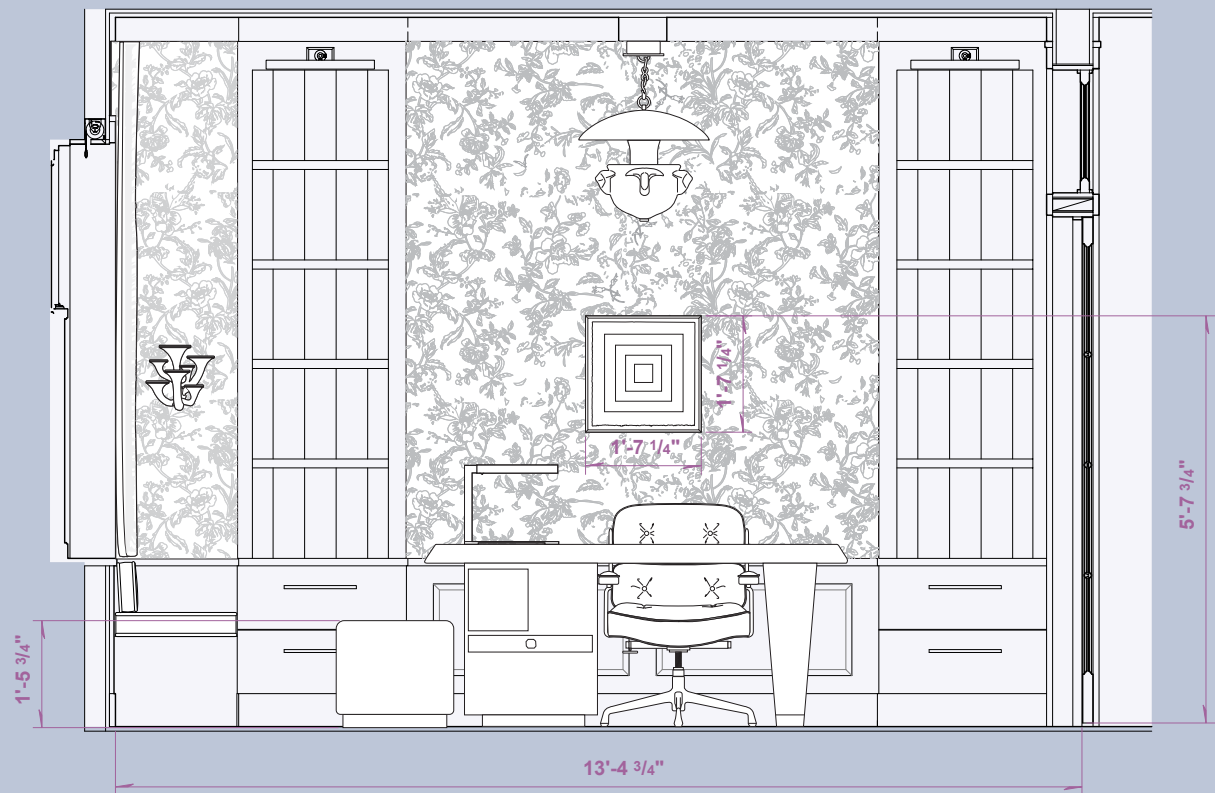
Study



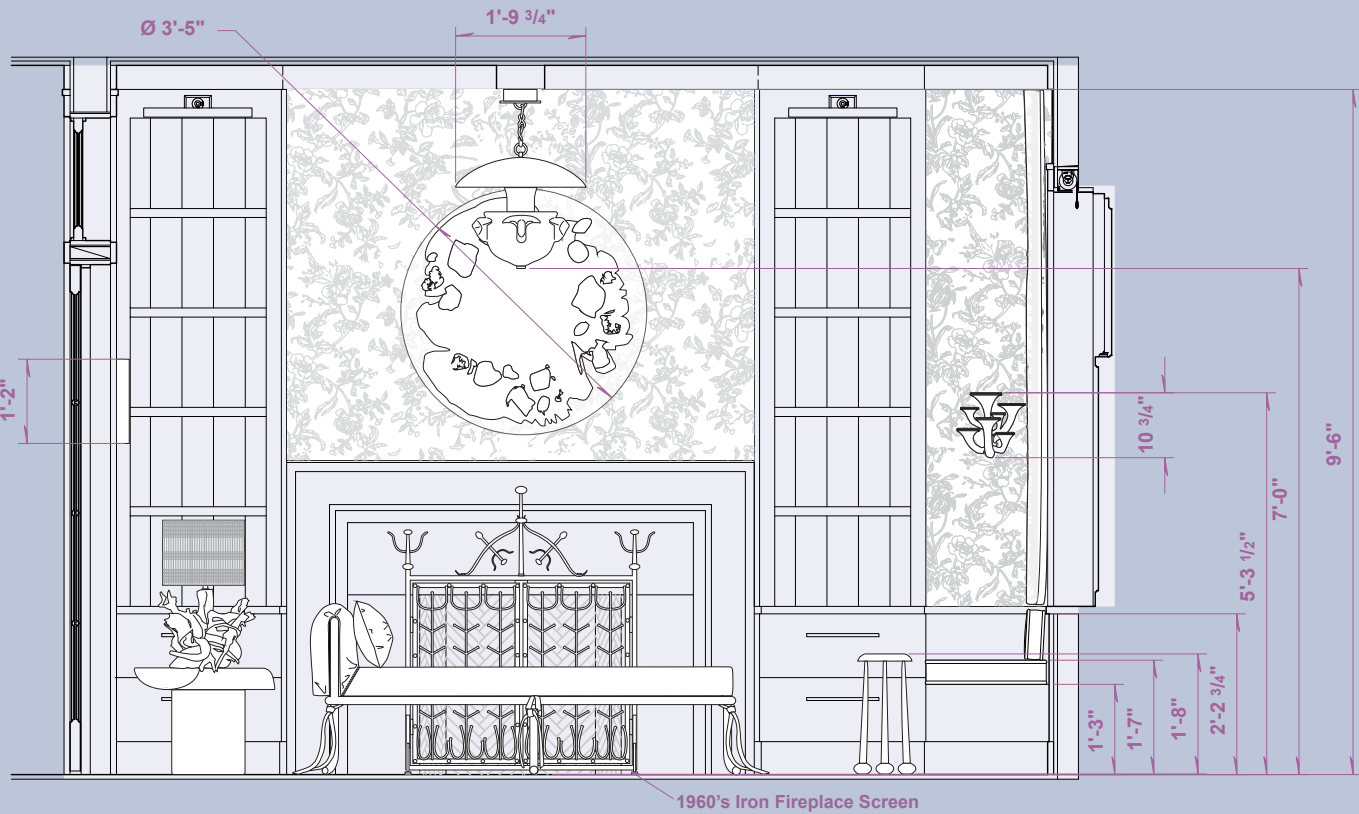
Study



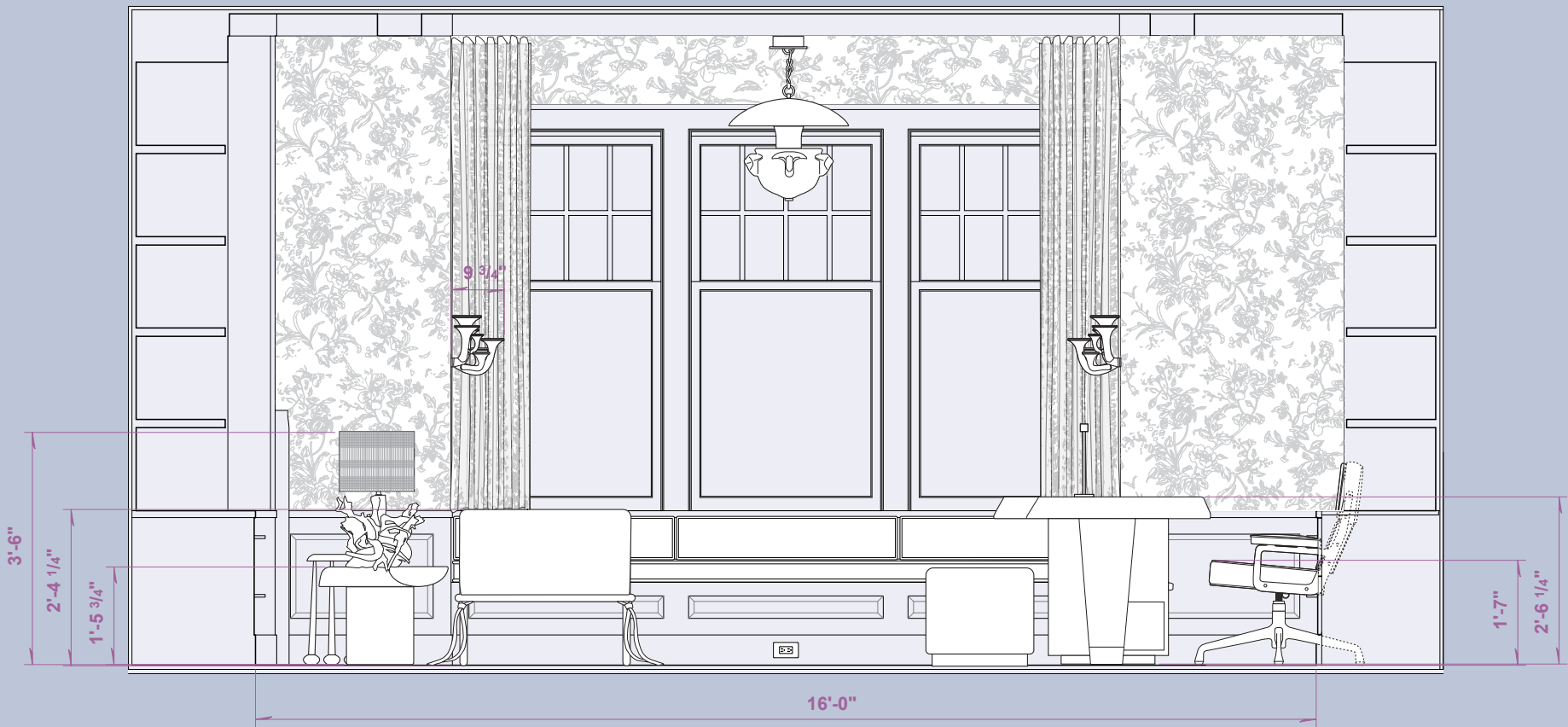
Study



3 STUDY ELEVATION



1 STUDY ELEVATION



2 STUDY ELEVATION